

Datasheet for ABIN6388025

**TINAGL1 Protein (AA 22-467) (His tag)**[Go to Product page](#)**1** Image

## Overview

Quantity:	50 µg
Target:	TINAGL1
Protein Characteristics:	AA 22-467
Origin:	Human
Source:	Baculovirus infected Insect Cells
Protein Type:	Recombinant
Purification tag / Conjugate:	This TINAGL1 protein is labelled with His tag.
Application:	SDS-PAGE (SDS)

## Product Details

Sequence:	ADLAQQGRGR RELAPGLHLR GIRDAGGRYC QEQLCCRGR ADDCALPYLG AICYCDLFCN RTVSDCCPDF WDFCLGVPPP FPPIQGCMHG GRIYPVLGTY WDNCNRCTCQ ENRQWQCDQE PCLVDPDIK AINQGNYGWQ AGNHSAFWGM TLDEGIRYRL GTIRPSSSVN NMHEIYTVLN PGEVLPTAFE ASEKWPNIH EPLDQGNACG SWAFSTAAVA SDRVSIHSLG HMPVLSLSPQN LLSCDTHQQQ GCRGGRLDGA WWFLRRRGVV SDHCYPFSGR ERDEAGPAPP CMMHSRAMGR GKRQATAHCP NSYVNNNDIY QVTPVYRLGS NDKEIMKELM ENGPVQALME VHEDFFLYKG GIYSHTPVSL GRPERYRRHG THSVKITGWG EETLPDGRTL KYWTAANSWG PAWGERGHFR IVRGVNECDI ESFVLGVWGR VGMEDMGHHH HHHHH
Purity:	> 90 % by SDS - PAGE
Endotoxin Level:	< 1.0 EU per 1 microgram of protein (determined by LAL method)

## Target Details

---

Target:	TINAGL1
Alternative Name:	TINAGL1 ( <a href="#">TINAGL1 Products</a> )
Background:	TINAGL1, also known as tubulointerstitial nephritis antigen-like isoform 1, is a glycoprotein member of the peptidase C1 family of molecules. During pregnancy it binds to Laminin-1 and Integrins alpha 5 and beta 1 and plays a role in supporting fertility. In the vasculature, TINAGL1 localizes to basal laminae along adrenocortical sinusoidal capillaries where it binds to fibronectin and collagen and supports adrenocortical cell adhesion. Recombinant human TINAGL1 protein, fused to His-tag at C-terminus, was expressed in insect cell and purified by using conventional chromatography techniques.
Molecular Weight:	51.2kDa (455aa) 50-70KDa (SDS-PAGE under reducing conditions.)
NCBI Accession:	<a href="#">NP_071447</a>
UniProt:	<a href="#">Q9GZM7</a>

## Application Details

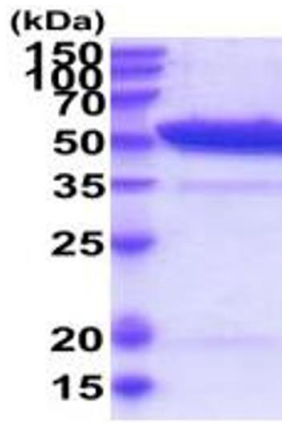
---

Application Notes:	Optimal working dilution should be determined by the investigator.
Restrictions:	For Research Use only

## Handling

---

Format:	Liquid
Concentration:	0.25 mg/mL
Buffer:	Liquid. In Phosphate Buffered Saline ( pH 7.4) containing 30 % glycerol, 1 mM DTT.
Storage:	4 °C,-20 °C,-80 °C
Storage Comment:	Can be stored at +4C short term (1-2 weeks). For long term storage, aliquot and store at -20C or -70C. Avoid repeated freezing and thawing cycles.



15% SDS-PAGE (3ug)

**SDS-PAGE**

Image 1.