

Datasheet for ABIN6388049

KLRC1 Protein (AA 94-233) (His tag)[Go to Product page](#)**1** Image

Overview

Quantity:	50 µg
Target:	KLRC1
Protein Characteristics:	AA 94-233
Origin:	Human
Source:	Baculovirus infected Insect Cells
Protein Type:	Recombinant
Purification tag / Conjugate:	This KLRC1 protein is labelled with His tag.
Application:	SDS-PAGE (SDS)

Product Details

Sequence:	ADPPSTLIQR HNNSSLNTRT QKARHCGHCP EEWITYSNSC YYIGKERRTW EESLLACTSK NSSLLSIDNE EEMKFLSIIS PSSWIGVFRN SSHHPWVTMN GLAFKHEIKD SDNAELNCAV LQVNRLKSAQ CGSSIIYHCK HKLHHHHHHH
Purity:	> 90 % by SDS - PAGE
Endotoxin Level:	< 1.0 EU per 1ug of protein (determined by LAL method)

Target Details

Target:	KLRC1
Alternative Name:	KLRC1 (KLRC1 Products)
Background:	KLRC1, also known as NKG2-A/NKG2-B type II integral membrane protein isoform NKG2-A, is a member of the killer cell lectin-like receptor family. It associates with CD94 and is expressed on

Target Details

NK cells and some activated T cell populations. This protein functions as a receptor for the recognition of MHC class I HLA-E molecules by NK cells and some cytotoxic T-cells.
Recombinant human KLRC1 protein, fused to His-tag at C-terminus, was expressed in insect cell and purified by using conventional chromatography techniques.

Molecular Weight: 17.1kDa (149aa) 18-28kDa (SDS-PAGE under reducing conditions.)

NCBI Accession: [NP_998823](#)

UniProt: [P26715](#)

Application Details

Application Notes: Optimal working dilution should be determined by the investigator.

Restrictions: For Research Use only

Handling

Format: Liquid

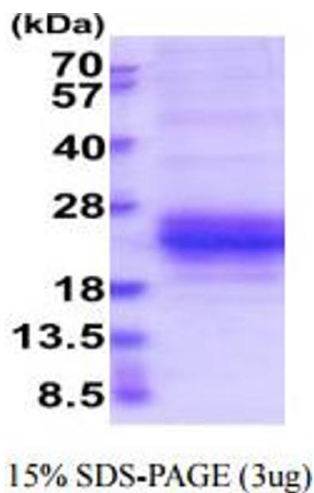
Concentration: 0.25 mg/mL

Buffer: Liquid. In Phosphate Buffered Saline (pH 7.4) containing 10 % glycerol.

Storage: 4 °C,-20 °C,-80 °C

Storage Comment: Can be stored at +4C short term (1-2 weeks). For long term storage, aliquot and store at -20C or -70C. Avoid repeated freezing and thawing cycles.

Images



SDS-PAGE

Image 1.