



[Go to Product page](#)

Datasheet for ABIN6388106  
**BIN2 Protein (AA 1-597) (His tag)**

1 Image

Overview

Quantity:	50 µg
Target:	BIN2
Protein Characteristics:	AA 1-597
Origin:	Human
Source:	Baculovirus infected Insect Cells
Protein Type:	Recombinant
Purification tag / Conjugate:	This BIN2 protein is labelled with His tag.
Application:	SDS-PAGE (SDS)

Product Details

Sequence:	ADPMRGMPGA RTSSSGASEN HRARGQGGGP QGVGRMAEGK AGGAAGLFAK QVQKKFSRAQ EKVLQKLGKA VETKDERFEQ SASNFYQQA EGHKLYKDLK NFLSAVKVMH ESSKRVSETL QEIYSSEWDG HEELKAIWN NDLLWEDYEE KLADQAVRTM EIYVAQFSEI KERIAKRGRK LVDYDSARHH LEAVQNAKKK DEAKTAKAEE EFNKAQTVFE DLNQELLEEL PILYNSRIGC YVTIFQNISN LRDVFYREMS KLNHNLYEVM SKLEKQHSNK VFVVKGLSSS SRRSLVISPP VRTATVSSPL TSPTSPSTLS LKSESESVSA TEDLAPDAAQ GEDNSEIKEL LEEEEIEKEG SEASSSEEDE PLPACNGPAQ AQPSPPTTERRA KSQEEVLPSS TTPSPGGALS PSGQPSSSAT EVLRLRRTAS EGSEQPKKRA SIQRTSAPPS RPPPPRATAS PRPSSGNIPS SPTASGGGSP TSPRASLGTG TASPRTSLEV SPNPEPPEKP VRTPEAKENE NIHNQNPEEL CTSPTLMTSQ VASEPGEAKK MEDKEKDNKL ISANSSEGQD QLQVSMVPEN NNLTAPEPQE EVSTSENPQL HHHHHH
Purity:	> 80 % by SDS - PAGE

## Product Details

---

Endotoxin Level: < 1.0 EU per 1ug of protein (determined by LAL method)

## Target Details

---

Target: BIN2

Alternative Name: BIN2 ([BIN2 Products](#))

Background: BIN2, also known as bridging integrator 2 isoform1, is a cytoplasmic protein. It contains one BAR domain and Interacts with BIN1. This protein is highly expressed in some hematopoietic tissues, including peripheral blood, thymus, colon and placenta. It Promotes cell motility and migration, probably via its interaction with the cell membrane and with podosome proteins that mediate interaction with the cytoskeleton and also modulates membrane curvature and mediates membrane tubulation. Recombinant human BIN2 protein, fused to His-tag at C-terminus, was expressed in insect cell and purified by using conventional chromatography techniques.

Molecular Weight: 66.1kDa (606aa) 70-100KDa (SDS-PAGE under reducing conditions.)

NCBI Accession: [NP\\_057377](#)

UniProt: [Q9UBW5](#)

## Application Details

---

Application Notes: Optimal working dilution should be determined by the investigator.

Restrictions: For Research Use only

## Handling

---

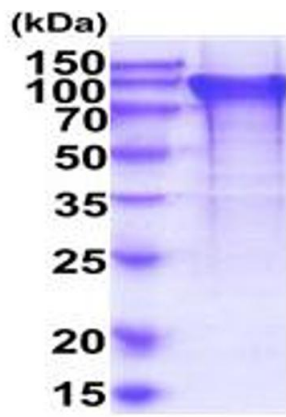
Format: Liquid

Concentration: 0.25 mg/mL

Buffer: Liquid. In Phosphate Buffered Saline ( pH 7.4) containing 20 % glycerol, 1 mM DTT, 0.1 mM PMSF.

Storage: 4 °C,-20 °C,-80 °C

Storage Comment: Can be stored at +4C short term (1-2 weeks). For long term storage, aliquot and store at -20C or -70C. Avoid repeated freezing and thawing cycles.



15% SDS-PAGE (3ug)

### SDS-PAGE

Image 1.