

Datasheet for ABIN6388166

## CD20 Protein (AA 210-297) (His tag)



[Go to Product page](#)

### 1 Image

#### Overview

|                               |   |
|-------------------------------|---|
| Quantity:                     | 50 µg                                       |
| Target:                       | CD20 (MS4A1)                                |
| Protein Characteristics:      | AA 210-297                                  |
| Origin:                       | Human                                       |
| Source:                       | Baculovirus infected Insect Cells           |
| Protein Type:                 | Recombinant                                 |
| Purification tag / Conjugate: | This CD20 protein is labelled with His tag. |
| Application:                  | SDS-PAGE (SDS)                              |

#### Product Details

|                  |  |
|------------------|--|
| Sequence:        | GIVENEW KRTCSPKSN IVLLSAEEKK EQTIEIKEEV VGLTETSSQP KNEEDIEIIP IQEEEEETE<br>TNFPEPPQDQ ESSPIENDSS P |
| Purity:          | > 90% by SDS-PAGE  |
| Endotoxin Level: | < 1 EU per 1 µg of protein (determined by LAL method)  |

#### Target Details

|                   |  |
|-------------------|--|
| Target:           | CD20 (MS4A1)   |
| Alternative Name: | MS4A1/CD20 ( <a href="#">MS4A1 Products</a> )  |
| Background:       | MS4A1, also known as B-lymphocyte antigen CD20, is an activated-glycosylated phosphoprotein expressed on the surface of all B-cells beginning at the pro-B phase and progressively increasing in concentration until maturity. It is to enable optimal B-cell immune |

## Target Details

response, specifically against T-independent antigens. It is suspected that it acts as a calcium channel in the cell membrane. It plays a role in the microenvironmental interactions of B cells. This structurally unique phosphoprotein plays a role in the regulation of human B cell proliferation and differentiation. It was strongly phosphorylated on resting B cells after CDw40 stimulation, suggesting that it may be functionally regulated by a protein kinase. Recombinant human MS4A1, fused to His-tag at C-terminus, was expressed in insect cell and purified by using conventional chromatography techniques.

Molecular Weight: 11.1 kDa (97aa)

NCBI Accession: [NP\\_068769](#)

UniProt: [P11836](#)

## Application Details

Application Notes: Optimal working dilution should be determined by the investigator.

Restrictions: For Research Use only

## Handling

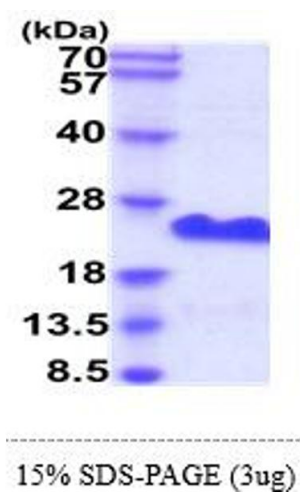
Format: Liquid

Concentration: 0.5 mg/mL

Buffer: Liquid. In Phosphate Buffered Saline ( pH 7.4) containing 10 % glycerol.

Storage: 4 °C,-20 °C,-80 °C

Storage Comment: Can be stored at +2°C to +8°C for 1 week. For long term storage, aliquot and store at -20°C to -80°C. Avoid repeated freezing and thawing cycles.



SDS-PAGE

Image 1.