

Datasheet for ABIN6388272

Poliovirus Receptor Protein (PVR) (AA 28-343) (His tag)[Go to Product page](#)**3** Images

Overview

Quantity:	100 µg
Target:	Poliovirus Receptor (PVR)
Protein Characteristics:	AA 28-343
Origin:	Rhesus Monkey
Source:	HEK-293 Cells
Protein Type:	Recombinant
Biological Activity:	Active
Purification tag / Conjugate:	This Poliovirus Receptor protein is labelled with His tag.

Product Details

Sequence:	AA 28-343
Purity:	>90 % as determined by SDS-PAGE.
Endotoxin Level:	Less than 1.0 EU per µg by the LAL method.

Target Details

Target:	Poliovirus Receptor (PVR)
Alternative Name:	CD155 (PVR Products)
Background:	CD155 (cluster of differentiation 155) also known as the poliovirus receptor is a protein that is encoded by the PVR gene. CD155 is a Type I transmembrane glycoprotein in the immunoglobulin superfamily. Commonly known as Poliovirus Receptor (PVR) due to its involvement in the cellular poliovirus infection in primates, CD155's normal cellular function is in

Target Details

the establishment of intercellular adherens junctions between epithelial cells. The role of CD155 in the immune system is unclear, though it may be involved in intestinal humoral immune responses. Subsequent data has also suggested that CD155 may also be used to positively select MHC-independent T cells in the thymus.

Molecular Weight:	36.3 kDa
NCBI Accession:	NP_001036851
Pathways:	Regulation of Leukocyte Mediated Immunity , Positive Regulation of Immune Effector Process , Cell-Cell Junction Organization , Cancer Immune Checkpoints , SARS-CoV-2 Protein Interactome

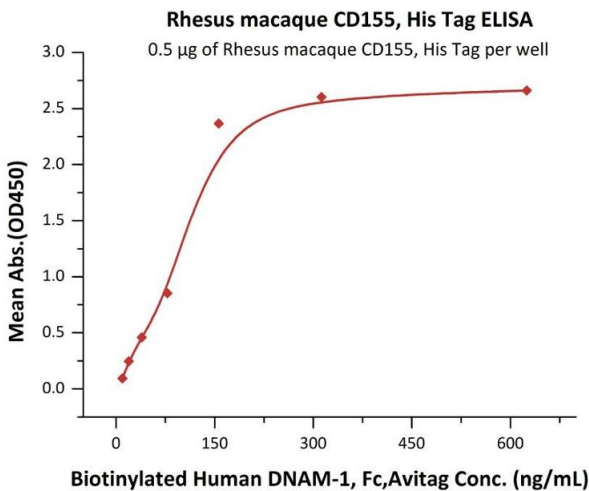
Application Details

Restrictions:	For Research Use only
---------------	-----------------------

Handling

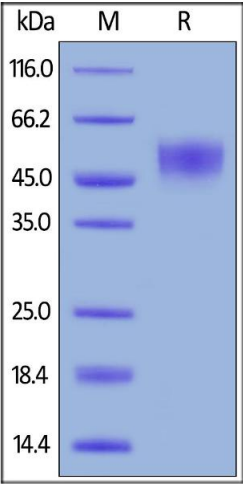
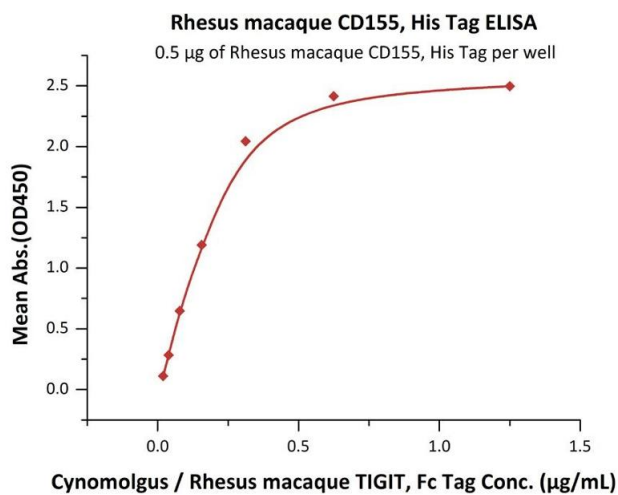
Format:	Lyophilized
Buffer:	PBS, pH 7.4
Handling Advice:	Please avoid repeated freeze-thaw cycles.
Storage:	-20 °C

Images



ELISA

Image 1. Immobilized Rhesus macaque CD155, His Tag (ABIN6386414,ABIN6388272) at 5 µg/mL (100 µL/well) can bind Biotinylated Human DNAM-1, Fc,Avitag (ABIN4949019,ABIN4949020) with a linear range of 10-156 ng/mL (Routinely tested).



ELISA

Image 2. Immobilized Rhesus macaque CD155, His Tag (ABIN6386414,ABIN6388272) at 5 µg/mL (100 µL/well) can bind Cynomolgus / Rhesus macaque TIGIT, Fc Tag (ABIN4949061,ABIN4949062) with a linear range of 0.02-0.313 µg/mL (QC tested).

SDS-PAGE

Image 3. Rhesus macaque CD155, His Tag on under reducing (R) condition. The gel was stained overnight with Coomassie Blue. The purity of the protein is greater than 90 % .