

Datasheet for ABIN6388278

CTGF Protein (AA 26-348) (His tag)[Go to Product page](#)**2** Images

Overview

Quantity:	100 µg
Target:	CTGF
Protein Characteristics:	AA 26-348
Origin:	Mouse
Source:	HEK-293 Cells
Protein Type:	Recombinant
Purification tag / Conjugate:	This CTGF protein is labelled with His tag.

Product Details

Sequence:	AA 26-348
Purity:	>90 % as determined by SDS-PAGE.
Endotoxin Level:	Less than 1.0 EU per µg by the LAL method.

Target Details

Target:	CTGF
Alternative Name:	CTGF (CTGF Products)
Background:	Connective Tissue Growth Factor (CTGF), also known as CCN2, is a member of the CCN (CCN1-6) family of modular matricellular proteins. Like other CCN proteins, mature human CTGF consists of IGF-binding protein domain, a vWF-C domain, a TSP-1 domain, and a cysteine knot heparin-binding domain. CTGF promotes proliferation and differentiation of chondrocytes. Mediates heparin- and divalent cation-dependent cell adhesion in many cell types including

Target Details

fibroblasts, myofibroblasts, endothelial and epithelial cells. Enhances fibroblast growth factor-induced DNA synthesis. Analysis of CCN2 function in vivo has focused primarily on its key role as a mediator of excess ECM synthesis in multiple fibrotic diseases.

Molecular Weight: 37.3 kDa

NCBI Accession: [NP_034347](#)

Pathways: [Regulation of Lipid Metabolism by PPARAlpha](#), [Positive Regulation of Endopeptidase Activity](#), [Growth Factor Binding](#)

Application Details

Restrictions: For Research Use only

Handling

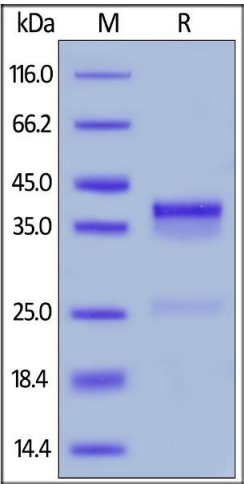
Format: Lyophilized

Buffer: Tris with Potassium glutamate and Arginine, pH 7.0

Handling Advice: Please avoid repeated freeze-thaw cycles.

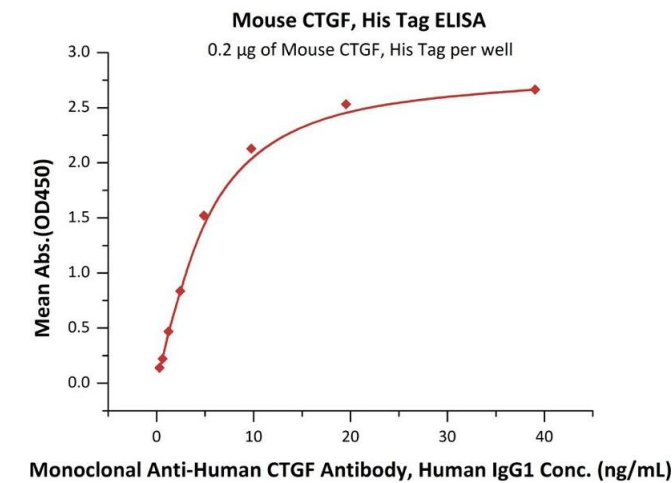
Storage: -20 °C

Images



SDS-PAGE

Image 1. Mouse CTGF, His Tag on under reducing (R) condition. The gel was stained overnight with Coomassie Blue. The purity of the protein is greater than 90 % .



ELISA

Image 2. Immobilized Mouse CTGF, His Tag (ABIN6386422,ABIN6388278) at 2 µg/mL (100 µL/well) can bind Monoclonal A CTGF Antibody, Human IgG1 with a linear range of 0.3-5 ng/mL (QC tested).