

Datasheet for ABIN6391343  
**anti-CTGF antibody (AA 111-123)**

## 3 Images

[Go to Product page](#)

## Overview

Quantity:	100 µg
Target:	CTGF
Binding Specificity:	AA 111-123
Reactivity:	Human, Mouse
Host:	Goat
Clonality:	Polyclonal
Conjugate:	This CTGF antibody is un-conjugated
Application:	Immunohistochemistry (IHC), ELISA, Immunofluorescence (IF)

## Product Details

Purpose:	CTGF (aa111-123)
Sequence:	RSGESFQSSC KYQ
Isotype:	IgG
Cross-Reactivity:	Cow, Dog, Human, Mouse, Pig, Rat
Purification:	Purified from goat serum by ammonium sulphate precipitation followed by antigen affinity chromatography using the immunizing peptide.
Grade:	Verified

## Target Details

Target:	CTGF
---------	------

## Target Details

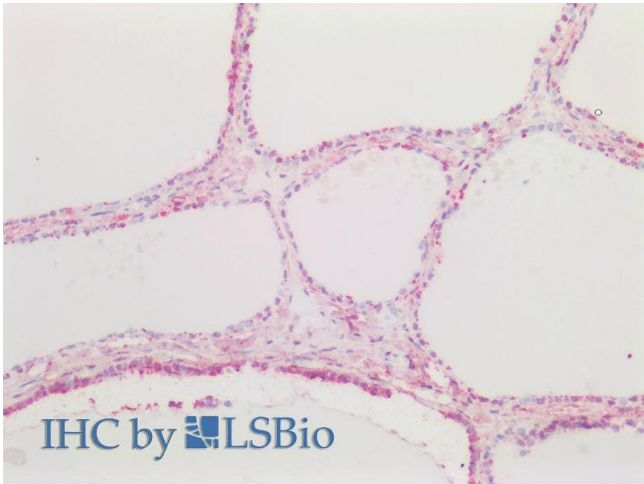
Alternative Name:	CTGF ( <a href="#">CTGF Products</a> )
Background:	CTGF, connective tissue growth factor, CCN2, HCS24, IGFBP8, MGC102839, NOV2, CCN family member 2, IBP-8, IGF-binding protein 8, IGFBP-8, OTTHUMP00000017213, hypertrophic chondrocyte-specific protein 24, insulin-like growth factor-binding protein 8
Gene ID:	1490, 14219, 64032
NCBI Accession:	<a href="#">NP_001892</a>
Pathways:	<a href="#">Regulation of Lipid Metabolism by PPARalpha</a> , <a href="#">Positive Regulation of Endopeptidase Activity</a> , <a href="#">Growth Factor Binding</a>

## Application Details

Application Notes:	Immunohistochemistry: Paraffin embedded Human Thyroid. Recommended concentration: 5 µg/mL. Peptide ELISA: antibody detection limit dilution 1:16000.
Comment:	<b>Immunofluorescence:</b> Strong expression of the protein seen in the cytoplasm of HepG2 and NIH3T3 cells. Recommended concentration: 10µg/ml.
Restrictions:	For Research Use only

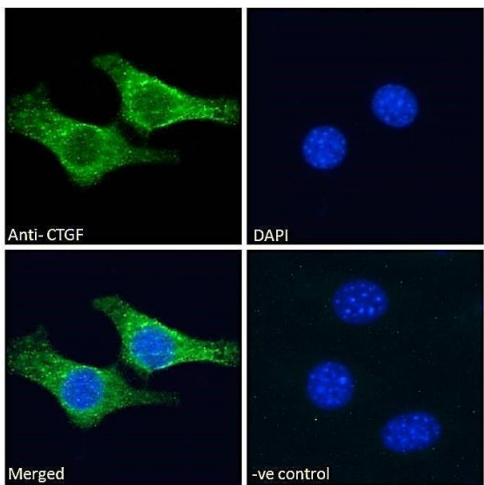
## Handling

Format:	Liquid
Concentration:	0.5 mg/mL
Buffer:	Supplied at 0.5 mg/mL in Tris saline, 0.02 % sodium azide, pH 7.3 with 0.5 % bovine serum albumin.
Preservative:	Sodium azide
Precaution of Use:	This product contains Sodium azide: a POISONOUS AND HAZARDOUS SUBSTANCE which should be handled by trained staff only.
Handling Advice:	Minimize freezing and thawing.
Storage:	-20 °C
Storage Comment:	Aliquot and store at -20°C, with minimal freeze/thawing. A working aliquot may be refrigerated at 4°C for a few weeks and still remain viable.



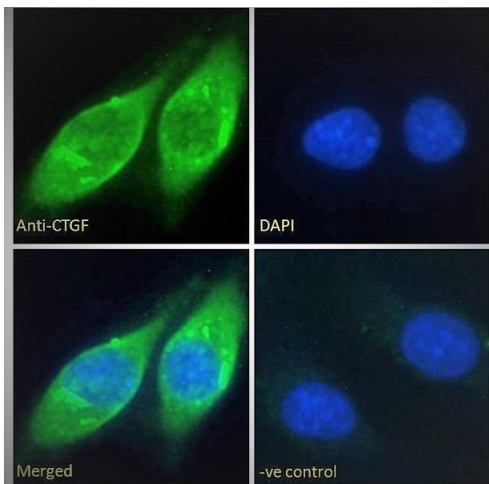
### Immunohistochemistry

**Image 1.** ABIN6391343 (5µg/ml) staining of paraffin embedded Human Thyroid. Steamed antigen retrieval with citrate buffer pH 6, AP-staining.



### Immunofluorescence

**Image 2.** ABIN6391343 Immunofluorescence analysis of paraformaldehyde fixed NIH3T3 cells, permeabilized with 0.15% Triton. Primary incubation 1hr (10ug/ml) followed by Alexa Fluor 488 secondary antibody (2ug/ml), showing cytoplasmic staining. The nuclear stain is DAPI



### Immunofluorescence

**Image 3.** ABIN6391343 Immunofluorescence analysis of paraformaldehyde fixed HepG2 cells, permeabilized with 0.15% Triton. Primary incubation 1hr (10ug/ml) followed by Alexa Fluor 488 secondary antibody (2ug/ml), showing cytoplasmic staining. The nuclear stain is DAPI (blue). Negative control: Unimmunized goat IgG (10ug/ml) followed by Alexa Fluor 488 secondary antibody (2ug/ml).