



Datasheet for ABIN6391349  
**anti-PPP1R12A antibody (C-Term)**



[Go to Product page](#)

9 Images

Overview

Quantity:	100 µg
Target:	PPP1R12A
Binding Specificity:	C-Term
Reactivity:	Human
Host:	Goat
Clonality:	Polyclonal
Conjugate:	This PPP1R12A antibody is un-conjugated
Application:	Immunohistochemistry (IHC), ELISA, Immunofluorescence (IF), Flow Cytometry (FACS)

Product Details

Purpose:	PPP1R12A
Sequence:	REDEYKQKYS RTYD
Isotype:	IgG
Cross-Reactivity:	Human
Purification:	Purified from goat serum by ammonium sulphate precipitation followed by antigen affinity chromatography using the immunizing peptide.
Grade:	Verified

Target Details

Target:	PPP1R12A
---------	----------

## Target Details

---

Alternative Name:	PPP1R12A ( <a href="#">PPP1R12A Products</a> )
Background:	Protein phosphatase 1, regulatory (inhibitor) subunit 12A, MBS, MGC133042, MYPT1, myosin phosphatase, target subunit 1
NCBI Accession:	<a href="#">NP_002471</a> , <a href="#">NP_001231919</a> , <a href="#">NP_001231921</a> , <a href="#">NP_001137358</a>
Pathways:	<a href="#">M Phase</a>

## Application Details

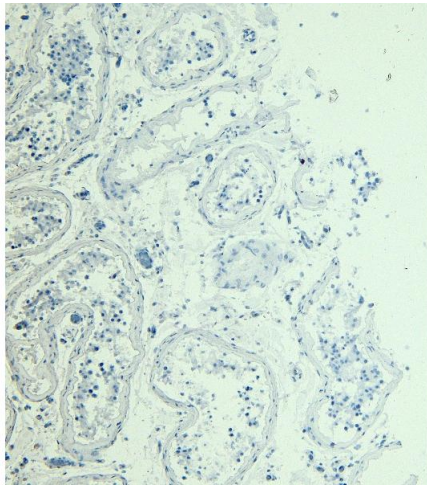
---

Application Notes:	Immunohistochemistry: Paraffin embedded Human Testis. Recommended concentration: 4-5 $\mu$ g/mL. Preliminary testing showed positive staining of the neuronal cells and neuropils in paraffin embedded Human Cortex. Peptide ELISA: antibody detection limit dilution 1:8000.
Comment:	<b>Immunofluorescence:</b> Strong expression of the protein seen in the cytoplasm of A431 and U2OS cells. Recommended concentration: 10 $\mu$ g/ml. <b>Flow Cytometry:</b> Flow cytometric analysis of A431 cells. Recommended concentration:
Restrictions:	For Research Use only

## Handling

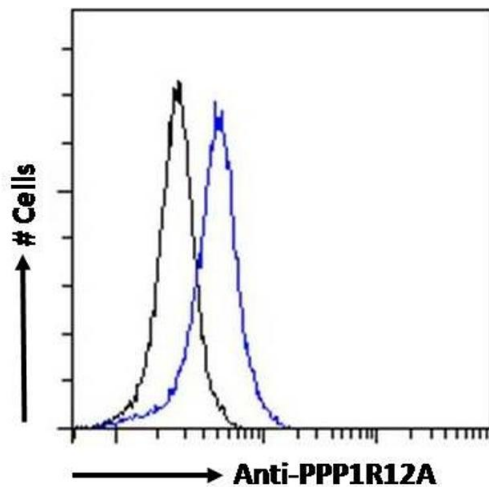
---

Format:	Liquid
Concentration:	0.5 mg/mL
Buffer:	Supplied at 0.5 mg/mL in Tris saline, 0.02 % sodium azide, pH 7.3 with 0.5 % bovine serum albumin.
Preservative:	Sodium azide
Precaution of Use:	This product contains Sodium azide: a POISONOUS AND HAZARDOUS SUBSTANCE which should be handled by trained staff only.
Handling Advice:	Minimize freezing and thawing.
Storage:	-20 °C
Storage Comment:	Aliquot and store at -20°C, with minimal freeze/thawing. A working aliquot may be refrigerated at 4°C for a few weeks and still remain viable.



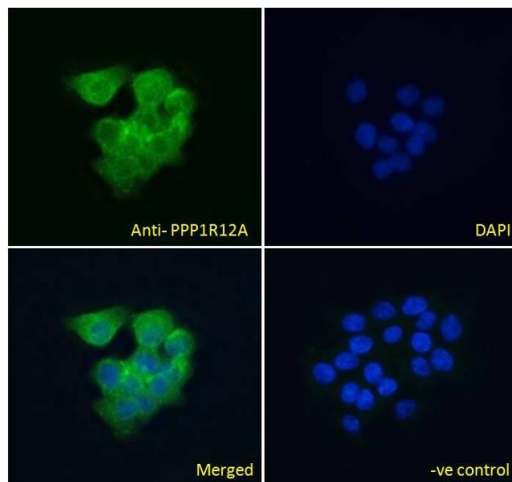
### Immunohistochemistry

**Image 1.** (ABIN6391349) Negative Control showing staining of paraffin embedded Human Testis, with no primary antibody.



### Flow Cytometry

**Image 2.** ABIN6391349 Flow cytometric analysis of paraformaldehyde fixed HEK293 cells (blue line), permeabilized with 0.5% Triton. Primary incubation 1hr (10ug/ml) followed by Alexa Fluor 488 secondary antibody (0.4ug/ml). IgG control: Unimmunized goat IgG (black line) followed by Alexa Fluor 488 secondary antibody.



### Immunofluorescence

**Image 3.** ABIN6391349 Immunofluorescence analysis of paraformaldehyde fixed A431 cells, permeabilized with 0.15% Triton. Primary incubation 1hr (10ug/ml) followed by Alexa Fluor 488 secondary antibody (4ug/ml), showing cytoplasmic staining. The nuclear stain is DAPI (blue). Negative control: Unimmunized goat IgG (10ug/ml) followed by Alexa Fluor 488 secondary antibody (2ug/ml).

Please check the [product details page](#) for more images. Overall 9 images are available for ABIN6391349.