

Datasheet for ABIN6391351  
**anti-TRPC1 antibody (Internal Region)**

## 5 Images

[Go to Product page](#)

## Overview

Quantity:	100 µg
Target:	TRPC1
Binding Specificity:	Internal Region
Reactivity:	Human
Host:	Goat
Clonality:	Polyclonal
Conjugate:	This TRPC1 antibody is un-conjugated
Application:	ELISA, Immunohistochemistry (IHC), Flow Cytometry (FACS), Immunofluorescence (IF)

## Product Details

Purpose:	TRPC1
Sequence:	NLKQKRDENY QK
Isotype:	IgG
Cross-Reactivity:	Dog, Human, Mouse, Rat
Purification:	Purified from goat serum by ammonium sulphate precipitation followed by antigen affinity chromatography using the immunizing peptide.
Grade:	Verified

## Target Details

Target:	TRPC1
---------	-------

## Target Details

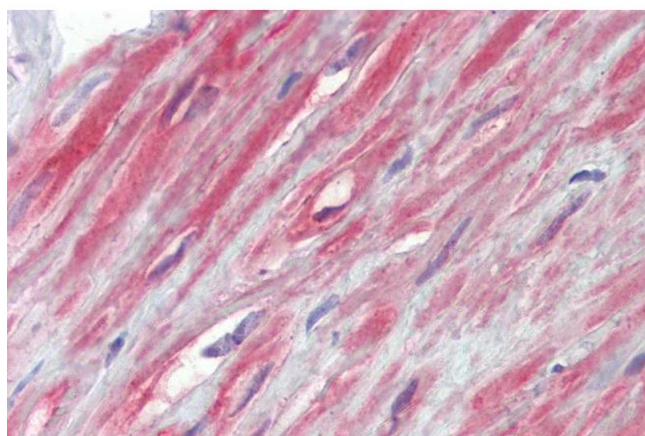
Alternative Name:	TRPC1 ( <a href="#">TRPC1 Products</a> )
Background:	TRPC1, transient receptor potential cation channel, subfamily C, member 1, HTRP-1, MGC133334, MGC133335, TRP1, transient receptor potential channel 1
Gene ID:	7220
NCBI Accession:	<a href="#">NP_003295</a> , <a href="#">NP_001238774</a>

## Application Details

Application Notes:	Immunohistochemistry: Paraffin embedded Human Prostate and Brain (Cortex). Recommended concentration: 3.75 µg/mL. Peptide ELISA: antibody detection limit dilution 1:32000.
Comment:	<b>Immunofluorescence:</b> Strong expression of the protein seen in the cytoplasm/vesicles of HeLa cells. Strong expression of the protein seen in the cytoplasm and nuclei of U2OS cells. Recommended concentration: 10µg/ml. <b>Flow Cytome</b>
Restrictions:	For Research Use only

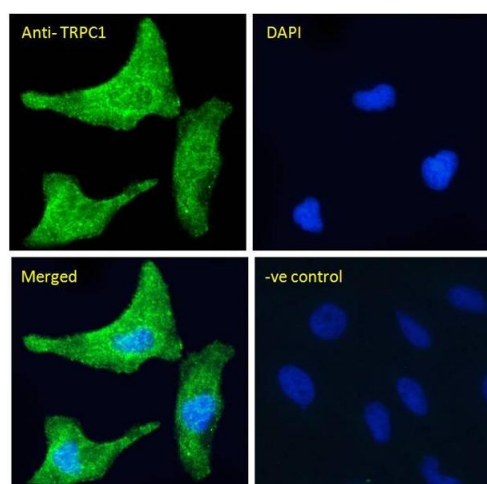
## Handling

Format:	Liquid
Concentration:	0.5 mg/mL
Buffer:	Supplied at 0.5 mg/mL in Tris saline, 0.02 % sodium azide, pH 7.3 with 0.5 % bovine serum albumin.
Preservative:	Sodium azide
Precaution of Use:	This product contains Sodium azide: a POISONOUS AND HAZARDOUS SUBSTANCE which should be handled by trained staff only.
Handling Advice:	Minimize freezing and thawing.
Storage:	-20 °C
Storage Comment:	Aliquot and store at -20°C, with minimal freeze/thawing. A working aliquot may be refrigerated at 4°C for a few weeks and still remain viable.



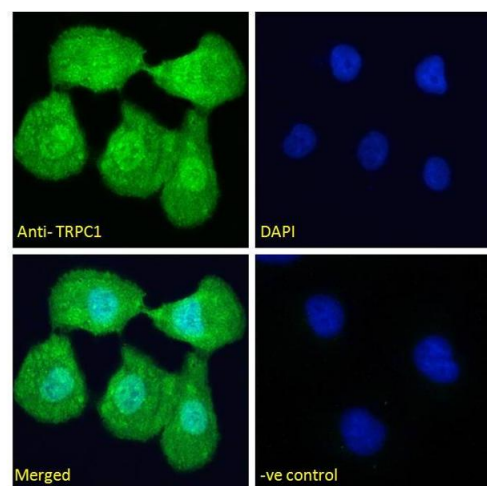
#### Immunohistochemistry

**Image 1.** ABIN6391351 (3.75µg/ml) staining of paraffin embedded Human Prostate. Steamed antigen retrieval with citrate buffer pH 6, AP-staining.



#### Immunofluorescence

**Image 2.** ABIN6391351 Immunofluorescence analysis of paraformaldehyde fixed HeLa cells, permeabilized with 0.15% Triton. Primary incubation 1hr (10ug/ml) followed by Alexa Fluor 488 secondary antibody (4ug/ml), showing cytoplasmic/Vesicle staining. The nuclear stain is



#### Immunofluorescence

**Image 3.** ABIN6391351 Immunofluorescence analysis of paraformaldehyde fixed U2OS cells, permeabilized with 0.15% Triton. Primary incubation 1hr (10ug/ml) followed by Alexa Fluor 488 secondary antibody (4ug/ml), showing nuclear and cytoplasmic staining. The nuclear stain is DAPI (blue). Negative control: Unimmunized goat IgG (10ug/ml) followed by Alexa Fluor 488 secondary antibody (2ug/ml).

Please check the [product details page](#) for more images. Overall 5 images are available for ABIN6391351.