

Datasheet for ABIN6391352

anti-TRPM2 antibody (Internal Region)[Go to Product page](#)**3** Images

Overview

Quantity:	100 µg
Target:	TRPM2
Binding Specificity:	Internal Region
Reactivity:	Human
Host:	Goat
Clonality:	Polyclonal
Conjugate:	This TRPM2 antibody is un-conjugated
Application:	Immunohistochemistry (IHC), ELISA, Immunofluorescence (IF), Flow Cytometry (FACS)

Product Details

Purpose:	TRPM2
Sequence:	QQKQRPEQKI ED
Isotype:	IgG
Cross-Reactivity:	Cow, Human, Mouse
Purification:	Purified from goat serum by ammonium sulphate precipitation followed by antigen affinity chromatography using the immunizing peptide.
Grade:	Verified

Target Details

Target:	TRPM2
---------	-------

Target Details

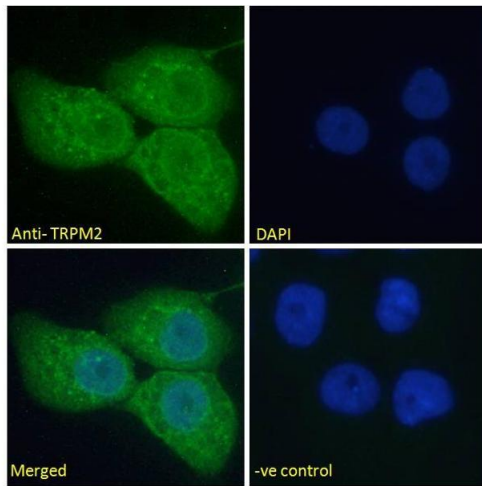
Alternative Name:	TRPM2 (TRPM2 Products)
Background:	TRPM2, transient receptor potential cation channel, subfamily M, member 2, EREG1, KNP3, LTRPC2, MGC133383, NUDT9H, NUDT9L1, TRPC7, estrogen responsive element associated gene 1, long transient receptor potential channel 2, transient receptor potential cha
Gene ID:	7226
NCBI Accession:	NP_003298 , NP_001307279 , NP_001307280

Application Details

Application Notes:	Immunohistochemistry: Paraffin embedded Human Pancreas and Brain (Cortex) . Recommended concentration: 3.75 µg/mL. Peptide ELISA: antibody detection limit dilution 1:16000.
Comment:	Immunofluorescence: Strong expression of the protein seen in the nuclear membranes and cytoplasm of A431 cells. Recommended concentration: 10µg/ml. Flow Cytometry: Flow cytometric analysis of Jurkat cells. Recommended
Restrictions:	For Research Use only

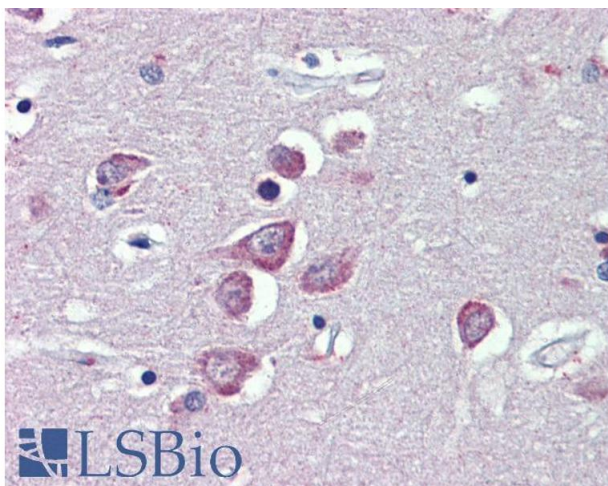
Handling

Format:	Liquid
Concentration:	0.5 mg/mL
Buffer:	Supplied at 0.5 mg/mL in Tris saline, 0.02 % sodium azide, pH 7.3 with 0.5 % bovine serum albumin.
Preservative:	Sodium azide
Precaution of Use:	This product contains Sodium azide: a POISONOUS AND HAZARDOUS SUBSTANCE which should be handled by trained staff only.
Handling Advice:	Minimize freezing and thawing.
Storage:	-20 °C
Storage Comment:	Aliquot and store at -20°C, with minimal freeze/thawing. A working aliquot may be refrigerated at 4°C for a few weeks and still remain viable.



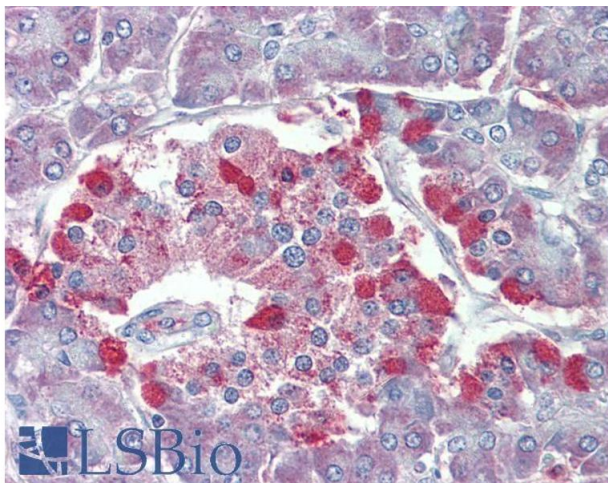
Immunofluorescence

Image 1. ABIN6391352 Immunofluorescence analysis of paraformaldehyde fixed A431 cells, permeabilized with 0.15% Triton. Primary incubation 1hr (10ug/ml) followed by Alexa Fluor 488 secondary antibody (2ug/ml), showing nuclear membrane and cytoplasmic staining. The nuclear stain is DAPI (blue). Negative control: Unimmunized goat IgG (10ug/ml) followed by Alexa Fluor 488 secondary antibody (2ug/ml).



Immunohistochemistry

Image 2. ABIN6391352 (3.75µg/ml) staining of paraffin embedded Human Cortex. Steamed antigen retrieval with citrate buffer Ph 6, AP-staining.



Immunohistochemistry

Image 3. ABIN6391352 (3.75µg/ml) staining of paraffin embedded Human Pancreas. Steamed antigen retrieval with citrate buffer Ph 6, AP-staining.