



[Go to Product page](#)

Datasheet for ABIN6391361

## anti-Sonic Hedgehog antibody (C-Term)

### 5 Images

#### Overview

Quantity:	100 µg
Target:	Sonic Hedgehog (SHH)
Binding Specificity:	C-Term
Reactivity:	Human, Mouse
Host:	Goat
Clonality:	Polyclonal
Conjugate:	This Sonic Hedgehog antibody is un-conjugated
Application:	Western Blotting (WB), ELISA, Immunofluorescence (IF), Flow Cytometry (FACS)

#### Product Details

Purpose:	SHH
Sequence:	DSEALHPLGM AVK
Isotype:	IgG
Cross-Reactivity:	Dog, Human, Rat
Purification:	Purified from goat serum by ammonium sulphate precipitation followed by antigen affinity chromatography using the immunizing peptide.
Grade:	Verified

#### Target Details

Target:	Sonic Hedgehog (SHH)
---------	----------------------

## Target Details

---

Alternative Name:	SHH ( <a href="#">SHH Products</a> )
Background:	SHH, sonic hedgehog homolog (Drosophila), HGNC:10848, HHG1, HLP3, HPE3, SMMCI , sonic hedgehog
Gene ID:	6469
NCBI Accession:	<a href="#">NP_000184</a>
Pathways:	<a href="#">Hedgehog Signaling</a> , <a href="#">Dopaminergic Neurogenesis</a> , <a href="#">Regulation of Muscle Cell Differentiation</a> , <a href="#">Tube Formation</a> , <a href="#">Skeletal Muscle Fiber Development</a>

## Application Details

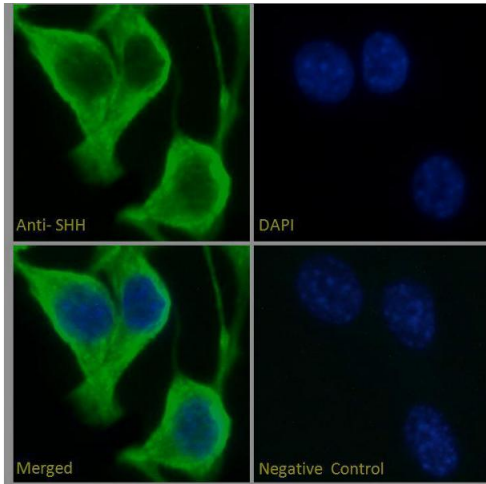
---

Application Notes:	Western Blot: Approx 48 kDa band observed in Human Liver lysates (calculated MW of 49.6 kDa according to NP_000184.1 Recommended concentration: 1-3 µg/mL. Primary incubation 1 hour at room temperature. Preliminary testing was unsuccessful on Rat Liver for t Peptide ELISA: antibody detection limit dilution 1:32000.
Comment:	<b>Immunofluorescence:</b> Strong expression of the protein seen in the membranes of HeLa, U251 and NIH3T3 cells. Recommended concentration: 10µg/ml. <b>Flow Cytometry:</b> Flow cytometric analysis of HeLa cells. Recommended concen
Restrictions:	For Research Use only

## Handling

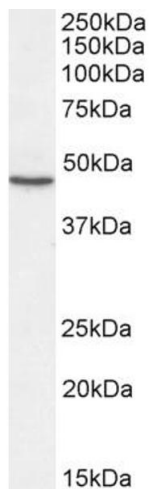
---

Format:	Liquid
Concentration:	0.5 mg/mL
Buffer:	Supplied at 0.5 mg/mL in Tris saline, 0.02 % sodium azide, pH 7.3 with 0.5 % bovine serum albumin.
Preservative:	Sodium azide
Precaution of Use:	This product contains Sodium azide: a POISONOUS AND HAZARDOUS SUBSTANCE which should be handled by trained staff only.
Handling Advice:	Minimize freezing and thawing.
Storage:	-20 °C
Storage Comment:	Aliquot and store at -20°C, with minimal freeze/thawing. A working aliquot may be refrigerated at 4°C for a few weeks and still remain viable.



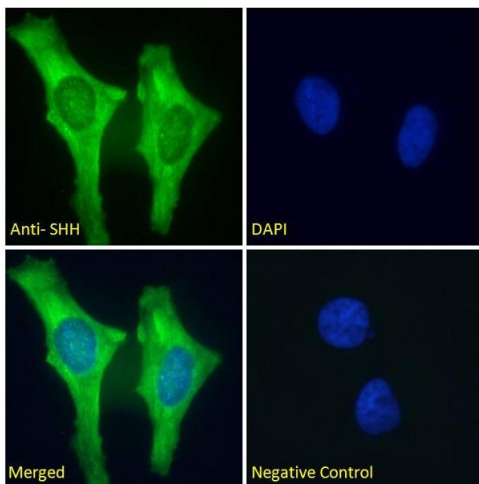
### Immunofluorescence

**Image 1.** ABIN6391361 Immunofluorescence analysis of paraformaldehyde fixed NIH3T3 cells, permeabilized with 0.15% Triton. Primary incubation 1hr (10ug/ml) followed by Alexa Fluor 488 secondary antibody (2ug/ml), showing membrane staining. The nuclear stain is DAPI (blue). Negative control: Unimmunized goat IgG (10ug/ml) followed by Alexa Fluor 488 secondary antibody (2ug/ml).



### Western Blotting

**Image 2.** ABIN6391361 (2µg/ml) staining of Human Liver lysate (35µg protein in RIPA buffer). Detected by chemiluminescence.



### Immunofluorescence

**Image 3.** ABIN6391361 Immunofluorescence analysis of paraformaldehyde fixed HeLa cells, permeabilized with 0.15% Triton. Primary incubation 1hr (10ug/ml) followed by Alexa Fluor 488 secondary antibody (2ug/ml), showing membrane staining. The nuclear stain is DAPI (blue). Negative control: Unimmunized goat IgG (10ug/ml) followed by Alexa Fluor 488 secondary antibody (2ug/ml).

Please check the [product details page](#) for more images. Overall 5 images are available for ABIN6391361.