

Datasheet for ABIN6391368
anti-CTCF antibody (Internal Region)



[Go to Product page](#)

1 Image

Overview

Quantity:	100 µg
Target:	CTCF
Binding Specificity:	Internal Region
Reactivity:	Human
Host:	Goat
Clonality:	Polyclonal
Conjugate:	This CTCF antibody is un-conjugated
Application:	Western Blotting (WB), ELISA

Product Details

Purpose:	CTCF (isoform 1)
Sequence:	KKSKLRYTEE GKD
Isotype:	IgG
Specificity:	This antibody is expected to recognize reported isoform 1 (NP_006556.1) only.
Cross-Reactivity:	Cow, Dog, Human, Mouse, Pig, Rat
Purification:	Purified from goat serum by ammonium sulphate precipitation followed by antigen affinity chromatography using the immunizing peptide.
Grade:	Verified

Target Details

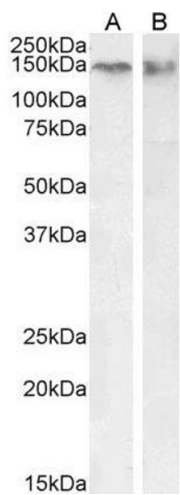
Target:	CTCF
Alternative Name:	CTCF (CTCF Products)
Background:	CTCF, CCCTC-binding factor (zinc finger protein), 11 zinc finger transcriptional repressor, 11-zinc finger protein, CTCFL paralog, transcriptional repressor CTCF
Gene ID:	10664, 13018, 83726
NCBI Accession:	NP_006556

Application Details

Application Notes:	Western Blot: Approx 150 kDa band observed in lysates of cell line Jurkat and nuclear Jurkat (calculated MW of 82.8 kDa according to NP_006556.1). This molecular weight is routinely observed by other sources. Recommended concentration: 0.03-0.3 µg/mL. Peptide ELISA: antibody detection limit dilution 1:4000.
Restrictions:	For Research Use only

Handling

Format:	Liquid
Concentration:	0.5 mg/mL
Buffer:	Supplied at 0.5 mg/mL in Tris saline, 0.02 % sodium azide, pH 7.3 with 0.5 % bovine serum albumin.
Preservative:	Sodium azide
Precaution of Use:	This product contains Sodium azide: a POISONOUS AND HAZARDOUS SUBSTANCE which should be handled by trained staff only.
Handling Advice:	Minimize freezing and thawing.
Storage:	-20 °C
Storage Comment:	Aliquot and store at -20°C, with minimal freeze/thawing. A working aliquot may be refrigerated at 4°C for a few weeks and still remain viable.



Western Blotting

Image 1. ABIN6391368 (0.03µg/ml) staining of Jurkat (A) cell lysate and (0.1ug/ml) Jurkat (B) nuclear cell lysate (35µg protein in RIPA buffer). Primary incubation was 1 hour. Detected by chemiluminescence