



[Go to Product page](#)

Datasheet for ABIN6391374  
**anti-CYP2D6 antibody (C-Term)**

1 Image

Overview

Quantity:	100 µg
Target:	CYP2D6
Binding Specificity:	C-Term
Reactivity:	Human
Host:	Goat
Clonality:	Polyclonal
Conjugate:	This CYP2D6 antibody is un-conjugated
Application:	Western Blotting (WB), ELISA

Product Details

Purpose:	CYP2D6
Sequence:	PTGQPRPSHH
Isotype:	IgG
Specificity:	This antibody is expected to recognize both reported isoforms (NP_000097.3, NP_001020332.2).
Cross-Reactivity:	Human
Purification:	Purified from goat serum by ammonium sulphate precipitation followed by antigen affinity chromatography using the immunizing peptide.
Grade:	Verified

## Target Details

---

Target:	CYP2D6
Alternative Name:	CYP2D6 ( <a href="#">CYP2D6 Products</a> )
Background:	CYP2D6, cytochrome P450, family 2, subfamily D, polypeptide 6, CPD6, CYP2D, CYP2D7AP, CYP2D7BP, CYP2D7P2, CYP2D8P2, CYP2DL1, CYPID6, P450-DB1, P450C2D, P450DB1, cytochrome P450 2D6, cytochrome P450, family 2, subfamily D, polypeptide 7 pseudogene 2, cyto
Gene ID:	1565
NCBI Accession:	<a href="#">NP_000097</a> , <a href="#">NP_001020332</a>

## Application Details

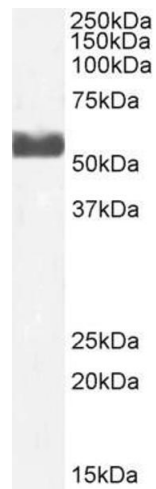
---

Application Notes:	Western Blot: Approx 55 kDa band observed in Human Liver lysates (calculated MW of 55.8 kDa according to NP_000097.3). Recommended concentration: 1-3 µg/mL. Primary incubation 1 hour.at room temperature. Peptide ELISA: antibody detection limit dilution 1:1000.
Restrictions:	For Research Use only

## Handling

---

Format:	Liquid
Concentration:	0.5 mg/mL
Buffer:	Supplied at 0.5 mg/mL in Tris saline, 0.02 % sodium azide, pH 7.3 with 0.5 % bovine serum albumin.
Preservative:	Sodium azide
Precaution of Use:	This product contains Sodium azide: a POISONOUS AND HAZARDOUS SUBSTANCE which should be handled by trained staff only.
Handling Advice:	Minimize freezing and thawing.
Storage:	-20 °C
Storage Comment:	Aliquot and store at -20°C, with minimal freeze/thawing. A working aliquot may be refrigerated at 4°C for a few weeks and still remain viable.



### Western Blotting

**Image 1.** ABIN6391374 (2 $\mu$ g/ml) staining of Human Liver lysate (35 $\mu$ g protein in RIPA buffer). Detected by chemiluminescence.