

Datasheet for ABIN6391375
anti-CYP2R1 antibody (AA 405-418)[Go to Product page](#)

1 Image

Overview

Quantity:	100 µg
Target:	CYP2R1
Binding Specificity:	AA 405-418
Reactivity:	Mouse, Rat
Host:	Goat
Clonality:	Polyclonal
Conjugate:	This CYP2R1 antibody is un-conjugated
Application:	Western Blotting (WB), ELISA

Product Details

Purpose:	Cyp2r1 (mouse aa405-418)
Sequence:	YSVHFDEKYW KDPD
Isotype:	IgG
Cross-Reactivity:	Mouse, Rat
Purification:	Purified from goat serum by ammonium sulphate precipitation followed by antigen affinity chromatography using the immunizing peptide.
Grade:	Verified

Target Details

Target:	CYP2R1
---------	--------

Target Details

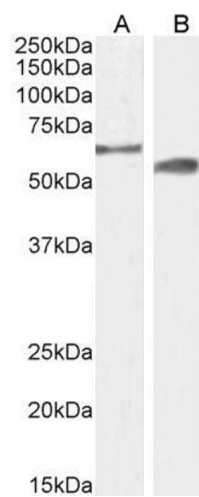
Alternative Name:	CYP2R1 (CYP2R1 Products)
Background:	CYP2R1, cytochrome P450, family 2, subfamily R, polypeptide 1, cytochrome P450 2R1, cytochrome P450, family 2, R1, vitamin D 25-hydroxylase
Gene ID:	120227, 244209, 361631
NCBI Accession:	NP_796356
Pathways:	Metabolism of Steroid Hormones and Vitamin D

Application Details

Application Notes:	Western Blot: Approx 60 kDa band observed in Mouse Testis and approx 55-60 kDa in Rat Testis lysates (calculated MW of 57.3 kDa according to Mouse NP_796356.2 and 54.2 kDa according to Rat XP_006230144.1). Recommended concentration: 1-3 µg/mL. Primary incubation: 1-2 h. Peptide ELISA: antibody detection limit dilution 1:1000.
Restrictions:	For Research Use only

Handling

Format:	Liquid
Concentration:	0.5 mg/mL
Buffer:	Supplied at 0.5 mg/mL in Tris saline, 0.02 % sodium azide, pH 7.3 with 0.5 % bovine serum albumin.
Preservative:	Sodium azide
Precaution of Use:	This product contains Sodium azide: a POISONOUS AND HAZARDOUS SUBSTANCE which should be handled by trained staff only.
Handling Advice:	Minimize freezing and thawing.
Storage:	-20 °C
Storage Comment:	Aliquot and store at -20°C, with minimal freeze/thawing. A working aliquot may be refrigerated at 4°C for a few weeks and still remain viable.



Western Blotting

Image 1. ABIN6391375 (2µg/ml) staining of Mouse (A) and Rat (B) Testes lysate (35µg protein in RIPA buffer). Detected by chemiluminescence.