

Datasheet for ABIN6391376  
**anti-DDX58 antibody (C-Term)**



[Go to Product page](#)

6 Images

### Overview

Quantity:	100 µg
Target:	DDX58
Binding Specificity:	C-Term
Reactivity:	Human
Host:	Goat
Clonality:	Polyclonal
Conjugate:	This DDX58 antibody is un-conjugated
Application:	Immunohistochemistry (IHC), ELISA, Immunofluorescence (IF), Flow Cytometry (FACS)

### Product Details

Purpose:	DDX58
Sequence:	KDFHFEEKIPF DPAE
Isotype:	IgG
Cross-Reactivity:	Human, Mouse
Purification:	Purified from goat serum by ammonium sulphate precipitation followed by antigen affinity chromatography using the immunizing peptide.
Grade:	Verified

### Target Details

Target:	DDX58
---------	-------

## Target Details

---

Alternative Name:	DDX58 ( <a href="#">DDX58 Products</a> )
Background:	DDX58 , DEAD (Asp-Glu-Ala-Asp) box polypeptide 58, DKFZp434J1111 , DKFZp686N19181 , FLJ13599, RIG-I, DEAD/H (Asp-Glu-Ala-Asp/His) box polypeptide , DEAD/H (Asp-Glu-Ala-Asp/His) box polypeptide RIG-I , OTTHUMP00000045225 , RNA helicase , RNA helicase RIG-I
Gene ID:	23586
NCBI Accession:	<a href="#">NP_055129</a>
Pathways:	<a href="#">Activation of Innate immune Response</a> , <a href="#">Hepatitis C</a>

## Application Details

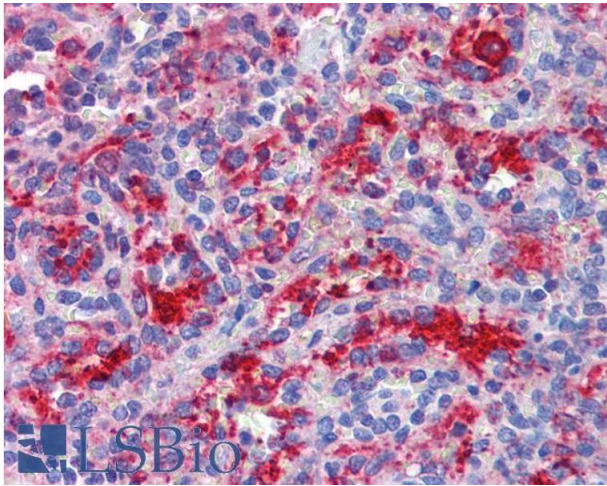
---

Application Notes:	Immunohistochemistry: Paraffin embedded Human Spleen, Placenta, and Brain (Cortex). Recommended concentration: 3.75 µg/mL. Peptide ELISA: antibody detection limit dilution 1:32000.
Comment:	<b>Immunofluorescence:</b> Strong expression of the protein seen in the cytoplasm of A431 and HeLa cells. Recommended concentration: 10µg/ml. <b>Flow Cytometry:</b> Flow cytometric analysis of U937 cells. Recommended concentration:
Restrictions:	For Research Use only

## Handling

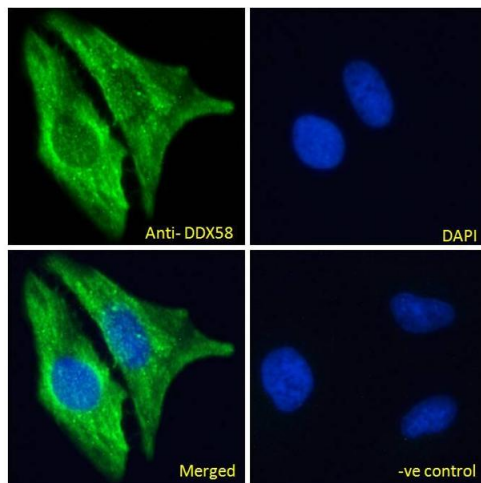
---

Format:	Liquid
Concentration:	0.5 mg/mL
Buffer:	Supplied at 0.5 mg/mL in Tris saline, 0.02 % sodium azide, pH 7.3 with 0.5 % bovine serum albumin.
Preservative:	Sodium azide
Precaution of Use:	This product contains Sodium azide: a POISONOUS AND HAZARDOUS SUBSTANCE which should be handled by trained staff only.
Handling Advice:	Minimize freezing and thawing.
Storage:	-20 °C
Storage Comment:	Aliquot and store at -20°C, with minimal freeze/thawing. A working aliquot may be refrigerated at 4°C for a few weeks and still remain viable.



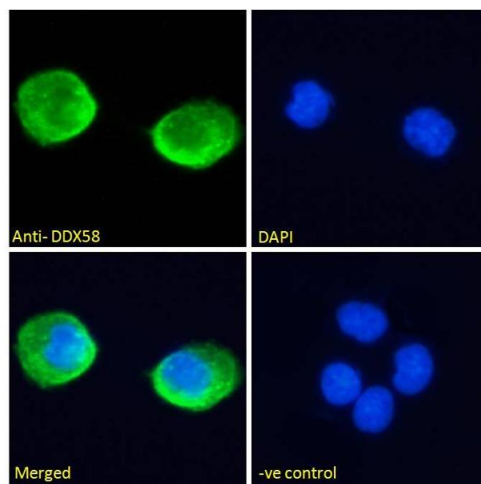
### Immunohistochemistry

**Image 1.** ABIN6391376 (3.75µg/ml) staining of paraffin embedded Human Spleen. Steamed antigen retrieval with citrate buffer pH 6, AP-staining.



### Immunofluorescence

**Image 2.** ABIN6391376 Immunofluorescence analysis of paraformaldehyde fixed HeLa cells, permeabilized with 0.15% Triton. Primary incubation 1hr (10ug/ml) followed by Alexa Fluor 488 secondary antibody (2ug/ml), showing cytoplasmic staining. The nuclear stain is DAPI (b



### Immunofluorescence

**Image 3.** ABIN6391376 Immunofluorescence analysis of paraformaldehyde fixed A431 cells, permeabilized with 0.15% Triton. Primary incubation 1hr (10ug/ml) followed by Alexa Fluor 488 secondary antibody (2ug/ml), showing cytoplasmic staining. The nuclear stain is DAPI (blue). Negative control: Unimmunized goat IgG (10ug/ml) followed by Alexa Fluor 488 secondary antibody (2ug/ml).

Please check the [product details page](#) for more images. Overall 6 images are available for ABIN6391376.