

Datasheet for ABIN6391378

**anti-KCNN4 antibody (Internal Region)**

## 6 Images

[Go to Product page](#)

## Overview

Quantity:	100 µg
Target:	KCNN4
Binding Specificity:	Internal Region
Reactivity:	Human, Mouse
Host:	Goat
Clonality:	Polyclonal
Conjugate:	This KCNN4 antibody is un-conjugated
Application:	Western Blotting (WB), ELISA, Immunohistochemistry (IHC), Immunofluorescence (IF), Flow Cytometry (FACS)

## Product Details

Purpose:	KCNN4 / KCa3.1
Sequence:	ERQAVNATGH LSD
Isotype:	IgG
Cross-Reactivity:	Dog, Human, Mouse, Rat
Purification:	Purified from goat serum by ammonium sulphate precipitation followed by antigen affinity chromatography using the immunizing peptide.
Grade:	Verified

## Target Details

Target:	KCNN4
Alternative Name:	KCNN4 ( <a href="#">KCNN4 Products</a> )
Background:	KCNN4, potassium intermediate/small conductance calcium-activated channel, subfamily N, member 4, IK1, IKCA1, KCA4, KCa3.1, SK4, hIKCa1, hKCa4, hSK4, intermediate conductance calcium-activated potassium channel protein 1, putative erythrocyte intermediate
Gene ID:	3783, 16534, 65206
NCBI Accession:	<a href="#">NP_002241</a>

## Application Details

Application Notes:	Immunohistochemistry: Paraffin embedded Human Adrenal Gland, Kidney and Liver. Recommended concentration: 3.75 µg/mL. Western Blot: Approx 50 kDa band observed in Human Cerebellum lysates and in lysates of cell line NIH3T3 (calculated MW of 47.7 kDa, according to Human NP_002241.1 and Mouse NP_032459.3). An additional band of unknown identity was also consistently observe Peptide ELISA: antibody detection limit dilution 1:16000.
Comment:	<b>Immunofluorescence:</b> Strong expression of the protein seen in the cytoplasm/membranes of HeLa cells. Recommended concentration: 10µg/ml. <b>Flow Cytometry:</b> Flow cytometric analysis of HEK293 cells. Recommended concentratio
Restrictions:	For Research Use only

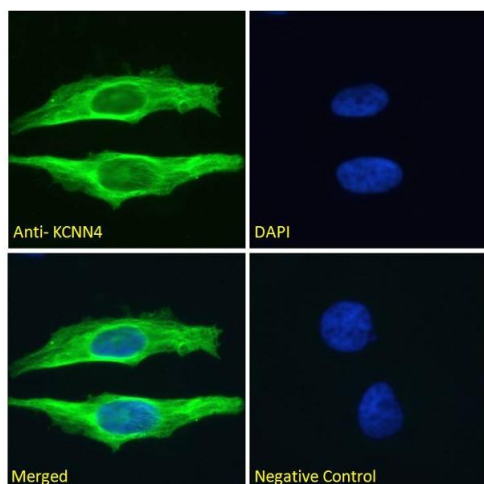
## Handling

Format:	Liquid
Concentration:	0.5 mg/mL
Buffer:	Supplied at 0.5 mg/mL in Tris saline, 0.02 % sodium azide, pH 7.3 with 0.5 % bovine serum albumin.
Preservative:	Sodium azide
Precaution of Use:	This product contains Sodium azide: a POISONOUS AND HAZARDOUS SUBSTANCE which should be handled by trained staff only.
Handling Advice:	Minimize freezing and thawing.
Storage:	-20 °C

## Handling

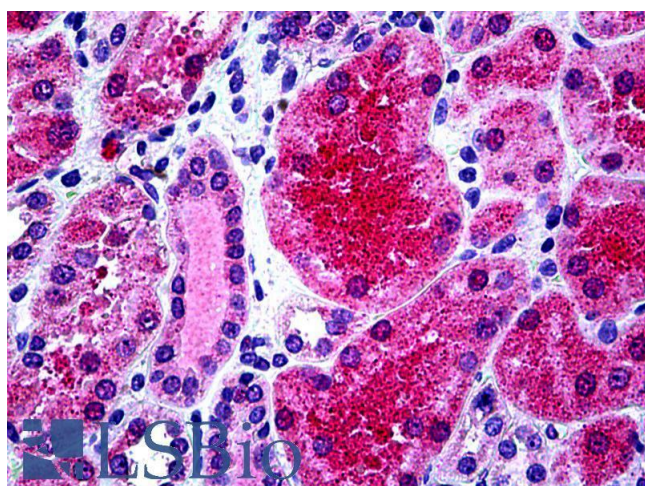
Storage Comment: Aliquot and store at -20°C, with minimal freeze/thawing. A working aliquot may be refrigerated at 4°C for a few weeks and still remain viable.

## Images



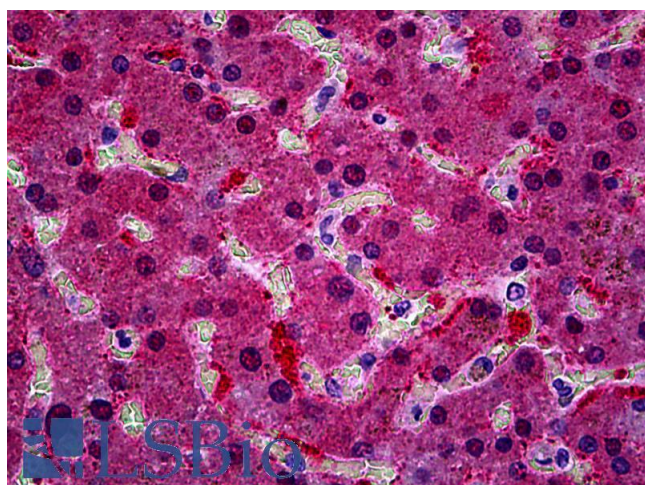
### Immunofluorescence

**Image 1.** ABIN6391378 Immunofluorescence analysis of paraformaldehyde fixed HeLa cells, permeabilized with 0.15% Triton. Primary incubation 1hr (10ug/ml) followed by Alexa Fluor 488 secondary antibody (2ug/ml), showing membrane/cytoplasmic staining. The nuclear stain is DAPI (blue). Negative control: Unimmunized goat IgG (10ug/ml) followed by Alexa Fluor 488 secondary antibody (2ug/ml).



### Immunohistochemistry

**Image 2.** ABIN6391378 (3.75µg/ml) staining of paraffin embedded Human Kidney. Steamed antigen retrieval with citrate buffer pH 6, AP-staining.



### Immunohistochemistry

**Image 3.** ABIN6391378 (3.75µg/ml) staining of paraffin embedded Human Liver. Steamed antigen retrieval with citrate buffer pH 6, AP-staining.

Please check the [product details page](#) for more images. Overall 6 images are available for ABIN6391378.