



[Go to Product page](#)

Datasheet for ABIN6391380

anti-PTPN22 antibody (Internal Region)

5 Images

Overview

Quantity:	100 µg
Target:	PTPN22
Binding Specificity:	Internal Region
Reactivity:	Human
Host:	Goat
Clonality:	Polyclonal
Conjugate:	This PTPN22 antibody is un-conjugated
Application:	ELISA, Immunohistochemistry (IHC), Immunofluorescence (IF), Flow Cytometry (FACS)

Product Details

Purpose:	LYP / PTPN22
Sequence:	CPPNKPAESV QSNNS
Isotype:	IgG
Specificity:	This antibody is specific for human LYP1 and will not cross-react with LYP2.
Cross-Reactivity:	Chimpanzee, Human
Purification:	Purified from goat serum by ammonium sulphate precipitation followed by antigen affinity chromatography using the immunizing peptide.
Grade:	Verified

Target Details

Target:	PTPN22
Alternative Name:	PTPN22 (PTPN22 Products)
Background:	PTPN22, LYP, Lyp1, Lyp2, protein tyrosine phosphatase, non-receptor type 22 (lymphoid), protein tyrosine phosphatase homolog, lymphoid-specific protein tyrosine phosphatase
Gene ID:	26191
NCBI Accession:	NP_057051 , NP_036543 , NP_001180360 , NP_001295226

Application Details

Application Notes:	Immunohistochemistry: Paraffin embedded Human Small Intestine, Thyroid and Adrenal Gland. Recommended concentration: 3.75 µg/mL. Western Blot: Preliminary experiments showed a 100 kDa band in some Daudi cell lysates at 0.5-1 µg/mL. This molecular weight is routinely observed by other sources. An additional band at 75 kDa was also observed and both bands were successfully blocked by i Peptide ELISA: antibody detection limit dilution 1:32000.
Comment:	Immunofluorescence: Strong expression of the protein seen in the nuclei of U2OS cells. Recommended concentration: 10µg/ml. Flow Cytometry: Flow cytometric analysis of Jurkat cells. Recommended concentration: 10ug/ml.
Restrictions:	For Research Use only

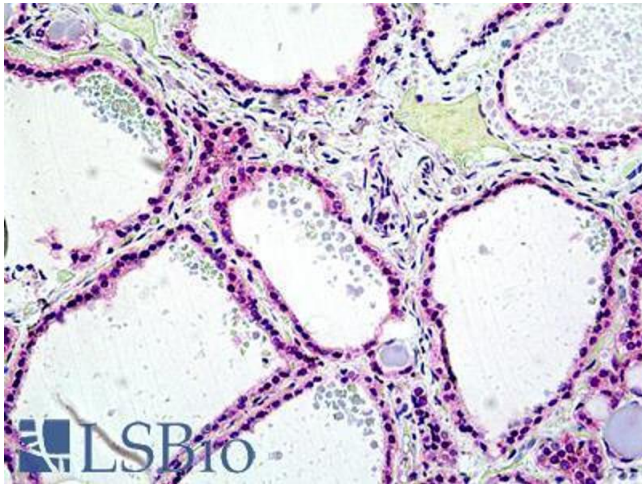
Handling

Format:	Liquid
Concentration:	0.5 mg/mL
Buffer:	Supplied at 0.5 mg/mL in Tris saline, 0.02 % sodium azide, pH 7.3 with 0.5 % bovine serum albumin.
Preservative:	Sodium azide
Precaution of Use:	This product contains Sodium azide: a POISONOUS AND HAZARDOUS SUBSTANCE which should be handled by trained staff only.
Handling Advice:	Minimize freezing and thawing.
Storage:	-20 °C

Handling

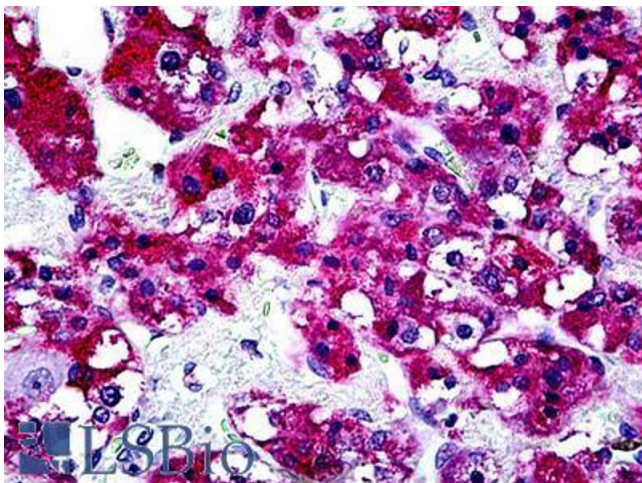
Storage Comment: Aliquot and store at -20°C, with minimal freeze/thawing. A working aliquot may be refrigerated at 4°C for a few weeks and still remain viable.

Images



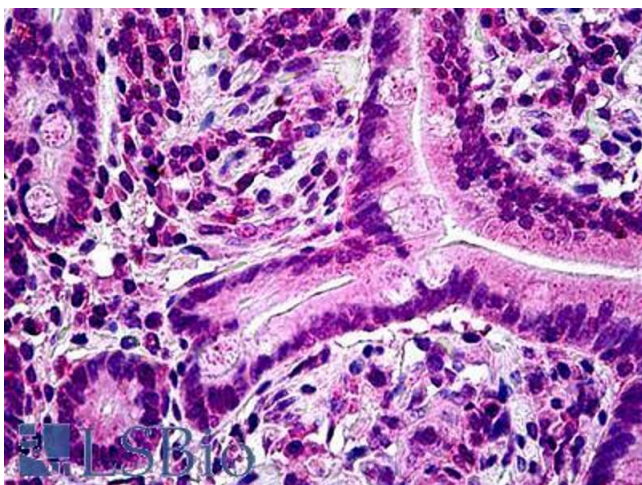
Immunohistochemistry

Image 1. ABIN6391380 (3.75µg/ml) staining of paraffin embedded Human Thyroid. Steamed antigen retrieval with citrate buffer pH 6, AP-staining.



Immunohistochemistry

Image 2. ABIN6391380 (3.75µg/ml) staining of paraffin embedded Human Adrenal Gland. Steamed antigen retrieval with citrate buffer pH 6, AP-staining.



Immunohistochemistry

Image 3. ABIN6391380 (3.75µg/ml) staining of paraffin embedded Human Small Intestine. Steamed antigen retrieval with citrate buffer pH 6, AP-staining.

Please check the [product details page](#) for more images. Overall 5 images are available for ABIN6391380.