

Datasheet for ABIN6391382

anti-PTTG1 antibody (Internal Region)

5 Images

[Go to Product page](#)

Overview

Quantity:	100 µg
Target:	PTTG1
Binding Specificity:	Internal Region
Reactivity:	Human
Host:	Goat
Clonality:	Polyclonal
Conjugate:	This PTTG1 antibody is un-conjugated
Application:	ELISA, Immunohistochemistry (IHC), Immunofluorescence (IF), Flow Cytometry (FACS)

Product Details

Purpose:	Pituitary tumor-transforming 1 / Securin
Sequence:	ILDEERELEK LFQ
Isotype:	IgG
Specificity:	Likely to cross-react to PTTG2 and PTTG3
Cross-Reactivity:	Dog, Human, Mouse
Purification:	Purified from goat serum by ammonium sulphate precipitation followed by antigen affinity chromatography using the immunizing peptide.
Grade:	Verified

Target Details

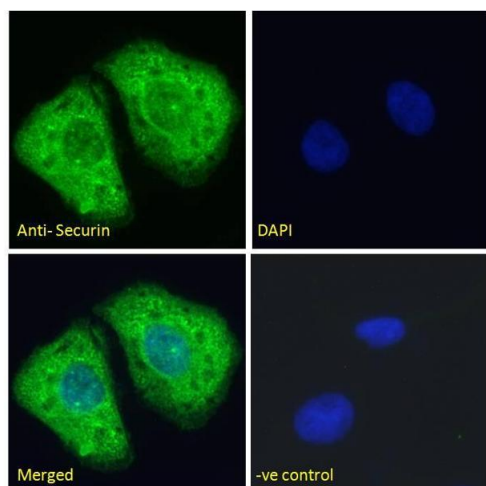
Target:	PTTG1
Alternative Name:	PTTG1 (PTTG1 Products)
Background:	PTTG1, pituitary tumor-transforming 1 , HGNC:9690, EAP1, HPTTG, PTTG, SECURIN, TUTR1, ESP1-associated protein 1, pituitary tumor-transforming protein 1, tumor-transforming protein 1
Gene ID:	9232
NCBI Accession:	NP_004210

Application Details

Application Notes:	Immunohistochemistry: Paraffin embedded Human Tonsil and Testis. Recommended concentration: 2.5 µg/mL. Peptide ELISA: antibody detection limit dilution 1:16000.
Comment:	Immunofluorescence: Strong expression of the protein seen in the cytoplasm of HeLa and U2OS cells. Recommended concentration: 10µg/ml. Flow Cytometry: Flow cytometric analysis of Jurkat cells. Recommended concentration
Restrictions:	For Research Use only

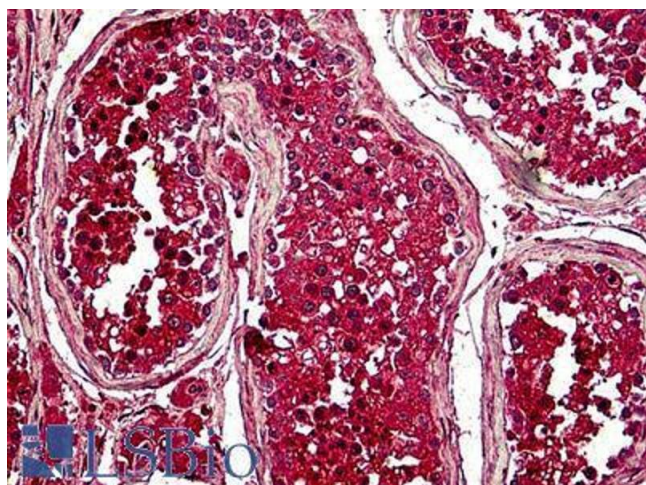
Handling

Format:	Liquid
Concentration:	0.5 mg/mL
Buffer:	Supplied at 0.5 mg/mL in Tris saline, 0.02 % sodium azide, pH 7.3 with 0.5 % bovine serum albumin.
Preservative:	Sodium azide
Precaution of Use:	This product contains Sodium azide: a POISONOUS AND HAZARDOUS SUBSTANCE which should be handled by trained staff only.
Handling Advice:	Minimize freezing and thawing.
Storage:	-20 °C
Storage Comment:	Aliquot and store at -20°C, with minimal freeze/thawing. A working aliquot may be refrigerated at 4°C for a few weeks and still remain viable.



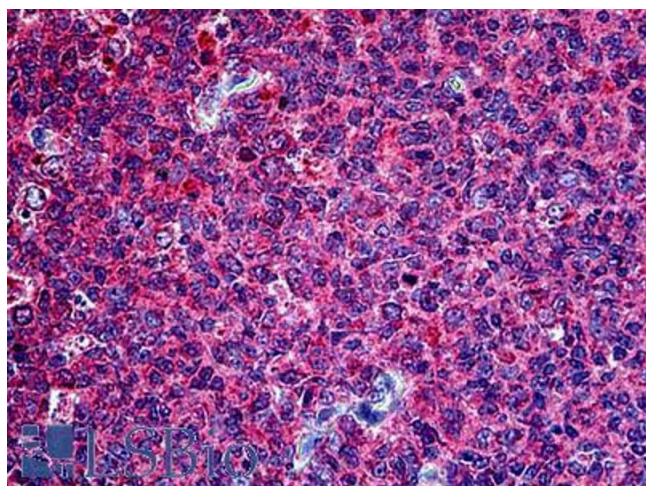
Immunofluorescence

Image 1. ABIN6391382 Immunofluorescence analysis of paraformaldehyde fixed U2OS cells, permeabilized with 0.15% Triton. Primary incubation 1hr (10ug/ml) followed by Alexa Fluor 488 secondary antibody (2ug/ml), showing cytoplasmic staining. The nuclear stain is DAPI (blue). Negative control: Unimmunized goat IgG (10ug/ml) followed by Alexa Fluor 488 secondary antibody (2ug/ml).



Immunohistochemistry

Image 2. ABIN6391382 (2.5µg/ml) staining of paraffin embedded Human Testis. Steamed antigen retrieval with citrate buffer pH 6, AP-staining.



Immunohistochemistry

Image 3. ABIN6391382 (2.5µg/ml) staining of paraffin embedded Human Tonsil. Steamed antigen retrieval with citrate buffer pH 6, AP-staining.

Please check the [product details page](#) for more images. Overall 5 images are available for ABIN6391382.