

Datasheet for ABIN6391392  
**anti-ASCL1 antibody (AA 79-91)**[Go to Product page](#)

## 1 Image

## Overview

Quantity:	100 µg
Target:	ASCL1
Binding Specificity:	AA 79-91
Reactivity:	Human, Mouse, Rat
Host:	Goat
Clonality:	Polyclonal
Conjugate:	This ASCL1 antibody is un-conjugated
Application:	ELISA, Western Blotting (WB), Immunofluorescence (IF)

## Product Details

Purpose:	ASCL1 (aa79-91)
Sequence:	HKSAPKQVKR QRS
Isotype:	IgG
Cross-Reactivity:	Cow, Dog, Human, Mouse, Rat
Purification:	Purified from goat serum by ammonium sulphate precipitation followed by antigen affinity chromatography using the immunizing peptide.
Grade:	Verified

## Target Details

Target:	ASCL1
---------	-------

## Target Details

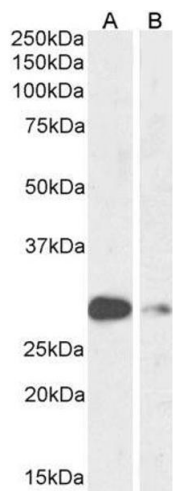
Alternative Name:	ASCL1 ( <a href="#">ASCL1 Products</a> )
Background:	ASCL1, achaete-scute complex homolog 1 (Drosophila), ASH1, HASH1, MASH1, bHLHa46, ASH-1, achaete scute protein, achaete-scute complex-like 1, achaete-scute homolog 1, class A basic helix-loop-helix protein 46
Gene ID:	429, 17172, 64186
NCBI Accession:	<a href="#">NP_004307</a>
Pathways:	<a href="#">Dopaminergic Neurogenesis</a>

## Application Details

Application Notes:	Western Blot: Approx 28 kDa band observed in Mouse and Rat Lung lysates (calculated MW of 24.7 kDa according to Mouse NP_032579.2 and 24.9 kDa according to Rat NP_071779) . Recommended concentration: 0.3-1 µg/mL. Peptide ELISA: antibody detection limit dilution 1:32000.
Comment:	<b>Immunofluorescence:</b> Strong expression of the protein seen in the nuclei and cytoplasm of MCF7 and U2OS cells. Recommended concentration: 10µg/ml.
Restrictions:	For Research Use only

## Handling

Format:	Liquid
Concentration:	0.5 mg/mL
Buffer:	Supplied at 0.5 mg/mL in Tris saline, 0.02 % sodium azide, pH 7.3 with 0.5 % bovine serum albumin.
Preservative:	Sodium azide
Precaution of Use:	This product contains Sodium azide: a POISONOUS AND HAZARDOUS SUBSTANCE which should be handled by trained staff only.
Handling Advice:	Minimize freezing and thawing.
Storage:	-20 °C
Storage Comment:	Aliquot and store at -20°C, with minimal freeze/thawing. A working aliquot may be refrigerated at 4°C for a few weeks and still remain viable.



Western Blotting

**Image 1.** ABIN6391392 (1µg/ml) staining of Mouse (A) and Rat (B) Lung lysate (35µg protein in RIPA buffer). Primary incubation was 1 hour. Detected by chemiluminescence