

Datasheet for ABIN6391395  
**anti-MAPK8IP1 antibody (AA 265-279)**[Go to Product page](#)

## 1 Image

## Overview

Quantity:	100 µg
Target:	MAPK8IP1
Binding Specificity:	AA 265-279
Reactivity:	Human
Host:	Goat
Clonality:	Polyclonal
Conjugate:	This MAPK8IP1 antibody is un-conjugated
Application:	Western Blotting (WB), ELISA

## Product Details

Purpose:	JIP1 / MAPK8IP1 (aa265-279)
Sequence:	DRIHYQADVR LEATE
Isotype:	IgG
Cross-Reactivity:	Dog, Human, Mouse, Pig, Rat
Purification:	Purified from goat serum by ammonium sulphate precipitation followed by antigen affinity chromatography using the immunizing peptide.
Grade:	Verified

## Target Details

Target:	MAPK8IP1
---------	----------

## Target Details

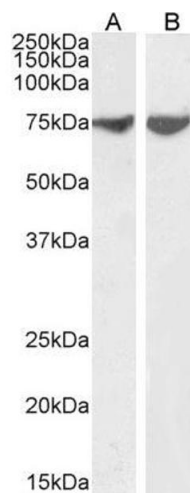
Alternative Name:	MAPK8IP1 ( <a href="#">MAPK8IP1 Products</a> )
Background:	MAPK8IP1, mitogen-activated protein kinase 8 interacting protein 1, IB1, JIP-1, JIP1, PRKM8IP, C-Jun-amino-terminal kinase-interacting protein 1, IB-1, JNK MAP kinase scaffold protein 1, JNK-interacting protein 1, PRKM8 interacting protein, islet-brain 1
Gene ID:	9479, 19099, 116457
NCBI Accession:	<a href="#">NP_005447</a>

## Application Details

Application Notes:	Western Blot: Approx 75 kDa band observed in Human Brain (Amygdala and Cerebellum) lysates (calculated MW of 77.5 kDa according to NP_005447.1). Recommended concentration: 0.3-1 µg/mL. Primary incubation 1 hour at room temperature. Peptide ELISA: antibody detection limit dilution 1:32000.
Restrictions:	For Research Use only

## Handling

Format:	Liquid
Concentration:	0.5 mg/mL
Buffer:	Supplied at 0.5 mg/mL in Tris saline, 0.02 % sodium azide, pH 7.3 with 0.5 % bovine serum albumin.
Preservative:	Sodium azide
Precaution of Use:	This product contains Sodium azide: a POISONOUS AND HAZARDOUS SUBSTANCE which should be handled by trained staff only.
Handling Advice:	Minimize freezing and thawing.
Storage:	-20 °C
Storage Comment:	Aliquot and store at -20°C, with minimal freeze/thawing. A working aliquot may be refrigerated at 4°C for a few weeks and still remain viable.



Western Blotting

**Image 1.** ABIN6391395 (1µg/ml) staining of Human Amygdala (A) and Cerebellum (B) lysate (35µg protein in RIPA buffer). Detected by chemiluminescence.