

Datasheet for ABIN6391414
anti-SLC7A7 antibody (N-Term)[Go to Product page](#)

1 Image

Overview

Quantity:	100 µg
Target:	SLC7A7 (Slc7a7)
Binding Specificity:	N-Term
Reactivity:	Human
Host:	Goat
Clonality:	Polyclonal
Conjugate:	This SLC7A7 antibody is un-conjugated
Application:	ELISA, Western Blotting (WB)

Product Details

Purpose:	SLC7A7 / y+LAT-1
Sequence:	SQPEVETSPL GD
Isotype:	IgG
Specificity:	Reported variants represent identical protein: NP_001119577.1, NP_001119578.1
Cross-Reactivity:	Human
Purification:	Purified from goat serum by ammonium sulphate precipitation followed by antigen affinity chromatography using the immunizing peptide.
Grade:	Verified

Target Details

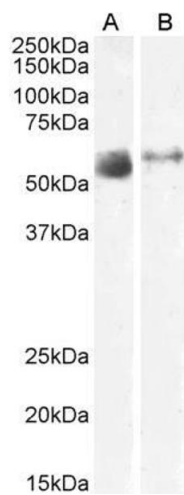
Target:	SLC7A7 (Slc7a7)
Alternative Name:	SLC7A7 (Slc7a7 Products)
Background:	SLC7A7, solute carrier family 7 (amino acid transporter light chain, y+L system), member 7, LAT3, LPI, MOP-2, Y+LAT1, y+LAT-1, Y+L amino acid transporter 1, monocyte amino acid permease 2, solute carrier family 7 (cationic amino acid transporter, y+ syste
Gene ID:	9056
NCBI Accession:	NP_001119577

Application Details

Application Notes:	Western Blot: Approx 55-58 kDa band observed in Human Lung and Skeletal Muscle lysates (calculated MW of 56.0 kDa according to NP_001119577.1. Recommended concentration: 1-3 µg/mL. Peptide ELISA: antibody detection limit dilution 1:128000.
Restrictions:	For Research Use only

Handling

Format:	Liquid
Concentration:	0.5 mg/mL
Buffer:	Supplied at 0.5 mg/mL in Tris saline, 0.02 % sodium azide, pH 7.3 with 0.5 % bovine serum albumin.
Preservative:	Sodium azide
Precaution of Use:	This product contains Sodium azide: a POISONOUS AND HAZARDOUS SUBSTANCE which should be handled by trained staff only.
Handling Advice:	Minimize freezing and thawing.
Storage:	-20 °C
Storage Comment:	Aliquot and store at -20°C, with minimal freeze/thawing. A working aliquot may be refrigerated at 4°C for a few weeks and still remain viable.



Western Blotting

Image 1. ABIN6391414 (2µg/ml) staining of Human Lung (A) and Skeletal Muscle (B) lysate (35µg protein in RIPA buffer). Primary incubation was 1 hour. Detected by chemiluminescence