

Datasheet for ABIN6391415
anti-TBC1D10A antibody (N-Term)[Go to Product page](#)

4 Images

Overview

Quantity:	100 µg
Target:	TBC1D10A
Binding Specificity:	N-Term
Reactivity:	Human
Host:	Goat
Clonality:	Polyclonal
Conjugate:	This TBC1D10A antibody is un-conjugated
Application:	ELISA, Flow Cytometry (FACS), Immunofluorescence (IF)

Product Details

Purpose:	EPI64/TBC1D10A
Sequence:	AKSNGENGPR APA
Isotype:	IgG
Cross-Reactivity:	Human
Purification:	Purified from goat serum by ammonium sulphate precipitation followed by antigen affinity chromatography using the immunizing peptide.
Grade:	Verified

Target Details

Target:	TBC1D10A
---------	----------

Target Details

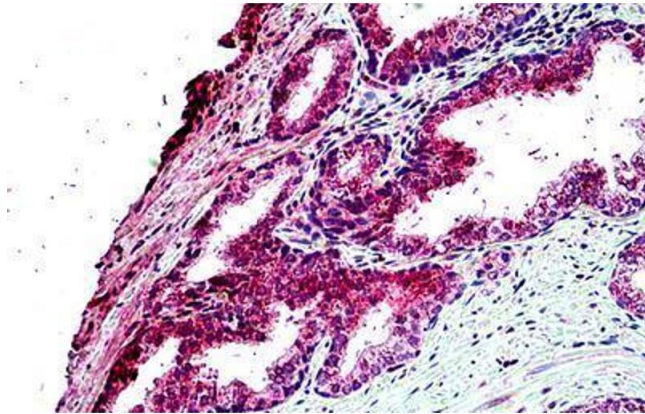
Alternative Name:	TBC1D10A (TBC1D10A Products)
Background:	EPI64, EPI 64, dJ130H16.. TBC1D10, TBC1 domain family member 10A, Rab27A-GAP-alpha, TBC1 domain family member 10A, EBP50-PDZ interactor of 64 kD,
Gene ID:	83874
NCBI Accession:	NP_114143 , NP_001191169
Pathways:	Positive Regulation of Endopeptidase Activity

Application Details

Application Notes:	Peptide ELISA: antibody detection limit dilution 1:2000.
Comment:	Immunofluorescence: Strong expression of the protein seen in the cytoplasm/ plasma membranes and nuclei of MCF7 cells. Recommended concentration: 10µg/ml. Flow Cytometry: Flow cytometric analysis of HEK293 cells. Recom
Restrictions:	For Research Use only

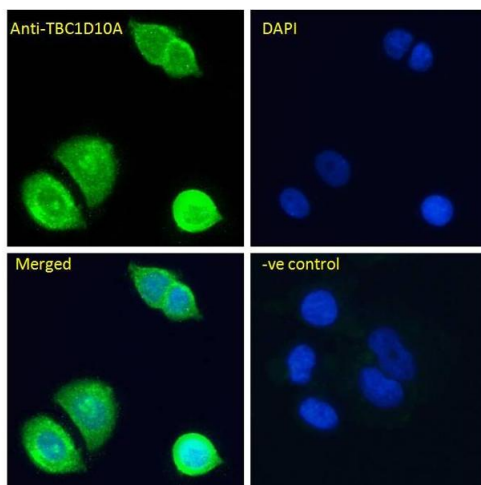
Handling

Format:	Liquid
Concentration:	0.5 mg/mL
Buffer:	Supplied at 0.5 mg/mL in Tris saline, 0.02 % sodium azide, pH 7.3 with 0.5 % bovine serum albumin.
Preservative:	Sodium azide
Precaution of Use:	This product contains Sodium azide: a POISONOUS AND HAZARDOUS SUBSTANCE which should be handled by trained staff only.
Handling Advice:	Minimize freezing and thawing.
Storage:	-20 °C
Storage Comment:	Aliquot and store at -20°C, with minimal freeze/thawing. A working aliquot may be refrigerated at 4°C for a few weeks and still remain viable.



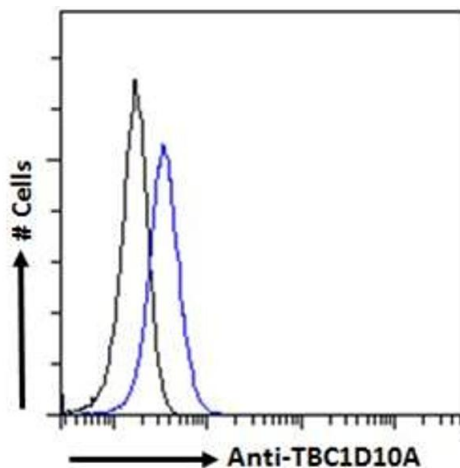
Immunohistochemistry

Image 1. ABIN6391415 (4.75µg/ml) staining of paraffin embedded Human Prostate. Steamed antigen retrieval with citrate buffer pH 6, AP-staining. This data is from a previous batch, not on sale.



Immunofluorescence

Image 2. ABIN6391415 Immunofluorescence analysis of paraformaldehyde fixed MCF7 cells, permeabilized with 0.15% Triton. Primary incubation 1hr (10ug/ml) followed by Alexa Fluor 488 secondary antibody (4ug/ml), showing cytoplasmic/Plasma Membrane and nuclear staining. The nuclear stain is DAPI (blue). Negative control: Unimmunized goat IgG (10ug/ml) followed by Alexa Fluor 488 secondary antibody (2ug/ml).



Flow Cytometry

Image 3. ABIN6391415 Flow cytometric analysis of paraformaldehyde fixed HEK293 cells (blue line), permeabilized with 0.5% Triton. Primary incubation 1hr (10ug/ml) followed by Alexa Fluor 488 secondary antibody (1ug/ml). IgG control: Unimmunized goat IgG (black line) followed by Alexa Fluor 488 secondary antibody.

Please check the [product details page](#) for more images. Overall 4 images are available for ABIN6391415.