

Datasheet for ABIN650616
anti-IGF2 antibody (AA 39-68)

5 Images

[Go to Product page](#)

Overview

Quantity:	200 µL
Target:	IGF2
Binding Specificity:	AA 39-68
Reactivity:	Human, Mouse
Host:	Rabbit
Clonality:	Polyclonal
Conjugate:	This IGF2 antibody is un-conjugated
Application:	Western Blotting (WB), Flow Cytometry (FACS), Immunohistochemistry (Paraffin-embedded Sections) (IHC (p))

Product Details

Immunogen:	This IGF2 antibody is generated from rabbits immunized with a KLH conjugated synthetic peptide between 39-68 amino acids from the Central region of human IGF2.
Clone:	RB18750
Isotype:	Ig Fraction
Purification:	This antibody is purified through a protein A column, followed by peptide affinity purification.

Target Details

Target:	IGF2
Alternative Name:	IGF2 (IGF2 Products)

Target Details

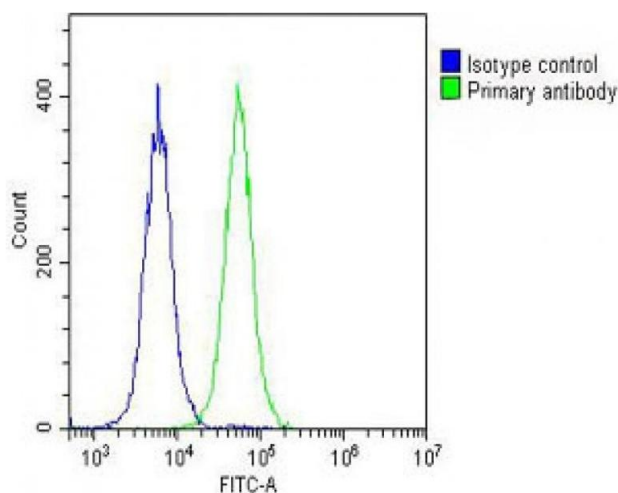
Background:	This gene encodes a member of the insulin family of polypeptide growth factors, which are involved in development and growth. It is an imprinted gene, expressed only from the paternal allele, and epigenetic changes at this locus are associated with Wilms tumour, Beckwith-Wiedemann syndrome, rhabdomyosarcoma, and Silver-Russell syndrome. A read-through INS-IGF2 gene exists, whose 5' region overlaps the INS gene and the 3' region overlaps this gene. Alternatively spliced transcript variants encoding different isoforms have been found for this gene.
Molecular Weight:	20140
Gene ID:	3481
NCBI Accession:	NP_000603 , NP_001007140 , NP_001121070
UniProt:	P01344
Pathways:	Hormone Activity , Regulation of Hormone Metabolic Process , Regulation of Hormone Biosynthetic Process , Regulation of Carbohydrate Metabolic Process , Activated T Cell Proliferation

Application Details

Application Notes:	WB: 1:2000. WB: 1:2000. WB: 1:1000. IHC-P: 1:50~100. FC: 1:25
Restrictions:	For Research Use only

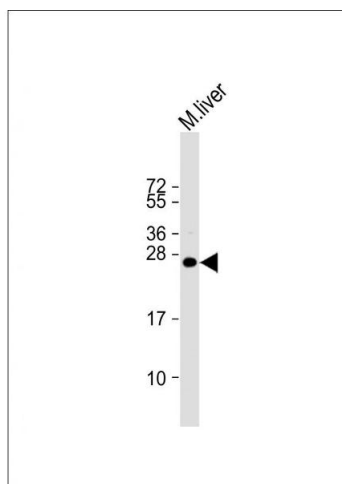
Handling

Format:	Liquid
Buffer:	Purified polyclonal antibody supplied in PBS with 0.09 % (W/V) sodium azide.
Preservative:	Sodium azide
Precaution of Use:	This product contains Sodium azide: a POISONOUS AND HAZARDOUS SUBSTANCE which should be handled by trained staff only.
Storage:	4 °C,-20 °C
Storage Comment:	Maintain refrigerated at 2-8 °C for up to 6 months. For long term storage store at -20 °C in small aliquots to prevent freeze-thaw cycles.
Expiry Date:	6 months



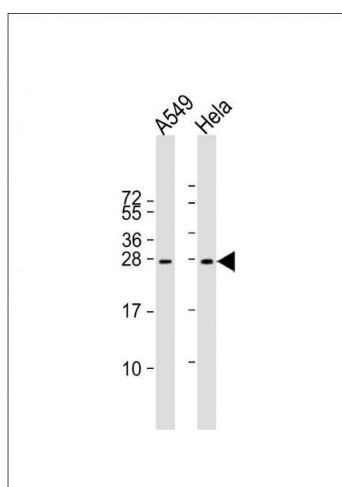
Flow Cytometry

Image 1. Overlay histogram showing HeLa cells stained with (ABIN650616 and ABIN2844786) (green line). The cells were fixed with 2 % paraformaldehyde (10 min) and then permeabilized with 90 % methanol for 10 min. The cells were then incubated in 2 % bovine serum albumin to block non-specific protein-protein interactions followed by the antibody ((ABIN650616 and ABIN2844786), 1:25 dilution) for 60 min at 37 °C. The secondary antibody used was Goat Anti-Rabbit IgG, DyLight® 488 Conjugated Highly Cross-Adsorbed(OH191631) at 1/200 dilution for 40 min at 37 °C. Isotype control antibody (blue line) was rabbit IgG (1 μ g/ 1×10^6 cells) used under the same conditions. Acquisition of >10,000 events was performed.



Western Blotting

Image 2. Anti-IGF2 Antibody (Center R54) at 1:2000 dilution + mouse liver lysate Lysates/proteins at 20 μ g per lane. Secondary Goat Anti-Rabbit IgG, (H+L), Peroxidase conjugated at 1/10000 dilution. Predicted band size : 20 kDa Blocking/Dilution buffer: 5 % NFDM/TBST.



Western Blotting

Image 3. All lanes : Anti-IGF2 Antibody (Center R54) at 1:2000 dilution Lane 1: A549 whole cell lysate Lane 2: HeLa whole cell lysate Lysates/proteins at 20 μ g per lane. Secondary Goat Anti-Rabbit IgG, (H+L), Peroxidase conjugated at 1/10000 dilution. Predicted band size : 20 kDa Blocking/Dilution buffer: 5 % NFDM/TBST.

Please check the [product details page](#) for more images. Overall 5 images are available for ABIN650616.