

Datasheet for ABIN650617
anti-GPX3 antibody (AA 93-123)[Go to Product page](#)

4 Images

Overview

Quantity:	400 µL
Target:	GPX3
Binding Specificity:	AA 93-123
Reactivity:	Mouse, Human
Host:	Rabbit
Clonality:	Polyclonal
Conjugate:	This GPX3 antibody is un-conjugated
Application:	Western Blotting (WB), Immunohistochemistry (Paraffin-embedded Sections) (IHC (p))

Product Details

Immunogen:	This GPX3 antibody is generated from rabbits immunized with a KLH conjugated synthetic peptide between 93-123 amino acids from the Central region of human GPX3.
Clone:	RB18898
Isotype:	Ig Fraction
Purification:	This antibody is purified through a protein A column, followed by peptide affinity purification.

Target Details

Target:	GPX3
Alternative Name:	GPX3 (GPX3 Products)
Background:	This gene product belongs to the glutathione peroxidase family, which functions in the

Target Details

detoxification of hydrogen peroxide. It contains a selenocysteine (Sec) residue at its active site. The selenocysteine is encoded by the UGA codon, which normally signals translation termination. The 3' UTR of Sec-containing genes have a common stem-loop structure, the sec insertion sequence (SECIS), which is necessary for the recognition of UGA as a Sec codon rather than as a stop signal.

Molecular Weight: 25552

Gene ID: 2878

NCBI Accession: [NP_002075](#)

UniProt: [P22352](#)

Pathways: [Thyroid Hormone Synthesis](#)

Application Details

Application Notes: WB: 1:1000. WB: 1:1000. WB: 1:1000. IHC-P: 1:50~100

Restrictions: For Research Use only

Handling

Format: Liquid

Buffer: Purified polyclonal antibody supplied in PBS with 0.09 % (W/V) sodium azide.

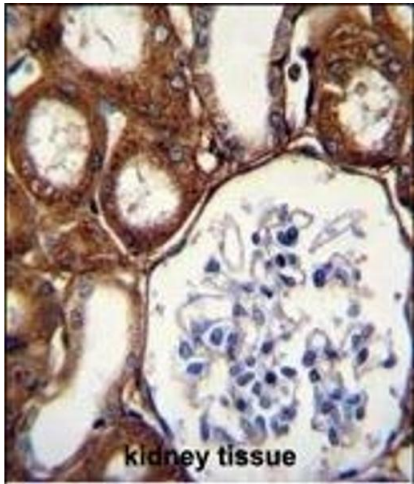
Preservative: Sodium azide

Precaution of Use: This product contains Sodium azide: a POISONOUS AND HAZARDOUS SUBSTANCE which should be handled by trained staff only.

Storage: 4 °C, -20 °C

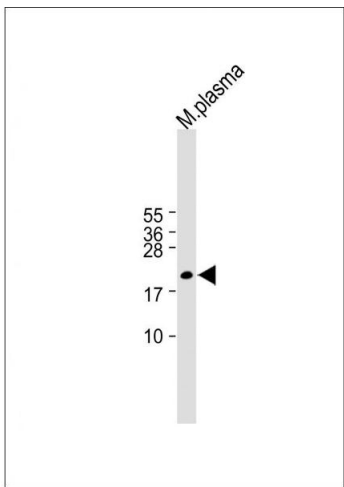
Storage Comment: Maintain refrigerated at 2-8 °C for up to 6 months. For long term storage store at -20 °C in small aliquots to prevent freeze-thaw cycles.

Expiry Date: 6 months



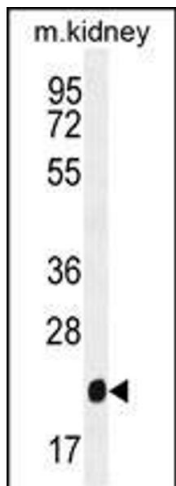
Immunohistochemistry (Paraffin-embedded Sections)

Image 1. GPX3 Antibody (Center) (ABIN650617 and ABIN2844787) immunohistochemistry analysis in formalin fixed and paraffin embedded human kidney tissue followed by peroxidase conjugation of the secondary antibody and DAB staining. This data demonstrates the use of GPX3 Antibody (Center) for immunohistochemistry. Clinical relevance has not been evaluated.



Western Blotting

Image 2. All lanes : Anti-GPX3 Antibody (Center) at 1:1000 dilution Lane 1: M. plasma lysate Lysates/proteins at 20 µg per lane. Secondary Goat Anti-Rabbit IgG, (H+L), Peroxidase conjugated at 1/10000 dilution. Observed band size : 22 kDa Blocking/Dilution buffer: 5 % NFDM/TBST.



Western Blotting

Image 3. GPX3 Antibody (Center) (ABIN650617 and ABIN2844787) western blot analysis in mouse kidney tissue lysates (35 µg/lane). This demonstrates the GPX3 antibody detected the GPX3 protein (arrow).

Please check the [product details page](#) for more images. Overall 4 images are available for ABIN650617.