

Datasheet for ABIN650618

anti-SUMO1 antibody

5 Images

[Go to Product page](#)

Overview

Quantity:	400 µL
Target:	SUMO1
Reactivity:	Human, Rat
Host:	Rabbit
Clonality:	Polyclonal
Conjugate:	This SUMO1 antibody is un-conjugated
Application:	Western Blotting (WB), Immunofluorescence (IF), Flow Cytometry (FACS), Immunohistochemistry (Paraffin-embedded Sections) (IHC (p))

Product Details

Immunogen:	This SUMO1 antibody is generated from rabbits immunized with human SUMO1 recombinant protein.
Clone:	RB23143
Isotype:	Ig Fraction
Purification:	This antibody is purified through a protein A column, followed by peptide affinity purification.

Target Details

Target:	SUMO1
Alternative Name:	SUMO1 (SUMO1 Products)
Background:	Covalent modification of target lysines by SUMO (small ubiquitin-like modifier) modulates processes such as protein localization, transcription, nuclear transport, mitosis, DNA replication

Target Details

and repair, signal transduction, and viral reproduction. SUMO does not seem to be involved in protein degradation and may in fact function as an antagonist of ubiquitin in the degradation process. The SUMO family consists of SUMO1 and closely related homologs SUMO2, SUMO3, and SUMO4. Sumoylation has been shown to regulate a wide range of proteins, including MDM2, PIAS, PML, RanGAP1, RanBP2, p53, p73, HIPK2, TEL, c-Jun, Fas, Daxx, TNFRI, Topo-I, Topo-II, PARK2, WRN, Sp100, I κ B-alpha, Androgen receptor (AR), GLUT1/4, CaMK, DNMT3B, TDG, HIF1A, CHD3, EXOSC9, RAD51, and viral targets such as CMV-IE1/2, EBV-BZLF1, and HPV/BPV-E1.

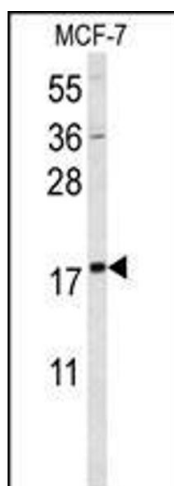
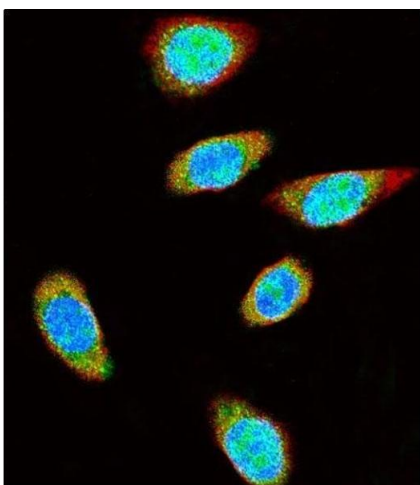
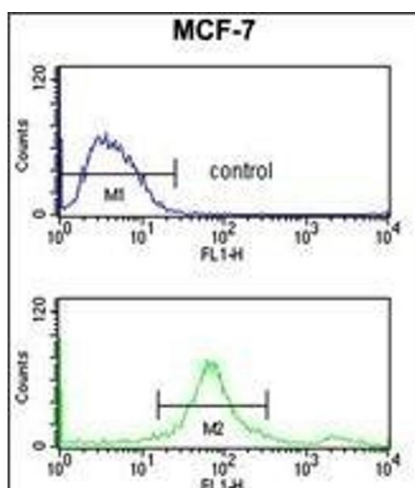
Molecular Weight:	11557
Gene ID:	7341
NCBI Accession:	NP_001005781 , NP_001005782 , NP_003343
UniProt:	P63165
Pathways:	M Phase , Positive Regulation of Endopeptidase Activity , Protein targeting to Nucleus , Ubiquitin Proteasome Pathway

Application Details

Application Notes:	IF: 1:10~50. WB: 1:1000. WB: 1:8000. IHC-P: 1:50~100. FC: 1:10~50
Restrictions:	For Research Use only

Handling

Format:	Liquid
Buffer:	Purified polyclonal antibody supplied in PBS with 0.09 % (W/V) sodium azide.
Preservative:	Sodium azide
Precaution of Use:	This product contains Sodium azide: a POISONOUS AND HAZARDOUS SUBSTANCE which should be handled by trained staff only.
Storage:	4 °C,-20 °C
Storage Comment:	Maintain refrigerated at 2-8 °C for up to 6 months. For long term storage store at -20 °C in small aliquots to prevent freeze-thaw cycles.
Expiry Date:	6 months



Flow Cytometry

Image 1. SUMO1 Antibody f flow cytometry analysis of MCF-7 cells (bottom histogram) compared to a negative control cell (top histogram). FITC-conjugated goat-anti-rabbit secondary antibodies were used for the analysis.

Immunofluorescence

Image 2. Confocal immunofluorescent analysis of SUMO1 Antibody f with cell followed by Alexa Fluor 488-conjugated goat anti-rabbit IgG (green). Actin filaments have been labeled with Alexa Fluor 555 phalloidin (red). DAPI was used to stain the cell nuclear (blue).

Western Blotting

Image 3. Western blot analysis of SUMO1 Antibody f in MCF-7 cell line lysates (35 µg/lane). SUMO1 (arrow) was detected using the purified Pab.

Please check the [product details page](#) for more images. Overall 5 images are available for ABIN650618.