

Datasheet for ABIN650622
anti-PTRH2 antibody (AA 80-110)[Go to Product page](#)

2 Images

Overview

Quantity:	400 µL
Target:	PTRH2
Binding Specificity:	AA 80-110
Reactivity:	Human
Host:	Rabbit
Clonality:	Polyclonal
Conjugate:	This PTRH2 antibody is un-conjugated
Application:	Western Blotting (WB), Immunohistochemistry (Paraffin-embedded Sections) (IHC (p))

Product Details

Immunogen:	This Bit1 antibody is generated from rabbits immunized with a KLH conjugated synthetic peptide between 80-110 amino acids from the Central region of human Bit1.
Clone:	RB06095
Isotype:	Ig Fraction
Purification:	This antibody is purified through a protein A column, followed by peptide affinity purification.

Target Details

Target:	PTRH2
Alternative Name:	Bit1 (PTRH2 Products)
Background:	Adhesion to extracellular matrix regulates cell survival via integrin engagement and cell

Target Details

spreading. Anoikis is the molecular mechanism of apoptosis induced by integrin detachment. A role for Bit1 (Bcl-2 inhibitor of transcription 1) has been identified in this process. Bit1 is a mitochondrial protein released into the cytoplasm upon onset of apoptosis where it forms a complex with AES, a small Groucho/transducin-like enhancer of split (TLE) protein and induces caspase-independent apoptosis. AES and TLE proteins are transcriptional co-repressors that play important roles in neurogenesis, segmentation, and sex determination. Bit1-AES complexes may switch off a survival-promoting gene transcription program controlled by TLE. Apoptosis of Bit1/AES transfected cells is inhibited when cells are permitted to attach to fibronectin through the alpha-beta integrin, suggesting that the contribution of the Bit1-AES pathway to anoikis is regulated by integrins.

Molecular Weight: 19194

Gene ID: 51651

NCBI Accession: [NP_057161](#)

UniProt: [Q9Y3E5](#)

Application Details

Application Notes: WB: 1:1000. IHC-P: 1:10~50

Restrictions: For Research Use only

Handling

Format: Liquid

Buffer: Purified polyclonal antibody supplied in PBS with 0.09 % (W/V) sodium azide.

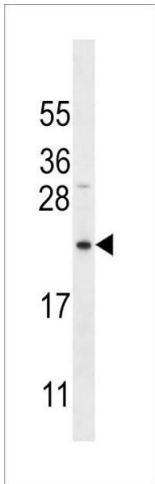
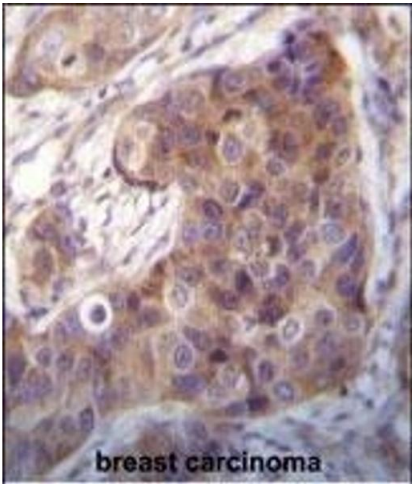
Preservative: Sodium azide

Precaution of Use: This product contains Sodium azide: a POISONOUS AND HAZARDOUS SUBSTANCE which should be handled by trained staff only.

Storage: 4 °C, -20 °C

Storage Comment: Maintain refrigerated at 2-8 °C for up to 6 months. For long term storage store at -20 °C in small aliquots to prevent freeze-thaw cycles.

Expiry Date: 6 months



Immunohistochemistry (Paraffin-embedded Sections)

Image 1. Bit1 Antibody (Center) (ABIN650622 and ABIN2846297) immunohistochemistry analysis in formalin fixed and paraffin embedded human breast carcinoma followed by peroxidase conjugation of the secondary antibody and DAB staining. This data demonstrates the use of Bit1 Antibody (Center) for immunohistochemistry. Clinical relevance has not been evaluated.

Western Blotting

Image 2. Bit1 Antibody (K95) (ABIN650622 and ABIN2846297) western blot analysis in MDA-M cell line lysates (35 µg/lane). This demonstrates the Bit1 antibody detected the Bit1 protein (arrow).