

Datasheet for ABIN650665  
**anti-AGO2 antibody (N-Term)**[Go to Product page](#)

## 3 Images

## Overview

Quantity:	400 µL
Target:	AGO2
Binding Specificity:	AA 27-59, N-Term
Reactivity:	Human
Host:	Rabbit
Clonality:	Polyclonal
Conjugate:	This AGO2 antibody is un-conjugated
Application:	Western Blotting (WB), Flow Cytometry (FACS), Immunohistochemistry (Paraffin-embedded Sections) (IHC (p))

## Product Details

Immunogen:	This EIF2C2 antibody is generated from rabbits immunized with a KLH conjugated synthetic peptide between 27-59 amino acids from the N-terminal region of human EIF2C2.
Clone:	RB8013
Isotype:	Ig Fraction
Predicted Reactivity:	B, Rb, Rat
Purification:	This antibody is purified through a protein A column, followed by peptide affinity purification.

## Target Details

Target:	AGO2
---------	------

## Target Details

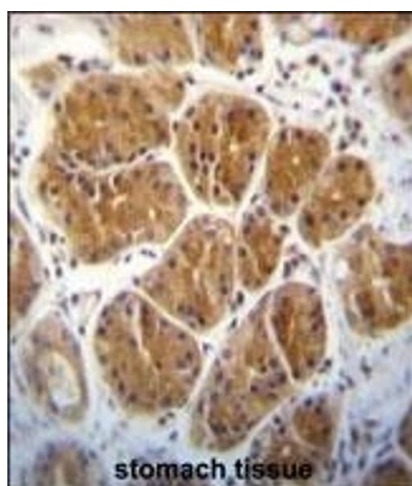
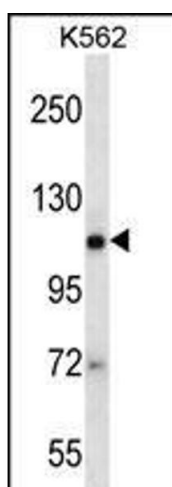
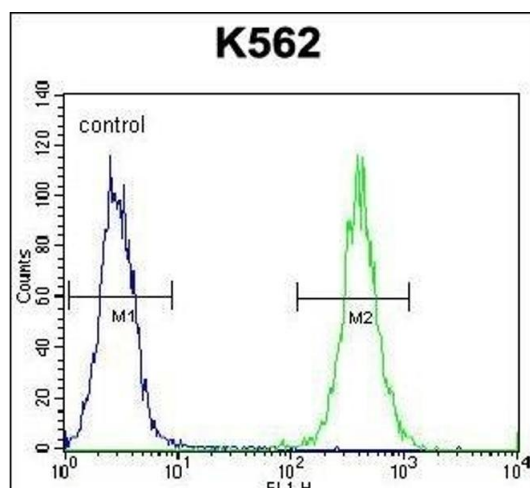
Alternative Name:	EIF2C2 ( <a href="#">AGO2 Products</a> )
Background:	EIF2C2 is a member of the Argonaute family of proteins which play a role in RNA interference. The encoded protein is highly basic, and contains a PAZ domain and a PIWI domain. It may interact with dicer1 and play a role in short-interfering-RNA-mediated gene silencing.
Molecular Weight:	97304
Gene ID:	239528
NCBI Accession:	<a href="#">NP_694818</a>
UniProt:	<a href="#">Q8CJG0</a>
Pathways:	<a href="#">Fc-epsilon Receptor Signaling Pathway</a> , <a href="#">Regulatory RNA Pathways</a> , <a href="#">EGFR Signaling Pathway</a> , <a href="#">Neurotrophin Signaling Pathway</a> , <a href="#">Ribonucleoprotein Complex Subunit Organization</a>

## Application Details

Application Notes:	WB: 1:1000. IHC-P: 1:10~50. FC: 1:10~50
Restrictions:	For Research Use only

## Handling

Format:	Liquid
Buffer:	Purified polyclonal antibody supplied in PBS with 0.09 % (W/V) sodium azide.
Preservative:	Sodium azide
Precaution of Use:	This product contains Sodium azide: a POISONOUS AND HAZARDOUS SUBSTANCE which should be handled by trained staff only.
Storage:	4 °C, -20 °C
Storage Comment:	Maintain refrigerated at 2-8 °C for up to 6 months. For long term storage store at -20 °C in small aliquots to prevent freeze-thaw cycles.
Expiry Date:	6 months



### Flow Cytometry

**Image 1.** EIF2C2 Antibody (N-term) (ABIN650665 and ABIN2838088) flow cytometric analysis of K562 cells (right histogram) compared to a negative control cell (left histogram). FITC-conjugated goat-anti-rabbit secondary antibodies were used for the analysis.

### Western Blotting

**Image 2.** EIF2C2 Antibody (N-term Q41) (ABIN650665 and ABIN2838088) western blot analysis in K562 cell line lysates (35 µg/lane). This demonstrates the EIF2C2 antibody detected the EIF2C2 protein (arrow).

### Immunohistochemistry (Paraffin-embedded Sections)

**Image 3.** EIF2C2 Antibody (N-term) (ABIN650665 and ABIN2838088) immunohistochemistry analysis in formalin fixed and paraffin embedded human stomach tissue followed by peroxidase conjugation of the secondary antibody and DAB staining. This data demonstrates the use of EIF2C2 Antibody (N-term) for immunohistochemistry. Clinical relevance has not been evaluated.