

Datasheet for ABIN650692

anti-MAP2 antibody

4 Images

[Go to Product page](#)

Overview

Quantity:	400 µL
Target:	MAP2
Reactivity:	Human
Host:	Rabbit
Clonality:	Polyclonal
Conjugate:	This MAP2 antibody is un-conjugated
Application:	Western Blotting (WB), Immunohistochemistry (Paraffin-embedded Sections) (IHC (p)), Flow Cytometry (FACS)

Product Details

Immunogen:	This MAP2 antibody is generated from rabbits immunized with MAP2 recombinant protein.
Clone:	RB22664
Isotype:	Ig Fraction
Purification:	This antibody is purified through a protein A column, followed by peptide affinity purification.

Target Details

Target:	MAP2
Alternative Name:	MAP2 (MAP2 Products)
Background:	Synonyms: Microtubule-associated protein 2, MAP-2, MAP2
Molecular Weight:	199526 DA

Target Details

Gene ID: 4133

UniProt: [P11137](#)

Application Details

Application Notes: WB = 1:1000, IHC (p) = 1:50-100, FACS = 1:10-50

Restrictions: For Research Use only

Handling

Format: Liquid

Concentration: 0.28 mg/mL

Buffer: PBS with 0.09 % (W/V) sodium azide

Preservative: Sodium azide

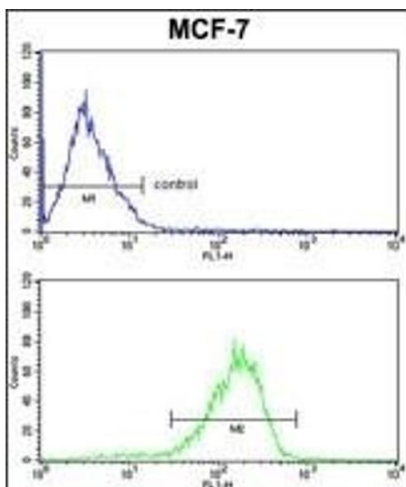
Precaution of Use: This product contains sodium azide: a POISONOUS AND HAZARDOUS SUBSTANCE which should be handled by trained staff only.

Storage: 4 °C/-20 °C

Storage Comment: Maintain refrigerated at 2-8 °C for up to 6 months. For long term storage store at -20 °C in small aliquots to prevent freeze-thaw cycles.

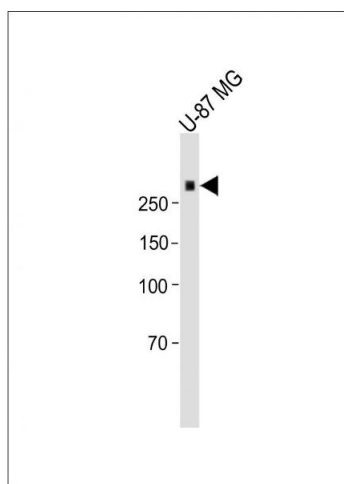
Expiry Date: 6 months

Images



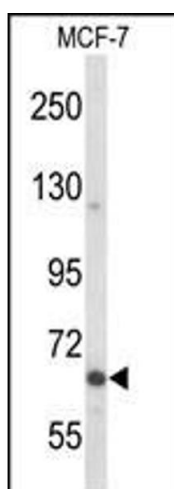
Flow Cytometry

Image 1. P2 Antibody FC analysis of MCF-7 cells (bottom histogram) compared to a negative control cell (top histogram). FITC-conjugated goat-anti-rabbit secondary antibodies were used for the analysis.



Western Blotting

Image 2. All lanes : Anti-P2 Antibody at 1:1000 dilution+ U-87 MG Cell lysate Lysates/proteins at 20 µg per lane. Secondary Goat Anti-rabbit IgG, (H+L), Peroxidase conjugated (AS) at 1/15000 dilution. Observed band size : 280 kDa Blocking/Dilution buffer: 5 % NFDM/TBST.



Western Blotting

Image 3. Western blot analysis of P2 Antibody in MCF-7 cell line lysates (35 µg/lane). P2 (arrow) was detected using the purified Pab.

Please check the [product details page](#) for more images. Overall 4 images are available for ABIN650692.