



[Go to Product page](#)

Datasheet for ABIN650698

anti-UBE2H antibody (C-Term)

1 Image

Overview

Quantity:	400 µL
Target:	UBE2H
Binding Specificity:	AA 153-183, C-Term
Reactivity:	Human
Host:	Rabbit
Clonality:	Polyclonal
Conjugate:	This UBE2H antibody is un-conjugated
Application:	Western Blotting (WB)

Product Details

Immunogen:	This UBE2H antibody is generated from rabbits immunized with a KLH conjugated synthetic peptide between 153-183 amino acids from the C-terminal region of human UBE2H.
Clone:	RB4171
Isotype:	Ig Fraction
Predicted Reactivity:	B, M
Purification:	This antibody is purified through a protein A column, followed by peptide affinity purification.

Target Details

Target:	UBE2H
Alternative Name:	UBE2H (UBE2H Products)

Target Details

Background: The modification of proteins with ubiquitin is an important cellular mechanism for targeting abnormal or short-lived proteins for degradation. Ubiquitination involves at least three classes of enzymes: ubiquitin-activating enzymes, or E1s, ubiquitin-conjugating enzymes, or E2s, and ubiquitin-protein ligases, or E3s. UBE2H is a member of the E2 ubiquitin-conjugating enzyme family. The encoded protein sequence is 100 % identical to the mouse homolog and 98 % identical to the frog and zebrafish homologs, which indicates that this enzyme is highly conserved in eukaryotes.

Molecular Weight: 20655

Gene ID: 7328

NCBI Accession: [NP_001189427](#), [NP_003335](#), [NP_874356](#)

UniProt: [P62256](#)

Application Details

Application Notes: WB: 1:1000

Restrictions: For Research Use only

Handling

Format: Liquid

Buffer: Purified polyclonal antibody supplied in PBS with 0.09 % (W/V) sodium azide.

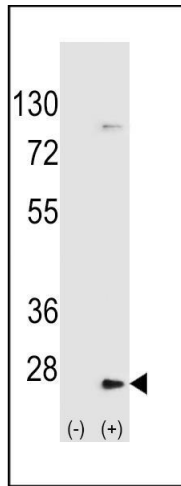
Preservative: Sodium azide

Precaution of Use: This product contains Sodium azide: a POISONOUS AND HAZARDOUS SUBSTANCE which should be handled by trained staff only.

Storage: 4 °C, -20 °C

Storage Comment: Maintain refrigerated at 2-8 °C for up to 6 months. For long term storage store at -20 °C in small aliquots to prevent freeze-thaw cycles.

Expiry Date: 6 months



Western Blotting

Image 1. Western blot analysis of UBE2H (arrow) using rabbit polyclonal UBE2H Antibody (ABIN650698 and ABIN2839162). 293 cell lysates (2 µg/lane) either nontransfected (Lane 1) or transiently transfected (Lane 2) with the UBE2H gene.