

Datasheet for ABIN650714
anti-SEMA6A antibody (N-Term)[Go to Product page](#)

1 Image

Overview

| | |
|----------------------|---------------------------------------|
| Quantity: | 400 µL |
| Target: | SEMA6A |
| Binding Specificity: | AA 29-57, N-Term |
| Reactivity: | Human |
| Host: | Rabbit |
| Clonality: | Polyclonal |
| Conjugate: | This SEMA6A antibody is un-conjugated |
| Application: | Western Blotting (WB) |

Product Details

| | |
|-----------------------|--|
| Immunogen: | This SEMA6A antibody is generated from rabbits immunized with a KLH conjugated synthetic peptide between 29-57 amino acids from the N-terminal region of human SEMA6A. |
| Clone: | RB21218 |
| Isotype: | Ig Fraction |
| Predicted Reactivity: | M |
| Purification: | This antibody is purified through a protein A column, followed by peptide affinity purification. |

Target Details

| | |
|-------------------|--|
| Target: | SEMA6A |
| Alternative Name: | SEMA6A (SEMA6A Products) |

Target Details

Background: SEMA6A belongs to a subfamily characterized by an extracellular semaphorin domain, a transmembrane domain, and a long cytoplasmic tail. Members of this class can repel sympathetic and dorsal root ganglion axons in vitro, consistent with a traditional role as guidance signals. However, the length of the cytoplasmic tail, which includes an EVL-binding site in SEMA6A and an Src-binding site in SEMA6B, suggests that these semaphorins may also function as receptors. SEMA6A is expressed in developing neural tissue and is required for proper development of the thalamocortical projection. SEMA6A directly links the Ena/VASP and the semaphorin protein families since the SEMA6A protein is capable of selective binding to the protein EVL (Ena/VASP-like protein).

Molecular Weight: 114395

Gene ID: 57556

NCBI Accession: [NP_065847](#)

UniProt: [Q9H2E6](#)

Application Details

Application Notes: WB: 1:1000

Restrictions: For Research Use only

Handling

Format: Liquid

Buffer: Purified polyclonal antibody supplied in PBS with 0.09 % (W/V) sodium azide.

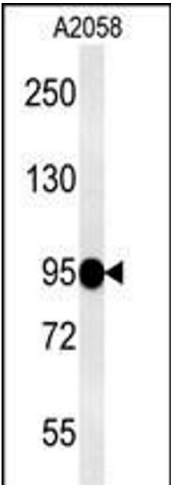
Preservative: Sodium azide

Precaution of Use: This product contains Sodium azide: a POISONOUS AND HAZARDOUS SUBSTANCE which should be handled by trained staff only.

Storage: 4 °C, -20 °C

Storage Comment: Maintain refrigerated at 2-8 °C for up to 6 months. For long term storage store at -20 °C in small aliquots to prevent freeze-thaw cycles.

Expiry Date: 6 months



Western Blotting

Image 1. SEA Antibody (N-term) (ABIN650714 and ABIN2839369) western blot analysis in cell line lysates (15 µg/lane). This demonstrates the SEA antibody detected the SEA protein (arrow).