

Datasheet for ABIN650719
anti-ZIC3 antibody (AA 239-267)[Go to Product page](#)

4 Images

Overview

Quantity:	400 µL
Target:	ZIC3
Binding Specificity:	AA 239-267
Reactivity:	Human
Host:	Rabbit
Clonality:	Polyclonal
Conjugate:	This ZIC3 antibody is un-conjugated
Application:	Western Blotting (WB), Immunohistochemistry (Paraffin-embedded Sections) (IHC (p)), Flow Cytometry (FACS)

Product Details

Immunogen:	This ZIC3 antibody is generated from rabbits immunized with a KLH conjugated synthetic peptide between 239-267 amino acids from the Central region of human ZIC3.
Clone:	RB15116
Isotype:	Ig Fraction
Purification:	This antibody is prepared by Saturated Ammonium Sulfate (SAS) precipitation followed by dialysis against PBS.

Target Details

Target:	ZIC3
Alternative Name:	ZIC3 (ZIC3 Products)

Target Details

Background: This gene encodes a member of the ZIC family of C2H2-type zinc finger proteins. This nuclear protein probably functions as a transcription factor in early stages of left-right body axis formation. Mutations in this gene cause X-linked visceral heterotaxy, which includes congenital heart disease and left-right axis defects in organs.

Molecular Weight: 50569

Gene ID: 7547

NCBI Accession: [NP_003404](#)

UniProt: [O60481](#)

Application Details

Application Notes: WB: 1:1000. WB: 1:1000. IHC-P: 1:50~100. FC: 1:10~50

Restrictions: For Research Use only

Handling

Format: Liquid

Buffer: Purified polyclonal antibody supplied in PBS with 0.09 % (W/V) sodium azide.

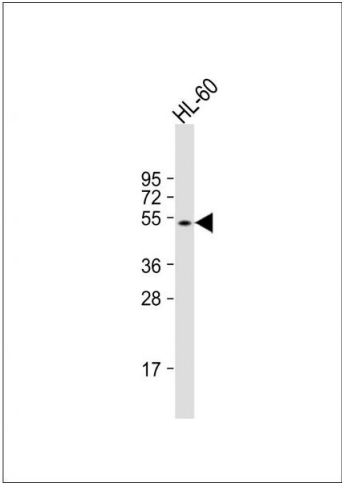
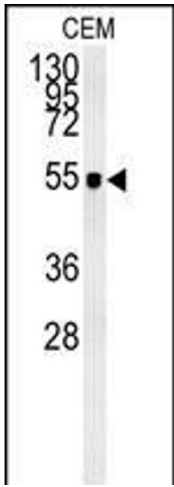
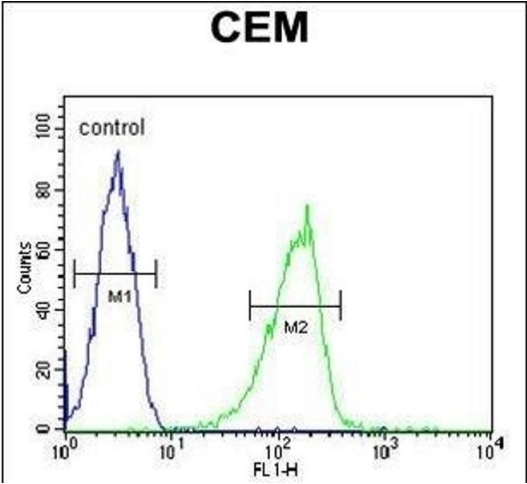
Preservative: Sodium azide

Precaution of Use: This product contains Sodium azide: a POISONOUS AND HAZARDOUS SUBSTANCE which should be handled by trained staff only.

Storage: 4 °C,-20 °C

Storage Comment: Maintain refrigerated at 2-8 °C for up to 6 months. For long term storage store at -20 °C in small aliquots to prevent freeze-thaw cycles.

Expiry Date: 6 months



Flow Cytometry

Image 1. ZIC3 Antibody (Center) (ABIN650719 and ABIN2839389) flow cytometric analysis of CEM cells (right histogram) compared to a negative control cell (left histogram). FITC-conjugated goat-anti-rabbit secondary antibodies were used for the analysis.

Western Blotting

Image 2. ZIC3 Antibody (Center) (ABIN650719 and ABIN2839389) western blot analysis in CEM cell line lysates (35 µg/lane). This demonstrates the ZIC3 antibody detected the ZIC3 protein (arrow).

Western Blotting

Image 3. Anti-ZIC3 Antibody (Center) at 1:1000 dilution + HL-60 whole cell lysate Lysates/proteins at 20 µg per lane. Secondary Goat Anti-Rabbit IgG, (H+L), Peroxidase conjugated at 1/10000 dilution. Predicted band size : 51 kDa Blocking/Dilution buffer: 5 % NFDM/TBST.

Please check the [product details page](#) for more images. Overall 4 images are available for ABIN650719.