

Datasheet for ABIN650726
anti-M6PR antibody (C-Term)

3 Images

[Go to Product page](#)

Overview

Quantity:	400 µL
Target:	M6PR
Binding Specificity:	AA 230-260, C-Term
Reactivity:	Human
Host:	Rabbit
Clonality:	Polyclonal
Conjugate:	This M6PR antibody is un-conjugated
Application:	Western Blotting (WB), Immunofluorescence (IF), Flow Cytometry (FACS)

Product Details

Immunogen:	This M6PR antibody is generated from rabbits immunized with a KLH conjugated synthetic peptide between 230-260 amino acids from the C-terminal region of human M6PR.
Clone:	RB15078
Isotype:	Ig Fraction
Predicted Reactivity:	B, M
Purification:	This antibody is prepared by Saturated Ammonium Sulfate (SAS) precipitation followed by dialysis against PBS.

Target Details

Target:	M6PR
---------	------

Target Details

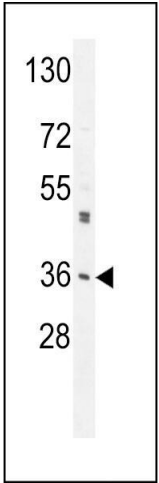
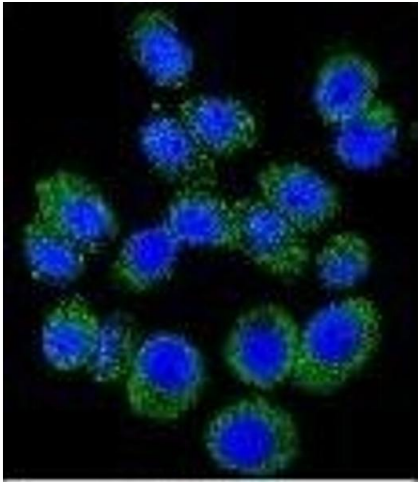
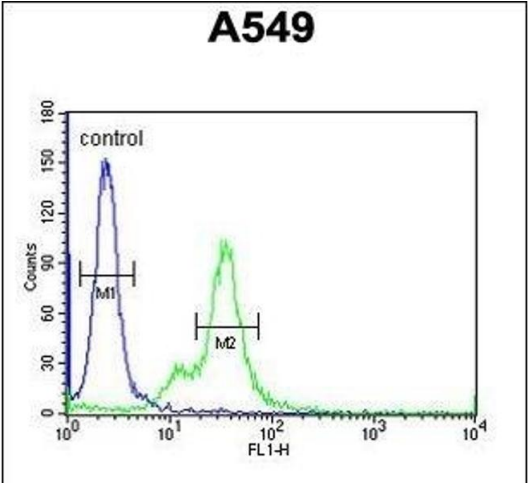
Alternative Name:	M6PR (M6PR Products)
Background:	The protein encoded by this gene is a receptor for mannose-6-phosphate groups on lysosomal enzymes. The receptor forms a homodimer or homotetramer for intracellular targeting of lysosomal enzymes and export of newly synthesized lysosomal enzymes into the cell secretions. The receptor is an integral membrane protein which localizes to the trans-Golgi reticulum, endosomes, and the plasma membrane.
Molecular Weight:	30993
Gene ID:	4074
NCBI Accession:	NP_002346
UniProt:	P20645

Application Details

Application Notes:	IF: 1:10~50. WB: 1:1000. FC: 1:10~50
Restrictions:	For Research Use only

Handling

Format:	Liquid
Buffer:	Purified polyclonal antibody supplied in PBS with 0.09 % (W/V) sodium azide.
Preservative:	Sodium azide
Precaution of Use:	This product contains Sodium azide: a POISONOUS AND HAZARDOUS SUBSTANCE which should be handled by trained staff only.
Storage:	4 °C, -20 °C
Storage Comment:	Maintain refrigerated at 2-8 °C for up to 6 months. For long term storage store at -20 °C in small aliquots to prevent freeze-thaw cycles.
Expiry Date:	6 months



Flow Cytometry

Image 1. M6PR Antibody (C-term) (ABIN650726 and ABIN2839414) flow cytometric analysis of A549 cells (right histogram) compared to a negative control cell (left histogram). FITC-conjugated goat-anti-rabbit secondary antibodies were used for the analysis.

Immunofluorescence

Image 2. Confocal immunofluorescent analysis of M6PR Antibody (C-term) (ABIN650726 and ABIN2839414) with A549 cell followed by Alexa Fluor 488-conjugated goat anti-rabbit IgG (green). DI was used to stain the cell nuclear (blue).

Western Blotting

Image 3. M6PR Antibody (C-term) (ABIN650726 and ABIN2839414) western blot analysis in A549 cell line lysates (35 µg/lane). This demonstrates the M6PR antibody detected the M6PR protein (arrow).