

Datasheet for ABIN650728

anti-FOXP3 antibody (AA 155-182)[Go to Product page](#)**2** Images

Overview

Quantity:	400 µL
Target:	FOXP3
Binding Specificity:	AA 155-182
Reactivity:	Human
Host:	Rabbit
Clonality:	Polyclonal
Conjugate:	This FOXP3 antibody is un-conjugated
Application:	Western Blotting (WB), Flow Cytometry (FACS)

Product Details

Immunogen:	This FOXP3 antibody is generated from rabbits immunized with a KLH conjugated synthetic peptide between 155-182 amino acids from the Central region of human FOXP3.
Clone:	RB16851
Isotype:	Ig Fraction
Purification:	This antibody is purified through a protein A column, followed by peptide affinity purification.

Target Details

Target:	FOXP3
Alternative Name:	FOXP3 (FOXP3 Products)
Background:	FOXP3 is a member of the forkhead/winged-helix family of transcriptional regulators. Defects in

Target Details

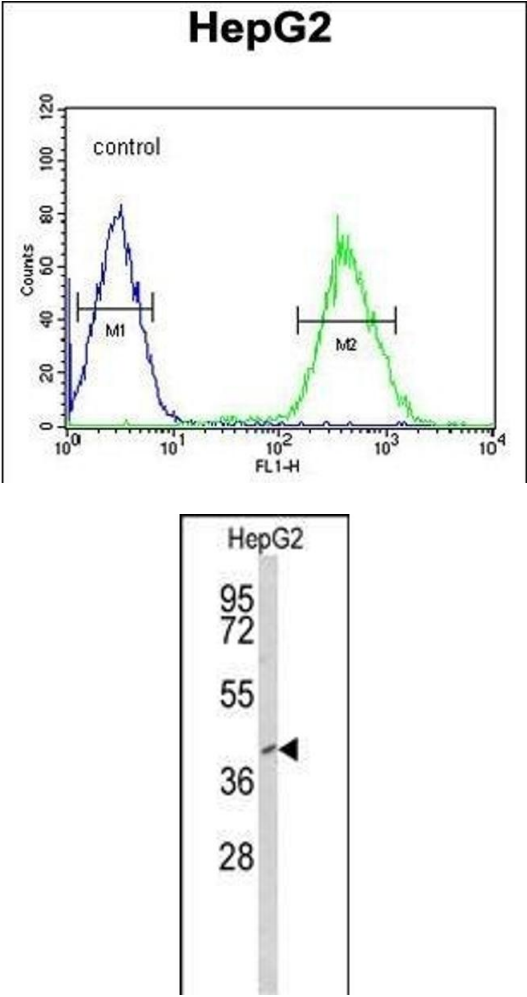
	FOXP3 gene are the cause of immunodeficiency polyendocrinopathy, enteropathy, X-linked syndrome (IPEX), also known as X-linked autoimmunity-immunodeficiency syndrome.
Molecular Weight:	47244
Gene ID:	50943
NCBI Accession:	NP_001107849 , NP_054728
UniProt:	Q9BZS1
Pathways:	Chromatin Binding , Regulation of Leukocyte Mediated Immunity , Positive Regulation of Immune Effector Process , Production of Molecular Mediator of Immune Response , Activated T Cell Proliferation

Application Details

Application Notes:	WB: 1:1000. FC: 1:10~50
Restrictions:	For Research Use only

Handling

Format:	Liquid
Buffer:	Purified polyclonal antibody supplied in PBS with 0.09 % (W/V) sodium azide.
Preservative:	Sodium azide
Precaution of Use:	This product contains Sodium azide: a POISONOUS AND HAZARDOUS SUBSTANCE which should be handled by trained staff only.
Storage:	4 °C,-20 °C
Storage Comment:	Maintain refrigerated at 2-8 °C for up to 6 months. For long term storage store at -20 °C in small aliquots to prevent freeze-thaw cycles.
Expiry Date:	6 months



Flow Cytometry

Image 1. FOXP3 Antibody (Center) (ABIN650728 and ABIN2839416) flow cytometric analysis of HepG2 cells (right histogram) compared to a negative control cell (left histogram).FITC-conjugated goat-anti-rabbit secondary antibodies were used for the analysis.

Western Blotting

Image 2. Western blot analysis of FOXP3 Antibody (Center) (ABIN650728 and ABIN2839416) in HepG2 cell line lysates (35 µg/lane). FOXP3 (arrow) was detected using the purified Pab.