

Datasheet for ABIN650737  
**anti-SMPD2 antibody (N-Term)**[Go to Product page](#)

## 3 Images

## Overview

Quantity:	400 µL
Target:	SMPD2
Binding Specificity:	AA 9-35, N-Term
Reactivity:	Human, Mouse
Host:	Rabbit
Clonality:	Polyclonal
Conjugate:	This SMPD2 antibody is un-conjugated
Application:	Western Blotting (WB), Flow Cytometry (FACS)

## Product Details

Immunogen:	This SMPD2 antibody is generated from rabbits immunized with a KLH conjugated synthetic peptide between 9-35 amino acids from the N-terminal region of human SMPD2.
Clone:	RB17400
Isotype:	Ig Fraction
Purification:	This antibody is prepared by Saturated Ammonium Sulfate (SAS) precipitation followed by dialysis against PBS.

## Target Details

Target:	SMPD2
Alternative Name:	SMPD2 ( <a href="#">SMPD2 Products</a> )

## Target Details

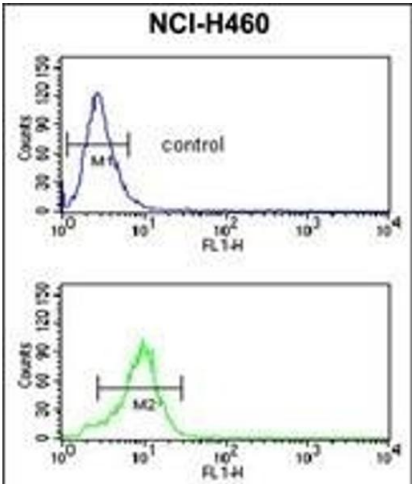
Background:	SMPD2 converts sphingomyelin to ceramide and hydrolyzes 1-acyl-2-lyso-sn-glycero-3-phosphocholine (lyso-PC) and 1-O-alkyl-2-lyso-sn-glycero-3-phosphocholine (lyso-platelet-activating factor). The physiological substrate seems to be Lyso-PAF.
Molecular Weight:	47646
Gene ID:	6610
NCBI Accession:	<a href="#">NP_003071</a>
UniProt:	<a href="#">O60906</a>
Pathways:	<a href="#">Neurotrophin Signaling Pathway</a>

## Application Details

Application Notes:	WB: 1:1000. WB: 1:1000. FC: 1:10~50
Restrictions:	For Research Use only

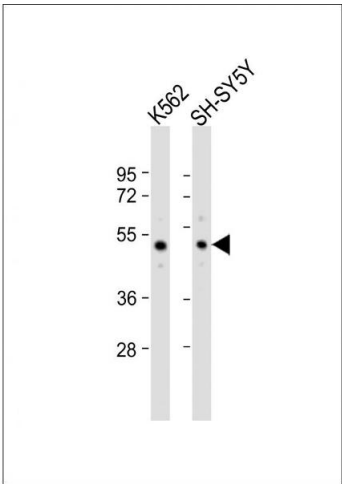
## Handling

Format:	Liquid
Buffer:	Purified polyclonal antibody supplied in PBS with 0.09 % (W/V) sodium azide.
Preservative:	Sodium azide
Precaution of Use:	This product contains Sodium azide: a POISONOUS AND HAZARDOUS SUBSTANCE which should be handled by trained staff only.
Storage:	4 °C,-20 °C
Storage Comment:	Maintain refrigerated at 2-8 °C for up to 6 months. For long term storage store at -20 °C in small aliquots to prevent freeze-thaw cycles.
Expiry Date:	6 months



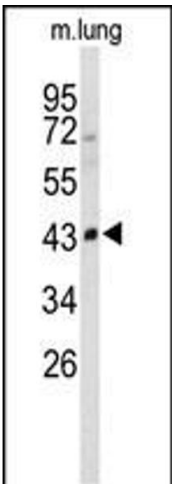
Flow Cytometry

**Image 1.** SD2 Antibody (N-term) (ABIN650737 and ABIN2839442) flow cytometric analysis of NCI- cells (bottom histogram) coared to a negative control cell (top histogram).FITC-conjugated goat-anti-rabbit secondary antibodies were used for the analysis.



Western Blotting

**Image 2.** All lanes : Anti-SD2 Antibody (N-term) at 1:1000 dilution Lane 1: K562 whole cell lysate Lane 2: SH-SY5Y whole cell lysate Lysates/proteins at 20 µg per lane. Secondary Goat Anti-Rabbit IgG, (H+L), Peroxidase conjugated at 1/10000 dilution. Predicted band size : 48 kDa Blocking/Dilution buffer: 5 % NFDm/TBST.



Western Blotting

**Image 3.** Western blot analysis of SD2 Antibody (N-term) (ABIN650737 and ABIN2839442) in mouse lung tissue lysates (35 µg/lane). SD2 (arrow) was detected using the purified Pab.