

Datasheet for ABIN650745
anti-LTA4H antibody (AA 163-191)

3 Images

[Go to Product page](#)

Overview

Quantity:	400 µL
Target:	LTA4H
Binding Specificity:	AA 163-191
Reactivity:	Human
Host:	Rabbit
Clonality:	Polyclonal
Conjugate:	This LTA4H antibody is un-conjugated
Application:	Western Blotting (WB), Immunofluorescence (IF), Immunohistochemistry (Paraffin-embedded Sections) (IHC (p))

Product Details

Immunogen:	This LTA4H antibody is generated from rabbits immunized with a KLH conjugated synthetic peptide between 163-191 amino acids from the Central region of human LTA4H.
Clone:	RB17402
Isotype:	Ig Fraction
Purification:	This antibody is purified through a protein A column, followed by peptide affinity purification.

Target Details

Target:	LTA4H
Alternative Name:	LTA4H (LTA4H Products)

Target Details

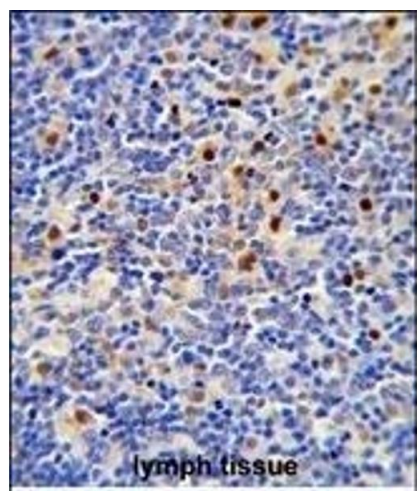
Background:	DHCR24 hydrolyzes an epoxide moiety of leukotriene A4 (LTA-4) to form leukotriene B4 (LTB-4). This enzyme also has some peptidase activity.
Molecular Weight:	69285
Gene ID:	4048
NCBI Accession:	NP_000886 , NP_001243572 , NP_001243573
UniProt:	P09960

Application Details

Application Notes:	IF: 1:10~50. WB: 1:1000. IHC-P: 1:50~100
Restrictions:	For Research Use only

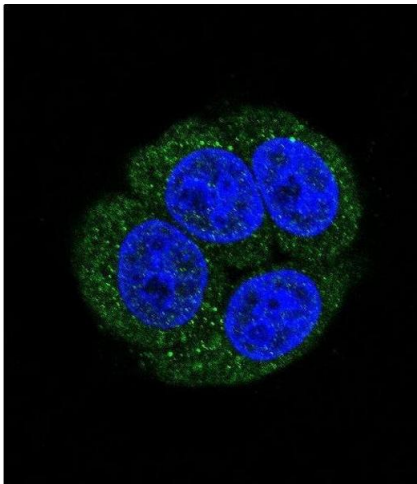
Handling

Format:	Liquid
Buffer:	Purified polyclonal antibody supplied in PBS with 0.09 % (W/V) sodium azide.
Preservative:	Sodium azide
Precaution of Use:	This product contains Sodium azide: a POISONOUS AND HAZARDOUS SUBSTANCE which should be handled by trained staff only.
Storage:	4 °C,-20 °C
Storage Comment:	Maintain refrigerated at 2-8 °C for up to 6 months. For long term storage store at -20 °C in small aliquots to prevent freeze-thaw cycles.
Expiry Date:	6 months



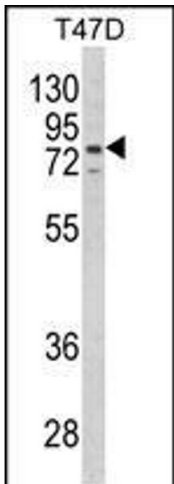
Immunohistochemistry (Paraffin-embedded Sections)

Image 1. Formalin-fixed and paraffin-embedded human lymph tissue reacted with LTA4H Antibody (Center) (ABIN650745 and ABIN2839464) , which was peroxidase-conjugated to the secondary antibody, followed by DAB staining. This data demonstrates the use of this antibody for immunohistochemistry, clinical relevance has not been evaluated.



Immunofluorescence

Image 2. Confocal immunofluorescent analysis of LTA4H Antibody (Center) (ABIN650745 and ABIN2839464) with HeLa cells followed by Alexa Fluor 488-conjugated goat anti-rabbit IgG (green). DAPI was used to stain the cell nuclei (blue).



Western Blotting

Image 3. Western blot analysis of LTA4H Antibody (Center) (ABIN650745 and ABIN2839464) in T47D cell line lysates (35 µg/lane). LTA4H (arrow) was detected using the purified Pab.