

Datasheet for ABIN650746  
**anti-ENPP2 antibody (AA 377-406)**

## 5 Images

[Go to Product page](#)

## Overview

Quantity:	200 µL
Target:	ENPP2
Binding Specificity:	AA 377-406
Reactivity:	Human
Host:	Rabbit
Clonality:	Polyclonal
Conjugate:	This ENPP2 antibody is un-conjugated
Application:	Western Blotting (WB), Flow Cytometry (FACS)

## Product Details

Immunogen:	This ENPP2 antibody is generated from rabbits immunized with a KLH conjugated synthetic peptide between 377-406 amino acids from the Central region of human ENPP2.
Clone:	RB18117
Isotype:	IgG
Purification:	This antibody is purified through a protein A column, followed by peptide affinity purification.

## Target Details

Target:	ENPP2
Alternative Name:	ENPP2 ( <a href="#">ENPP2 Products</a> )
Background:	ENPP2 functions as both a phosphodiesterase, which cleaves phosphodiester bonds at the 5'

## Target Details

end of oligonucleotides, and a phospholipase, which catalyzes production of lysophosphatidic acid (LPA) in extracellular fluids. LPA evokes growth factor-like responses including stimulation of cell proliferation and chemotaxis. This protein stimulates the motility of tumor cells and has angiogenic properties, and its expression is upregulated in several kinds of carcinomas. The protein is secreted and further processed to make the biologically active form.

Molecular Weight: 98994

Gene ID: 5168

NCBI Accession: [NP\\_001035181](#), [NP\\_001124335](#), [NP\\_006200](#)

UniProt: [Q13822](#)

## Application Details

Application Notes: WB: 1:1000. WB: 1:1000. WB: 1:2000. WB: 1:2000. FC: 1:10~50

Restrictions: For Research Use only

## Handling

Format: Liquid

Buffer: Purified polyclonal antibody supplied in PBS with 0.09 % (W/V) sodium azide.

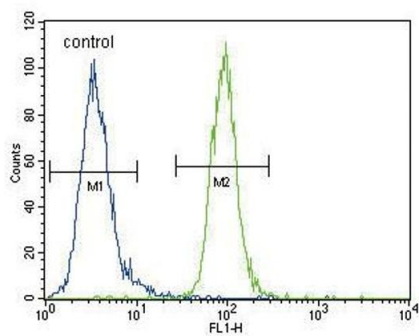
Preservative: Sodium azide

Precaution of Use: This product contains Sodium azide: a POISONOUS AND HAZARDOUS SUBSTANCE which should be handled by trained staff only.

Storage: 4 °C,-20 °C

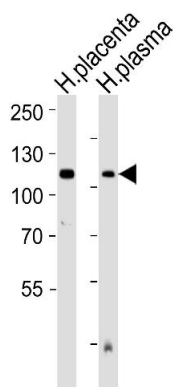
Storage Comment: Maintain refrigerated at 2-8 °C for up to 6 months. For long term storage store at -20 °C in small aliquots to prevent freeze-thaw cycles.

Expiry Date: 6 months



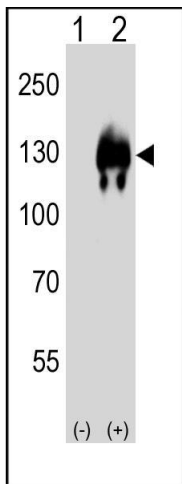
### Flow Cytometry

**Image 1.** EN Antibody (Center) (ABIN650746 and ABIN2839471) flow cytometric analysis of MDA-M cells (right histogram) compared to a negative control cell (left histogram). FITC-conjugated goat-anti-rabbit secondary antibodies were used for the analysis.



### Western Blotting

**Image 2.** Western blot analysis of lysates from human placenta and plasma tissue lysate (from left to right), using EN Antibody (Center) (ABIN650746 and ABIN2839471). (ABIN650746 and ABIN2839471) was diluted at 1:1000 at each lane. A goat anti-rabbit IgG H&L(HRP) at 1:5000 dilution was used as the secondary antibody. Lysates at 35 µg per lane.



### Western Blotting

**Image 3.** Western blot analysis of (arrow) using rabbit polyclonal EN Antibody (Center) (ABIN650746 and ABIN2839471). 293T cell lysates (2 µg/lane) either nontransfected (Lane 1) or transiently transfected (Lane 2) with the gene.

Please check the [product details page](#) for more images. Overall 5 images are available for ABIN650746.