

Datasheet for ABIN650749  
**anti-HSPH1 antibody (AA 549-579)**

## 3 Images

[Go to Product page](#)

## Overview

Quantity:	400 µL
Target:	HSPH1
Binding Specificity:	AA 549-579
Reactivity:	Human
Host:	Rabbit
Clonality:	Polyclonal
Conjugate:	This HSPH1 antibody is un-conjugated
Application:	Western Blotting (WB), Immunohistochemistry (Paraffin-embedded Sections) (IHC (p)), Flow Cytometry (FACS)

## Product Details

Immunogen:	This HSPH1 antibody is generated from rabbits immunized with a KLH conjugated synthetic peptide between 549-579 amino acids from the Central region of human HSPH1.
Clone:	RB16529
Isotype:	Ig Fraction
Predicted Reactivity:	B, Ha, Rat
Purification:	This antibody is prepared by Saturated Ammonium Sulfate (SAS) precipitation followed by dialysis against PBS.

## Target Details

Target:	HSPH1
---------	-------

## Target Details

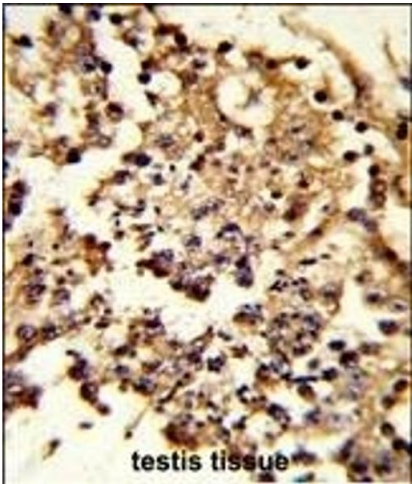
Alternative Name:	HSPH1 ( <a href="#">HSPH1 Products</a> )
Background:	HSPH1 prevents the aggregation of denatured proteins in cells under severe stress, on which the ATP levels decrease markedly. This protein inhibits HSPA8/HSC70 ATPase and chaperone activities.
Molecular Weight:	96865
Gene ID:	10808
NCBI Accession:	<a href="#">NP_006635</a>
UniProt:	<a href="#">Q92598</a>

## Application Details

Application Notes:	WB: 1:1000. IHC-P: 1:50~100. FC: 1:10~50
Restrictions:	For Research Use only

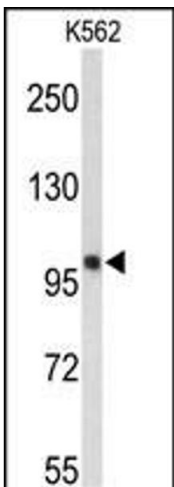
## Handling

Format:	Liquid
Buffer:	Purified polyclonal antibody supplied in PBS with 0.09 % (W/V) sodium azide.
Preservative:	Sodium azide
Precaution of Use:	This product contains Sodium azide: a POISONOUS AND HAZARDOUS SUBSTANCE which should be handled by trained staff only.
Storage:	4 °C,-20 °C
Storage Comment:	Maintain refrigerated at 2-8 °C for up to 6 months. For long term storage store at -20 °C in small aliquots to prevent freeze-thaw cycles.
Expiry Date:	6 months



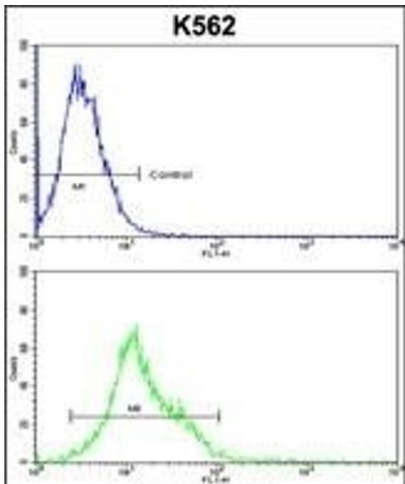
#### Immunohistochemistry (Paraffin-embedded Sections)

**Image 1.** Formalin-fixed and paraffin-embedded human testis tissue reacted with HSPH1 Antibody (Center), which was peroxidase-conjugated to the secondary antibody, followed by DAB staining. This data demonstrates the use of this antibody for immunohistochemistry, clinical relevance has not been evaluated.



#### Western Blotting

**Image 2.** Western blot analysis of HSPH1 Antibody (Center) (ABIN650749 and ABIN2839478) in K562 cell line lysates (35 µg/lane). HSPH1 (arrow) was detected using the purified Pab.



#### Flow Cytometry

**Image 3.** HSPH1 Antibody (Center) (ABIN650749 and ABIN2839478) flow cytometric analysis of k562 cells (bottom histogram) compared to a negative control cell (top histogram). FITC-conjugated goat-anti-rabbit secondary antibodies were used for the analysis.