

Datasheet for ABIN650750
anti-RFC3 antibody (C-Term)[Go to Product page](#)

2 Images

Overview

Quantity:	400 µL
Target:	RFC3
Binding Specificity:	AA 230-258, C-Term
Reactivity:	Human, Mouse
Host:	Rabbit
Clonality:	Polyclonal
Conjugate:	This RFC3 antibody is un-conjugated
Application:	Western Blotting (WB), Flow Cytometry (FACS)

Product Details

Immunogen:	This RFC3 antibody is generated from rabbits immunized with a KLH conjugated synthetic peptide between 230-258 amino acids from the C-terminal region of human RFC3.
Clone:	RB17309
Isotype:	Ig Fraction
Predicted Reactivity:	B
Purification:	This antibody is prepared by Saturated Ammonium Sulfate (SAS) precipitation followed by dialysis against PBS.

Target Details

Target:	RFC3
---------	------

Target Details

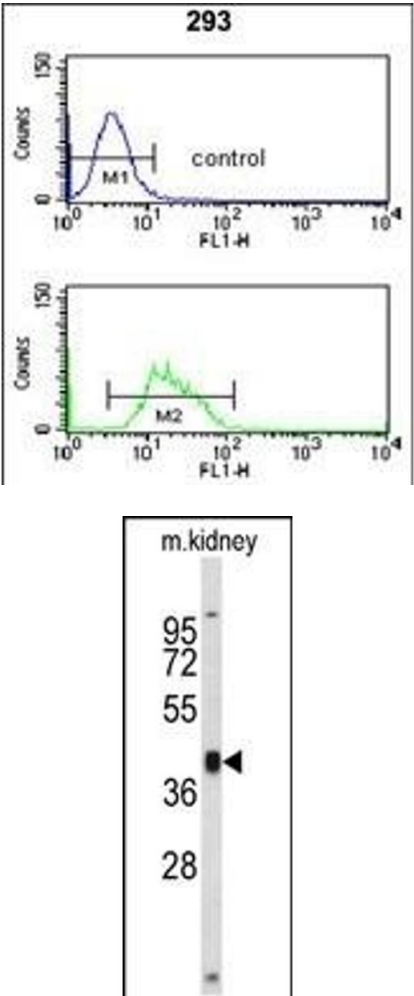
Alternative Name:	RFC3 (RFC3 Products)
Background:	The elongation of primed DNA templates by DNA polymerase delta and DNA polymerase epsilon requires the accessory proteins proliferating cell nuclear antigen (PCNA) and replication factor C (RFC). RFC, also named activator 1, is a protein complex consisting of five distinct subunits of 140, 40, 38, 37, and 36 kDa.
Molecular Weight:	40556
Gene ID:	5983
NCBI Accession:	NP_002906 , NP_853536
UniProt:	P40938
Pathways:	Telomere Maintenance , DNA Damage Repair , DNA Replication , Synthesis of DNA

Application Details

Application Notes:	WB: 1:1000. FC: 1:10~50
Restrictions:	For Research Use only

Handling

Format:	Liquid
Buffer:	Purified polyclonal antibody supplied in PBS with 0.09 % (W/V) sodium azide.
Preservative:	Sodium azide
Precaution of Use:	This product contains Sodium azide: a POISONOUS AND HAZARDOUS SUBSTANCE which should be handled by trained staff only.
Storage:	4 °C, -20 °C
Storage Comment:	Maintain refrigerated at 2-8 °C for up to 6 months. For long term storage store at -20 °C in small aliquots to prevent freeze-thaw cycles.
Expiry Date:	6 months



Flow Cytometry

Image 1. RFC3 Antibody (C-term) (ABIN650750 and ABIN2839479) flow cytometry analysis of 293 cells (bottom histogram) compared to a negative control cell (top histogram). FITC-conjugated goat-anti-rabbit secondary antibodies were used for the analysis.

Western Blotting

Image 2. Western blot analysis of RFC3 Antibody (C-term) (ABIN650750 and ABIN2839479) in mouse kidney tissue lysates (35 µg/lane). RFC3 (arrow) was detected using the purified Pab.