



Datasheet for ABIN650755
anti-DSCC1 antibody (C-Term)



[Go to Product page](#)

1 Image

Overview

Quantity:	400 µL
Target:	DSCC1
Binding Specificity:	AA 311-339, C-Term
Reactivity:	Human
Host:	Rabbit
Clonality:	Polyclonal
Conjugate:	This DSCC1 antibody is un-conjugated
Application:	Western Blotting (WB)

Product Details

Immunogen:	This DCC1 antibody is generated from rabbits immunized with a KLH conjugated synthetic peptide between 311-339 amino acids from the C-terminal region of human DCC1.
Clone:	RB27627
Isotype:	Ig Fraction
Purification:	This antibody is purified through a protein A column, followed by peptide affinity purification.

Target Details

Target:	DSCC1
Alternative Name:	DCC1 (DSCC1 Products)
Background:	CHTF18 (MIM 613201), CHTF8 (MIM 613202), and DSCC1 are components of an alternative

Target Details

replication factor C (RFC) (see MIM 600404) complex that loads PCNA (MIM 176740) onto DNA during S phase of the cell cycle (Merkle et al., 2003 [PubMed 12766176], Bermudez et al., 2003 [PubMed 12930902]).

Molecular Weight: 44825

Gene ID: 79075

NCBI Accession: [NP_076999](#)

UniProt: [Q9BVC3](#)

Application Details

Application Notes: WB: 1:1000

Restrictions: For Research Use only

Handling

Format: Liquid

Buffer: Purified polyclonal antibody supplied in PBS with 0.09 % (W/V) sodium azide.

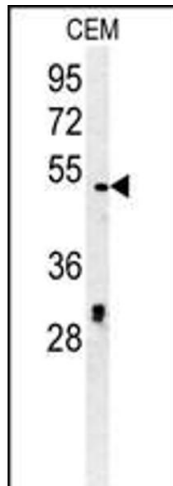
Preservative: Sodium azide

Precaution of Use: This product contains Sodium azide: a POISONOUS AND HAZARDOUS SUBSTANCE which should be handled by trained staff only.

Storage: 4 °C, -20 °C

Storage Comment: Maintain refrigerated at 2-8 °C for up to 6 months. For long term storage store at -20 °C in small aliquots to prevent freeze-thaw cycles.

Expiry Date: 6 months



Western Blotting

Image 1. DCC1 Antibody (C-term) (ABIN650755 and ABIN2839491) western blot analysis in CEM cell line lysates (35 µg/lane). This demonstrates the DCC1 antibody detected the DCC1 protein (arrow).