

Datasheet for ABIN650770  
**anti-GOT1 antibody (C-Term)**

## 3 Images

[Go to Product page](#)

## Overview

Quantity:	400 µL
Target:	GOT1
Binding Specificity:	AA 352-381, C-Term
Reactivity:	Human
Host:	Rabbit
Clonality:	Polyclonal
Conjugate:	This GOT1 antibody is un-conjugated
Application:	Western Blotting (WB), Immunohistochemistry (Paraffin-embedded Sections) (IHC (p)), Flow Cytometry (FACS)

## Product Details

Immunogen:	This GOT1 antibody is generated from rabbits immunized with a KLH conjugated synthetic peptide between 352-381 amino acids from the C-terminal region of human GOT1.
Clone:	RB20730
Isotype:	Ig Fraction
Predicted Reactivity:	M, Rat
Purification:	This antibody is purified through a protein A column, followed by peptide affinity purification.

## Target Details

Target:	GOT1
---------	------

## Target Details

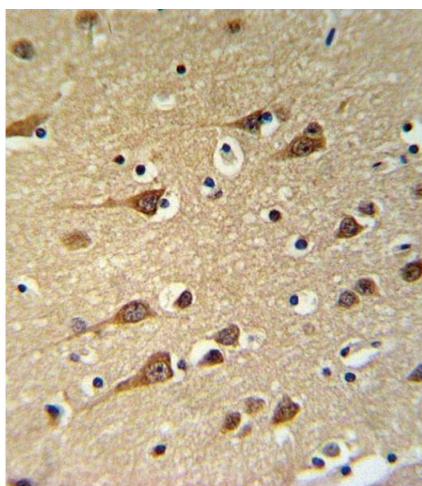
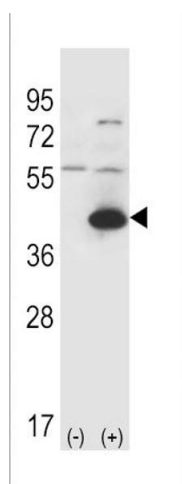
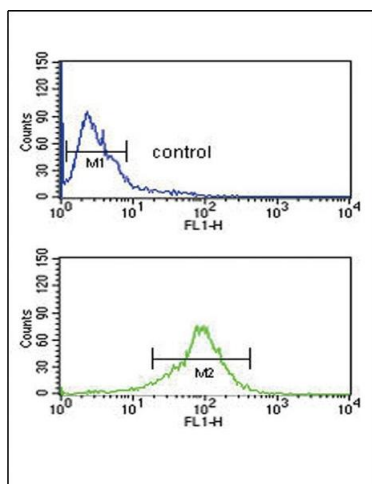
Alternative Name:	GOT1 ( <a href="#">GOT1 Products</a> )
Background:	Glutamic-oxaloacetic transaminase is a pyridoxal phosphate-dependent enzyme which exists in cytoplasmic and mitochondrial forms, GOT1 and GOT2, respectively. GOT plays a role in amino acid metabolism and the urea and tricarboxylic acid cycles. The two enzymes are homodimeric and show close homology.
Molecular Weight:	46248
Gene ID:	2805
NCBI Accession:	<a href="#">NP_002070</a>
UniProt:	<a href="#">P17174</a>
Pathways:	<a href="#">Hepatitis C</a> , <a href="#">Monocarboxylic Acid Catabolic Process</a> , <a href="#">Methionine Biosynthetic Process</a>

## Application Details

Application Notes:	WB: 1:1000. IHC-P: 1:10~50. FC: 1:10~50
Restrictions:	For Research Use only

## Handling

Format:	Liquid
Buffer:	Purified polyclonal antibody supplied in PBS with 0.09 % (W/V) sodium azide.
Preservative:	Sodium azide
Precaution of Use:	This product contains Sodium azide: a POISONOUS AND HAZARDOUS SUBSTANCE which should be handled by trained staff only.
Storage:	4 °C,-20 °C
Storage Comment:	Maintain refrigerated at 2-8 °C for up to 6 months. For long term storage store at -20 °C in small aliquots to prevent freeze-thaw cycles.
Expiry Date:	6 months



### Flow Cytometry

**Image 1.** GOT1 Antibody (C-term) (ABIN650770 and ABIN2839551) flow cytometric analysis of MDA-M cells (bottom histogram) compared to a negative control cell (top histogram). FITC-conjugated goat-anti-rabbit secondary antibodies were used for the analysis.

### Western Blotting

**Image 2.** Western blot analysis of GOT1 (arrow) using rabbit polyclonal GOT1 Antibody (C-term) (ABIN650770 and ABIN2839551). 293 cell lysates (2 µg/lane) either nontransfected (Lane 1) or transiently transfected (Lane 2) with the GOT1 gene.

### Immunohistochemistry (Paraffin-embedded Sections)

**Image 3.** GOT1 Antibody (C-term) (ABIN650770 and ABIN2839551) IHC analysis in formalin fixed and paraffin embedded brain tissue followed by peroxidase conjugation of the secondary antibody and DAB staining. This data demonstrates the use of the GOT1 Antibody (C-term) for immunohistochemistry. Clinical relevance has not been evaluated.