

Datasheet for ABIN650778

anti-GMP Synthase antibody (C-Term)

3 Images

[Go to Product page](#)

Overview

Quantity:	400 µL
Target:	GMP Synthase (GMPS)
Binding Specificity:	AA 602-630, C-Term
Reactivity:	Human
Host:	Rabbit
Clonality:	Polyclonal
Conjugate:	This GMP Synthase antibody is un-conjugated
Application:	Western Blotting (WB), Immunohistochemistry (Paraffin-embedded Sections) (IHC (p)), Flow Cytometry (FACS)

Product Details

Immunogen:	This GMPS antibody is generated from rabbits immunized with a KLH conjugated synthetic peptide between 602-630 amino acids from the C-terminal region of human GMPS.
Clone:	RB20728
Isotype:	Ig Fraction
Predicted Reactivity:	M
Purification:	This antibody is prepared by Saturated Ammonium Sulfate (SAS) precipitation followed by dialysis against PBS.

Target Details

Target:	GMP Synthase (GMPS)
---------	---------------------

Target Details

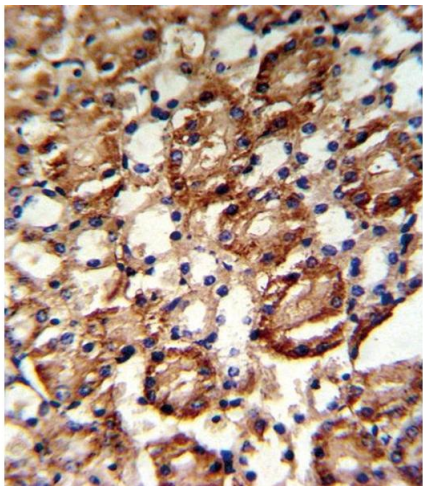
Alternative Name:	GMPS (GMPS Products)
Background:	GMPS is involved in the de novo synthesis of guanine nucleotides which are not only essential for DNA and RNA synthesis, but also provide GTP, which is involved in a number of cellular processes important for cell division.
Molecular Weight:	76715
Gene ID:	8833
NCBI Accession:	NP_003866
UniProt:	P49915
Pathways:	Ribonucleoside Biosynthetic Process

Application Details

Application Notes:	WB: 1:1000. IHC-P: 1:10~50. FC: 1:10~50
Restrictions:	For Research Use only

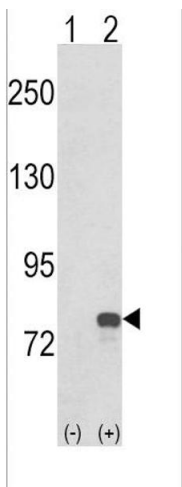
Handling

Format:	Liquid
Buffer:	Purified polyclonal antibody supplied in PBS with 0.09 % (W/V) sodium azide.
Preservative:	Sodium azide
Precaution of Use:	This product contains Sodium azide: a POISONOUS AND HAZARDOUS SUBSTANCE which should be handled by trained staff only.
Storage:	4 °C,-20 °C
Storage Comment:	Maintain refrigerated at 2-8 °C for up to 6 months. For long term storage store at -20 °C in small aliquots to prevent freeze-thaw cycles.
Expiry Date:	6 months



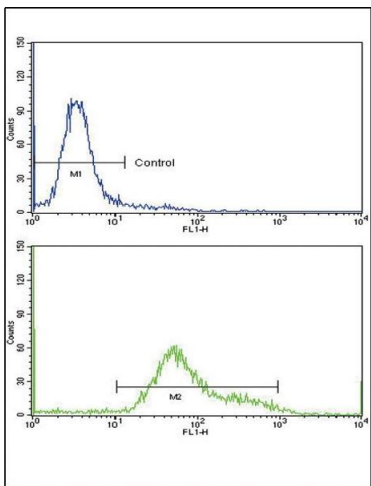
Immunohistochemistry (Paraffin-embedded Sections)

Image 1. Formalin-fixed and paraffin-embedded kidney tissue reacted with GS Antibody (C-term), which was peroxidase-conjugated to the secondary antibody, followed by DAB staining. This data demonstrates the use of this antibody for immunohistochemistry, clinical relevance has not been evaluated.



Western Blotting

Image 2. Western blot analysis of GS (arrow) using rabbit polyclonal GS Antibody (C-term) (ABIN650778 and ABIN2839555). 293 cell lysates (2 µg/lane) either nontransfected (Lane 1) or transiently transfected with the GS gene (Lane 2) (Origene Technologies).



Flow Cytometry

Image 3. Flow cytometric analysis of hela cells using GS Antibody (C-term)(bottom histogram) coared to a negative control cell (top histogram)FITC-conjugated goat-anti-rabbit secondary antibodies were used for the analysis.