

Datasheet for ABIN650786

anti-ATP5B antibody (AA 135-163)**7** Images[Go to Product page](#)

Overview

Quantity:	400 µL
Target:	ATP5B
Binding Specificity:	AA 135-163
Reactivity:	Human
Host:	Rabbit
Clonality:	Polyclonal
Conjugate:	This ATP5B antibody is un-conjugated
Application:	Western Blotting (WB), Flow Cytometry (FACS), Immunofluorescence (IF), Immunohistochemistry (Paraffin-embedded Sections) (IHC (p))

Product Details

Immunogen:	This ATP5B antibody is generated from rabbits immunized with a KLH conjugated synthetic peptide between 135-163 amino acids from the Central region of human ATP5B.
Clone:	RB20513
Isotype:	Ig Fraction
Predicted Reactivity:	B, M, Rat
Purification:	This antibody is purified through a protein A column, followed by peptide affinity purification.

Target Details

Target:	ATP5B
---------	-------

Target Details

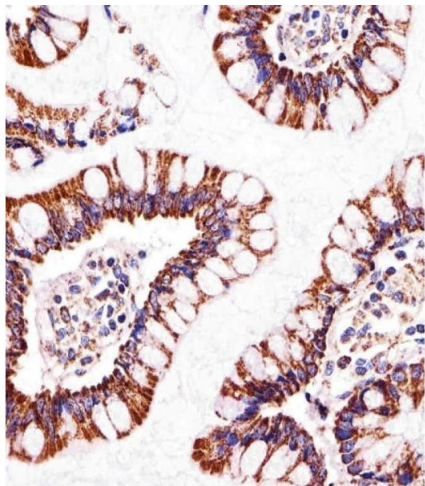
Alternative Name:	ATP5B (ATP5B Products)
Background:	ATP5B is a subunit of mitochondrial ATP synthase. Mitochondrial ATP synthase catalyzes ATP synthesis, utilizing an electrochemical gradient of protons across the inner membrane during oxidative phosphorylation. ATP synthase is composed of two linked multi-subunit complexes: the soluble catalytic core, F1, and the membrane-spanning component, Fo, comprising the proton channel. The catalytic portion of mitochondrial ATP synthase consists of 5 different subunits (alpha, beta, gamma, delta, and epsilon) assembled with a stoichiometry of 3 alpha, 3 beta, and a single representative of the other 3. The proton channel consists of three main subunits (a, b, c). It is the beta subunit of the catalytic core.
Molecular Weight:	56560
Gene ID:	506
NCBI Accession:	NP_001677
UniProt:	P06576
Pathways:	Proton Transport, Ribonucleoside Biosynthetic Process

Application Details

Application Notes:	IF: 1:25. WB: 1:1000. WB: 1:1000. IHC-P: 1:50~100. IHC-P: 1:25. IHC-P: 1:25. FC: 1:10~50
Restrictions:	For Research Use only

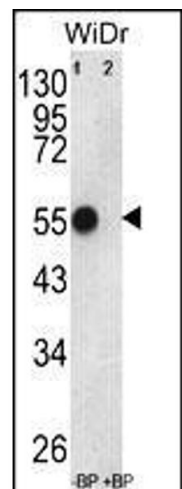
Handling

Format:	Liquid
Buffer:	Purified polyclonal antibody supplied in PBS with 0.09 % (W/V) sodium azide.
Preservative:	Sodium azide
Precaution of Use:	This product contains Sodium azide: a POISONOUS AND HAZARDOUS SUBSTANCE which should be handled by trained staff only.
Storage:	4 °C,-20 °C
Storage Comment:	Maintain refrigerated at 2-8 °C for up to 6 months. For long term storage store at -20 °C in small aliquots to prevent freeze-thaw cycles.
Expiry Date:	6 months



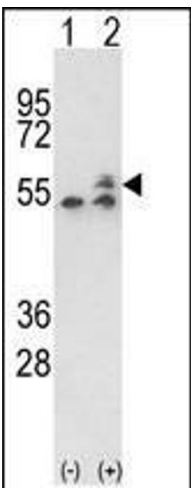
Immunohistochemistry (Paraffin-embedded Sections)

Image 1. Immunohistochemical analysis of paraffin-embedded H. small intestine section using ATP5B Antibody (Center) (ABIN650786 and ABIN2839558). (ABIN650786 and ABIN2839558) was diluted at 1:25 dilution. A undiluted biotinylated goat polyvalent antibody was used as the secondary, followed by DAB staining.



Western Blotting

Image 2. Western blot analysis of ATP5B Antibody (Center) Pab (ABIN650786 and ABIN2839558) pre-incubated without (lane 1) and with (lane 2) blocking peptide in WiDr cell line lysate. ATP5B (arrow) was detected using the purified Pab.



Western Blotting

Image 3. Western blot analysis of ATP5B (arrow) using rabbit polyclonal ATP5B Antibody (Center) (ABIN650786 and ABIN2839558). 293 cell lysates (2 µg/lane) either nontransfected (Lane 1) or transiently transfected with the ATP5B gene (Lane 2).

Please check the [product details page](#) for more images. Overall 7 images are available for ABIN650786.