

Datasheet for ABIN650810
anti-PDX1 antibody (pThr11)

2 Images

[Go to Product page](#)

Overview

Quantity:	400 µL
Target:	PDX1
Binding Specificity:	pThr11
Reactivity:	Human
Host:	Rabbit
Clonality:	Polyclonal
Conjugate:	This PDX1 antibody is un-conjugated
Application:	Dot Blot (DB), Immunofluorescence (IF)

Product Details

Immunogen:	This PDX1 Antibody is generated from rabbits immunized with a KLH conjugated synthetic phosphopeptide corresponding to amino acid residues surrounding T11 of human PDX1.
Clone:	RB15204
Isotype:	Ig Fraction
Predicted Reactivity:	M, Rat
Purification:	This antibody is purified through a protein A column, followed by peptide affinity purification.

Target Details

Target:	PDX1
Alternative Name:	PDX1 (PDX1 Products)

Target Details

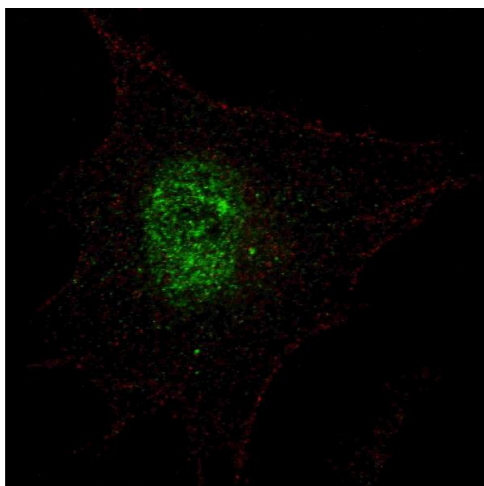
Background:	PDX1 is a transcriptional activator of several genes, including insulin, somatostatin, glucokinase, islet amyloid polypeptide, and glucose transporter type 2. The encoded nuclear protein is involved in the early development of the pancreas and plays a major role in glucose-dependent regulation of insulin gene expression. Defects in this protein are a cause of pancreatic agenesis, which can lead to early-onset insulin-dependent diabetes mellitus (NIDDM), as well as maturity onset diabetes of the young type 4 (MODY4).
Molecular Weight:	30771
Gene ID:	3651
NCBI Accession:	NP_000200
UniProt:	P52945
Pathways:	Nuclear Receptor Transcription Pathway , Positive Regulation of Peptide Hormone Secretion , Steroid Hormone Mediated Signaling Pathway , Hormone Transport , Carbohydrate Homeostasis , Chromatin Binding , Maintenance of Protein Location

Application Details

Application Notes:	IF: 1:100. DB: 1:500
Restrictions:	For Research Use only

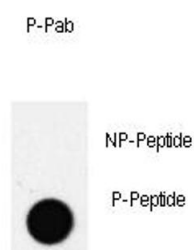
Handling

Format:	Liquid
Buffer:	Purified polyclonal antibody supplied in PBS with 0.09 % (W/V) sodium azide.
Preservative:	Sodium azide
Precaution of Use:	This product contains Sodium azide: a POISONOUS AND HAZARDOUS SUBSTANCE which should be handled by trained staff only.
Storage:	4 °C, -20 °C
Storage Comment:	Maintain refrigerated at 2-8 °C for up to 6 months. For long term storage store at -20 °C in small aliquots to prevent freeze-thaw cycles.
Expiry Date:	6 months



Immunofluorescence

Image 1. Fluorescent confocal image of SY5Y cells stained with phospho-PDX1-T11 antibody. SY5Y cells were fixed with 4 % PFA (20 min), permeabilized with Triton X-100 (0.2 %, 30 min). Cells were then incubated with (ABIN650810 and ABIN2839791) phospho-PDX1-T11 primary antibody (1:100, 2 h at room temperature). For secondary antibody, Alexa Fluor® 488 conjugated donkey anti-rabbit antibody (green) was used (1:1000, 1h). Nuclei were counterstained with Hoechst 33342 (blue) (10 µg/mL, 5 min). Note the highly specific localization of the phospho-PDX1 immunosignal mainly to the nucleus.



Dot Blot

Dot Blot

Image 2. Dot blot analysis of PDX1 Antibody (T11) Pab (ABIN650810 and ABIN2839791) on nitrocellulose membrane. 50 ng of Phospho-peptide or Non Phospho-peptide per dot were adsorbed. Antibody working concentrations are 0.5 µg per ml.