



Datasheet for ABIN650815
anti-HIST1H4A antibody (2meLys20)



[Go to Product page](#)

4 Images

Overview

Quantity:	400 µL
Target:	HIST1H4A
Binding Specificity:	2meLys20, AA 1-30
Reactivity:	Human
Host:	Rabbit
Clonality:	Polyclonal
Conjugate:	This HIST1H4A antibody is un-conjugated
Application:	Western Blotting (WB), Dot Blot (DB), Flow Cytometry (FACS), Immunohistochemistry (Paraffin-embedded Sections) (IHC (p))

Product Details

Immunogen:	This H4 antibody is generated from rabbits immunized with a KLH conjugated synthetic peptide between 1-30 amino acids from human H4.
Clone:	RB17115
Isotype:	Ig Fraction
Purification:	This antibody is purified through a protein A column, followed by peptide affinity purification.

Target Details

Target:	HIST1H4A
Alternative Name:	H4 (HIST1H4A Products)

Target Details

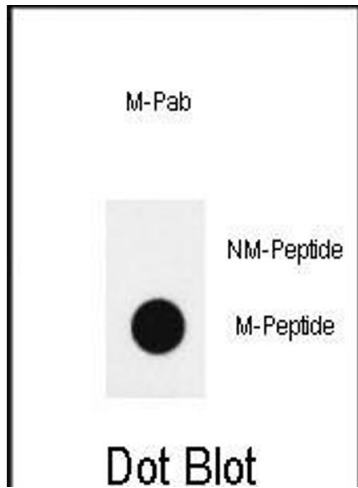
Background:	Histone proteins H3, H4, H2A, and H2B function as building blocks to package eukaryotic DNA into repeating nucleosome units that are folded in higher order chromatin fibers. The nucleosome is composed of an octamer containing a H3/H4 tetramer and two H2A/H2B dimers, surrounded by approximately 146 base pairs of DNA. A diverse and elaborate array of post-translational modifications including acetylation, phosphorylation, methylation, ubiquitination, and ADP-ribosylation occurs on the N-terminal tail domains of histones.
Molecular Weight:	11367
Gene ID:	554313
NCBI Accession:	NP_001029249 , NP_003486 , NP_003529 , NP_003530 , NP_003531 , NP_003532 , NP_003533 , NP_003534 , NP_003535 , NP_003536 , NP_003537 , NP_003539 , NP_068803 , NP_778224
UniProt:	P62805

Application Details

Application Notes:	WB: 1:1000. IHC-P: 1:50~100. FC: 1:10~50. DB: 1:500
Restrictions:	For Research Use only

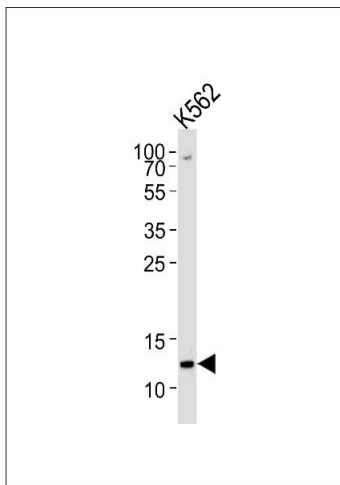
Handling

Format:	Liquid
Buffer:	Purified polyclonal antibody supplied in PBS with 0.09 % (W/V) sodium azide.
Preservative:	Sodium azide
Precaution of Use:	This product contains Sodium azide: a POISONOUS AND HAZARDOUS SUBSTANCE which should be handled by trained staff only.
Storage:	4 °C,-20 °C
Storage Comment:	Maintain refrigerated at 2-8 °C for up to 6 months. For long term storage store at -20 °C in small aliquots to prevent freeze-thaw cycles.
Expiry Date:	6 months



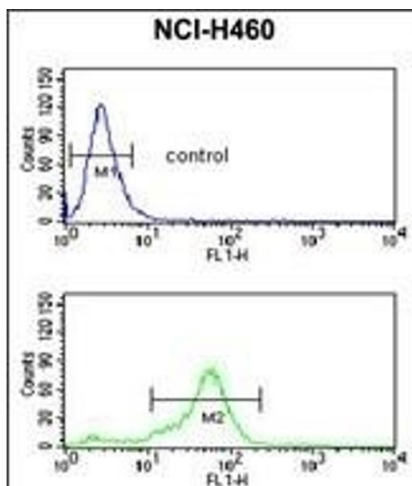
Dot Blot

Image 1. Dot blot analysis of anti-hH4-K20(Methyl 2) methylation-specific Pab (Cat. (ABIN650815 and ABIN2839793)) on nitrocellulose membrane. 50 ng of methylation-peptide or Non methylation-peptide per dot were adsorbed. Antibody working concentrations are 0.5 μ g per ml.



Western Blotting

Image 2. Western blot analysis of lysate from K562 cell line, using H4 Antibody (K20) (ABIN650815 and ABIN2839793). (ABIN650815 and ABIN2839793) was diluted at 1:1000 at each lane. A goat anti-rabbit IgG H&L(HRP) at 1:5000 dilution was used as the secondary antibody. Lysate at 35 μ g per lane.



Flow Cytometry

Image 3. H4 Antibody (K20 [Me2]) (ABIN650815 and ABIN2839793) flow cytometric analysis of NCI- cells (bottom histogram) compared to a negative control cell (top histogram).FITC-conjugated goat-anti-rabbit secondary antibodies were used for the analysis.

Please check the [product details page](#) for more images. Overall 4 images are available for ABIN650815.