



[Go to Product page](#)

Datasheet for ABIN650826

## anti-LINGO1 antibody (pSer596)

### 1 Image

#### Overview

Quantity:	400 µL
Target:	LINGO1
Binding Specificity:	pSer596
Reactivity:	Human
Host:	Rabbit
Clonality:	Polyclonal
Conjugate:	This LINGO1 antibody is un-conjugated
Application:	Dot Blot (DB)

#### Product Details

Immunogen:	This LINGO-1(LRRN6A) Antibody is generated from rabbits immunized with a KLH conjugated synthetic phosphopeptide corresponding to amino acid residues surrounding S596 of human LINGO-1(LRRN6A).
Clone:	RB15362
Isotype:	Ig Fraction
Predicted Reactivity:	C, Pr
Purification:	This antibody is purified through a protein A column, followed by peptide affinity purification.

#### Target Details

Target:	LINGO1
---------	--------

## Target Details

---

Alternative Name:	LINGO-1 (LRRN6A) ( <a href="#">LINGO1 Products</a> )
Background:	LINGO-1 (LRR and Ig domain-containing Nogo Receptor interacting protein) is a nervous system-specific LRR-Ig-containing protein with an important role in CNS biology. LINGO-1 was discovered in a sequence database search for human SLIT homologs that were selectively expressed in the brain. LINGO-1 is a transmembrane protein that is a component of the Nogo-66 receptor complex. It binds NgR1 and p75 and is an additional functional component of the NgR1/p75 signaling complex.
Molecular Weight:	69101
Gene ID:	235402
NCBI Accession:	<a href="#">NP_851419</a>
UniProt:	<a href="#">Q9D1T0</a>

## Application Details

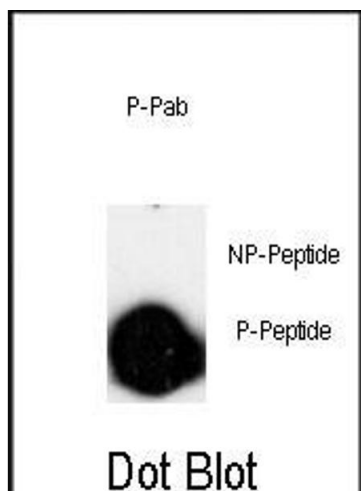
---

Application Notes:	DB: 1:500
Restrictions:	For Research Use only

## Handling

---

Format:	Liquid
Buffer:	Purified polyclonal antibody supplied in PBS with 0.09 % (W/V) sodium azide.
Preservative:	Sodium azide
Precaution of Use:	This product contains Sodium azide: a POISONOUS AND HAZARDOUS SUBSTANCE which should be handled by trained staff only.
Storage:	4 °C,-20 °C
Storage Comment:	Maintain refrigerated at 2-8 °C for up to 6 months. For long term storage store at -20 °C in small aliquots to prevent freeze-thaw cycles.
Expiry Date:	6 months



#### Dot Blot

**Image 1.** Dot blot analysis of anti-Phospho-LINGO-1(LRRN6A)-p Pab (ABIN650826 and ABIN2839798) on nitrocellulose membrane. 50 ng of Phospho-peptide or Non Phospho-peptide per dot were adsorbed. Antibody working concentrations are 0.5 µg per ml.