



Datasheet for ABIN650834

## anti-Phospholamban antibody (pThr17)



[Go to Product page](#)

### 2 Images

#### Overview

Quantity:	200 µL
Target:	Phospholamban (PLN)
Binding Specificity:	pThr17
Reactivity:	Human, Rat
Host:	Rabbit
Clonality:	Polyclonal
Conjugate:	This Phospholamban antibody is un-conjugated
Application:	Western Blotting (WB), Dot Blot (DB)

#### Product Details

Immunogen:	This PLB Antibody is generated from rabbits immunized with a KLH conjugated synthetic phosphopeptide corresponding to amino acid residues surrounding T17 of human PLB.
Clone:	RB24137
Isotype:	IgG
Purification:	This antibody is purified through a protein A column, followed by peptide affinity purification.

#### Target Details

Target:	Phospholamban (PLN)
Alternative Name:	PLB ( <a href="#">PLN Products</a> )
Background:	Phospholamban (PLB) is a 52 amino acid phosphoprotein which regulates the calcium pump of

## Target Details

---

cardiac sarcoplasmic reticulum (SR). PLB is an oligomer of five identical subunits each having a cytoplasmic and transmembrane domain. The cytoplasmic domain (residues 1 to 25) contains the phosphorylation sites and is highly basic and readily cleaved by proteases, whereas the transmembrane domain (residues 25 to 52) is mostly hydrophobic, protease resistant and stabilizes the pentamer.

---

Molecular Weight: 6109

---

Gene ID: 5350

---

NCBI Accession: [NP\\_002658](#)

---

UniProt: [P26678](#)

---

Pathways: [Negative Regulation of Transporter Activity](#)

## Application Details

---

---

Application Notes: WB: 1:1000. DB: 1:500

---

Restrictions: For Research Use only

## Handling

---

---

Format: Liquid

---

Buffer: Purified polyclonal antibody supplied in PBS with 0.09 % (W/V) sodium azide.

---

Preservative: Sodium azide

---

Precaution of Use: This product contains Sodium azide: a POISONOUS AND HAZARDOUS SUBSTANCE which should be handled by trained staff only.

---

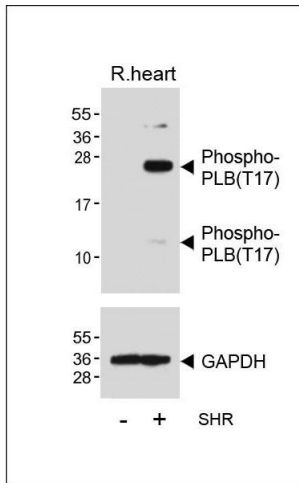
Storage: 4 °C, -20 °C

---

Storage Comment: Maintain refrigerated at 2-8 °C for up to 6 months. For long term storage store at -20 °C in small aliquots to prevent freeze-thaw cycles.

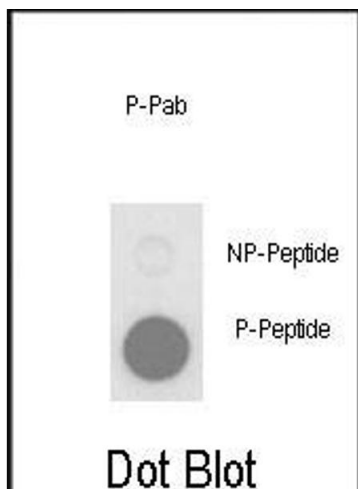
---

Expiry Date: 6 months



### Western Blotting

**Image 1.** Western blot analysis of lysates from Rat heart tissue and spontaneous hypertensive (SHR) rat heart tissue lysate, using Phospho-PLB(T17) Antibody (ABIN650834 and ABIN2839801) (upper) or GAPDH (lower).



### Dot Blot

**Image 2.** Dot blot analysis of anti-Phospho-PLB-T17 Phospho-specific Pab (ABIN650834 and ABIN2839801) on nitrocellulose membrane. 50 ng of Phospho-peptide or Non Phospho-peptide per dot were adsorbed. Antibody working concentrations are 0.5 µg per ml.