



[Go to Product page](#)

Datasheet for ABIN650858

## anti-EPH Receptor A2 antibody (pSer897)

### 2 Images

#### Overview

Quantity:	400 µL
Target:	EPH Receptor A2 (EPHA2)
Binding Specificity:	pSer897
Reactivity:	Human
Host:	Rabbit
Clonality:	Polyclonal
Conjugate:	This EPH Receptor A2 antibody is un-conjugated
Application:	Western Blotting (WB), Dot Blot (DB)

#### Product Details

Immunogen:	This EphA2 Antibody is generated from rabbits immunized with a KLH conjugated synthetic phosphopeptide corresponding to amino acid residues surrounding S897 of human EphA2.
Clone:	RB21717
Isotype:	Ig Fraction
Predicted Reactivity:	Pr, M
Purification:	This antibody is purified through a protein A column, followed by peptide affinity purification.

#### Target Details

Target:	EPH Receptor A2 (EPHA2)
Alternative Name:	EphA2 ( <a href="#">EPHA2 Products</a> )

## Target Details

---

Background:	EphA2 belongs to the ephrin receptor subfamily of the protein-tyrosine kinase family. EPH and EPH-related receptors have been implicated in mediating developmental events, particularly in the nervous system. Receptors in the EPH subfamily typically have a single kinase domain and an extracellular region containing a Cys-rich domain and 2 fibronectin type III repeats. The ephrin receptors are divided into 2 groups based on the similarity of their extracellular domain sequences and their affinities for binding ephrin-A and ephrin-B ligands. This gene encodes a protein that binds ephrin-A ligands.
Molecular Weight:	108266
Gene ID:	1969
NCBI Accession:	<a href="#">NP_004422</a>
UniProt:	<a href="#">P29317</a>
Pathways:	<a href="#">RTK Signaling</a>

## Application Details

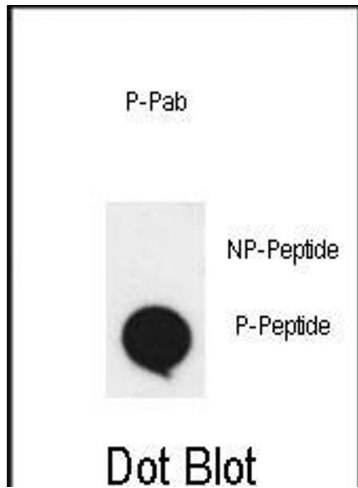
---

Application Notes:	WB: 1:1000. DB: 1:500
Restrictions:	For Research Use only

## Handling

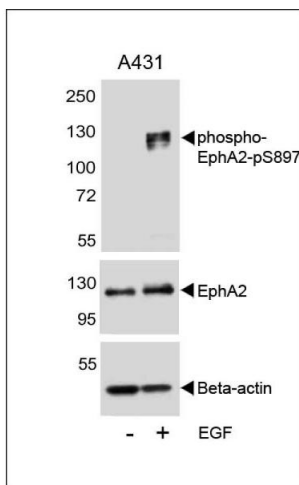
---

Format:	Liquid
Buffer:	Purified polyclonal antibody supplied in PBS with 0.09 % (W/V) sodium azide.
Preservative:	Sodium azide
Precaution of Use:	This product contains Sodium azide: a POISONOUS AND HAZARDOUS SUBSTANCE which should be handled by trained staff only.
Storage:	4 °C,-20 °C
Storage Comment:	Maintain refrigerated at 2-8 °C for up to 6 months. For long term storage store at -20 °C in small aliquots to prevent freeze-thaw cycles.
Expiry Date:	6 months



### Dot Blot

**Image 1.** Dot blot analysis of anti-phospho-EphA2-p Phospho-specific Pab (ABIN650858 and ABIN2839809) on nitrocellulose membrane. 50 ng of Phospho-peptide or Non Phospho-peptide per dot were adsorbed. Antibody working concentrations are 0.5 µg per ml.



### Western Blotting

**Image 2.** Western blot analysis of lysates from A431 cell line, untreated or treated with EGF, 100 ng/mL, using phospho-EphA2-p A (upper), EphA2 (middle) or Beta-actin (lower).