

Datasheet for ABIN650877  
**anti-ATG3 antibody (AA 90-104)**



[Go to Product page](#)

1 Image

## Overview

Quantity:	400 µL
Target:	ATG3
Binding Specificity:	AA 90-104
Reactivity:	Human
Host:	Rabbit
Clonality:	Polyclonal
Conjugate:	This ATG3 antibody is un-conjugated
Application:	Dot Blot (DB)

## Product Details

Immunogen:	This APG3-cleaved Antibody is generated from rabbits immunized with a KLH conjugated synthetic peptide 90-104aa selected from human APG3.
Clone:	RB18431
Isotype:	Ig Fraction
Predicted Reactivity:	B, Zf, M, Rat
Purification:	This antibody is purified through a protein A column, followed by peptide affinity purification.

## Target Details

Target:	ATG3
Alternative Name:	APG3 ( <a href="#">ATG3 Products</a> )

## Target Details

---

Molecular Weight:	35864
Gene ID:	64422
NCBI Accession:	<a href="#">NP_001265641</a> , <a href="#">NP_071933</a>
UniProt:	<a href="#">Q9NT62</a>
Pathways:	<a href="#">Autophagy</a>

## Application Details

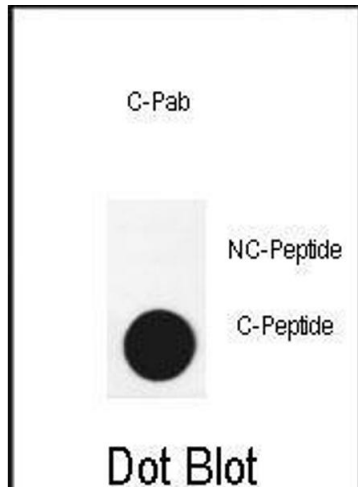
---

Application Notes:	DB: 1:500
Restrictions:	For Research Use only

## Handling

---

Format:	Liquid
Buffer:	Purified polyclonal antibody supplied in PBS with 0.09 % (W/V) sodium azide.
Preservative:	Sodium azide
Precaution of Use:	This product contains Sodium azide: a POISONOUS AND HAZARDOUS SUBSTANCE which should be handled by trained staff only.
Storage:	4 °C, -20 °C
Storage Comment:	Maintain refrigerated at 2-8 °C for up to 6 months. For long term storage store at -20 °C in small aliquots to prevent freeze-thaw cycles.
Expiry Date:	6 months



#### Dot Blot

**Image 1.** Dot blot analysis of anti-G3-cleaved Pab 3740a on nitrocellulose membrane. 50 ng of Cleaved-peptide or Non Cleaved-peptide per dot were adsorbed. Antibody working concentrations are 0.6  $\mu\text{g}$  per ml.