



[Go to Product page](#)

Datasheet for ABIN650883

## anti-Nephrin antibody (pTyr1193)

### 1 Image

#### Overview

Quantity:	400 µL
Target:	Nephrin (NPHS1)
Binding Specificity:	pTyr1193
Reactivity:	Human
Host:	Rabbit
Clonality:	Polyclonal
Conjugate:	This Nephrin antibody is un-conjugated
Application:	Dot Blot (DB)

#### Product Details

Immunogen:	This Nephrin Antibody is generated from rabbits immunized with a KLH conjugated synthetic phosphopeptide corresponding to amino acid residues surrounding Y1193 of human Nephrin.
Clone:	RB28261
Isotype:	Ig Fraction
Purification:	This antibody is purified through a protein A column, followed by peptide affinity purification.

#### Target Details

Target:	Nephrin (NPHS1)
Alternative Name:	Nephrin ( <a href="#">NPHS1 Products</a> )
Background:	This gene encodes a member of the immunoglobulin family of cell adhesion molecules that

## Target Details

---

functions in the glomerular filtration barrier in the kidney. The gene is primarily expressed in renal tissues, and the protein is a type-1 transmembrane protein found at the slit diaphragm of glomerular podocytes. The slit diaphragm is thought to function as an ultrafilter to exclude albumin and other plasma macromolecules in the formation of urine. Mutations in this gene result in Finnish-type congenital nephrosis 1, characterized by severe proteinuria and loss of the slit diaphragm and foot processes.

Molecular Weight:	134742
Gene ID:	4868
NCBI Accession:	<a href="#">NP_004637</a>
UniProt:	<a href="#">O60500</a>
Pathways:	<a href="#">Regulation of Actin Filament Polymerization</a> , <a href="#">Skeletal Muscle Fiber Development</a>

## Application Details

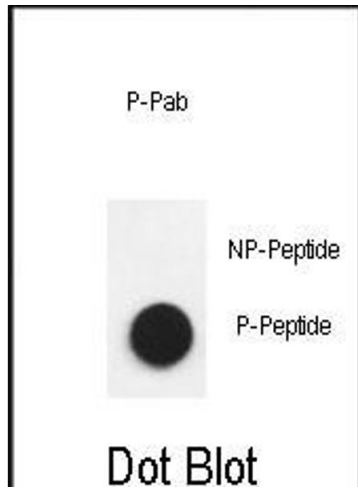
---

Application Notes:	DB: 1:500
Restrictions:	For Research Use only

## Handling

---

Format:	Liquid
Buffer:	Purified polyclonal antibody supplied in PBS with 0.09 % (W/V) sodium azide.
Preservative:	Sodium azide
Precaution of Use:	This product contains Sodium azide: a POISONOUS AND HAZARDOUS SUBSTANCE which should be handled by trained staff only.
Storage:	4 °C,-20 °C
Storage Comment:	Maintain refrigerated at 2-8 °C for up to 6 months. For long term storage store at -20 °C in small aliquots to prevent freeze-thaw cycles.
Expiry Date:	6 months



#### Dot Blot

**Image 1.** Dot blot analysis of anti-Phospho-Nephrin antibody Phospho-specific Pab (ABIN650883 and ABIN2839826) on nitrocellulose membrane. 50 ng of Phospho-peptide or Non Phospho-peptide per dot were adsorbed. Antibody working concentrations are 0.6 µg per ml.