

Datasheet for ABIN650886  
**anti-NFkB antibody (pSer536)**[Go to Product page](#)

## 1 Image

## Overview

Quantity:	400 µL
Target:	NFkB
Binding Specificity:	pSer536
Reactivity:	Human
Host:	Rabbit
Clonality:	Polyclonal
Conjugate:	This NFkB antibody is un-conjugated
Application:	Dot Blot (DB)

## Product Details

Immunogen:	This NF kappa B Antibody is generated from rabbits immunized with a KLH conjugated synthetic phosphopeptide corresponding to amino acid residues surrounding S536 of human NF kappa B.
Clone:	RB22552
Isotype:	Ig Fraction
Predicted Reactivity:	M
Purification:	This antibody is purified through a protein A column, followed by peptide affinity purification.

## Target Details

Target:	NFkB
---------	------

## Target Details

Alternative Name:	NF kappa B ( <a href="#">NFkB Products</a> )
Background:	NFKB1 (MIM 164011) or NFKB2 (MIM 164012) is bound to REL (MIM 164910), RELA, or RELB (MIM 604758) to form the NFKB complex. The p50 (NFKB1)/p65 (RELA) heterodimer is the most abundant form of NFKB. The NFKB complex is inhibited by I-kappa-B proteins (NFKBIA, MIM 164008 or NFKBIB, MIM 604495), which inactivate NFKB by trapping it in the cytoplasm. Phosphorylation of serine residues on the I-kappa-B proteins by kinases (IKBKA, MIM 600664, or IKBKB, MIM 603258) marks them for destruction via the ubiquitination pathway, thereby allowing activation of the NFKB complex. Activated NFKB complex translocates into the nucleus and binds DNA at kappa-B-binding motifs such as 5-prime GGGRNNYYCC 3-prime or 5-prime HGGARNYYCC 3-prime (where H is A, C, or T, R is an A or G purine, and Y is a C or T pyrimidine).
Molecular Weight:	60219
Gene ID:	5970
NCBI Accession:	<a href="#">NP_001138610</a> , <a href="#">NP_001230913</a> , <a href="#">NP_068810</a>
UniProt:	<a href="#">Q04206</a>
Pathways:	<a href="#">Ubiquitin Proteasome Pathway</a> , <a href="#">S100 Proteins</a>

## Application Details

Application Notes:	DB: 1:500
Restrictions:	For Research Use only

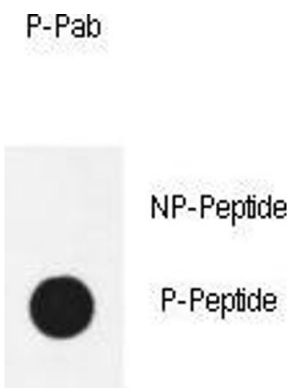
## Handling

Format:	Liquid
Buffer:	Purified polyclonal antibody supplied in PBS with 0.09 % (W/V) sodium azide.
Preservative:	Sodium azide
Precaution of Use:	This product contains Sodium azide: a POISONOUS AND HAZARDOUS SUBSTANCE which should be handled by trained staff only.
Storage:	4 °C, -20 °C
Storage Comment:	Maintain refrigerated at 2-8 °C for up to 6 months. For long term storage store at -20 °C in small aliquots to prevent freeze-thaw cycles.

Handling

Expiry Date: 6 months

Images



Dot Blot

**Image 1.** Dot blot analysis of anti-Phospho-NF kappa B-Phospho-specific Pab (ABIN650886 and ABIN2839828) on nitrocellulose membrane. 50 ng of Phospho-peptide or Non Phospho-peptide per dot were adsorbed. Antibody working concentrations are 0.6 µg per ml.

Dot Blot